

PC390LC-11/PC390LCi-11

Hydraulic excavator



Innovation



Performance



Efficiency



Improve your efficiency – less time required to complete excavation to finish grade with intelligent Machine Control.

Net horsepower

257 HP / 192 kW @ 1,950 rpm

Operating weight

87,867–90,441 lbs. / 39,856–41,023 kg

Bucket capacity

0.89–2.91 yd³ / 0.68–2.22 m³



PC390LC-11/PC390LCi-11

Engine*

Model	Komatsu SAA6D114E-6*		
Type	Water-cooled, 4-cycle, direct injection		
Aspiration	Variable Geometry Turbocharger with air-to-air aftercooler and EGR		
Number of cylinders	6		
Bore x stroke	114 mm x 144.5 mm 4.49" x 5.69"		
Piston displacement	8.85 L 540 in ³		
Horsepower			
SAE J1995	Gross	202 kW	271 HP
ISO 9249 / SAE J1349	Net	192 kW	257 HP
	Rated rpm	1,950	
Fan drive method for radiator cooling	Mechanical		
Governor	All-speed control, electronic		

*EPA Tier 4 Final emissions certified

Hydraulics

Type	HydrauMind (Hydraulic Mechanical Intelligence) system, closed-center system with load sensing valve and pressure compensated valves		
Number of selectable working modes	6		
Main pump			
Type	Variable displacement axial piston type		
Pumps for	Boom, arm, bucket, swing, and travel circuits		
Maximum flow	535 L/min	141.3 gal/min	
Supply for control circuit	Self-reducing valve		

Hydraulic motors

Travel	2 x axial piston motors with parking brake		
Swing	1 x axial piston motor with swing holding brake		

Relief valve setting

Implement circuits	37.3 MPa	380 kg/cm ²	5,400 psi
Travel circuit	37.3 MPa	380 kg/cm ²	5,400 psi
Swing circuit	27.9 MPa	285 kg/cm ²	4,050 psi
Pilot circuit	3.2 MPa	33 kg/cm ²	470 psi

Hydraulic cylinders

(Number of cylinders – bore x stroke x rod diameter)

Boom	2–140 mm x 1480 mm x 100 mm	5.5" x 58.3" x 3.9"
Arm	1–160 mm x 1825 mm x 110 mm	6.3" x 71.9" x 4.3"
Bucket for 3.2 m 10'5" and 4.0 m 13'2" arms	1–140 mm x 1285 mm x 100 mm	5.5" x 50.6" x 3.9"
Bucket for 2.54 m 8'4" arm	1–150 mm x 1285 mm x 100 mm	5.9" x 50.6" x 4.3"

Drives and brakes

Steering control	Two levers with pedals		
Drive method	Hydrostatic		
Maximum drawbar pull	329 kN	33,510 kg	73,880 lbs.
Gradeability	70%, 35°		
Maximum travel speed			
	High	4.3 km/h	2.7 mph
	Mid	3.5 km/h	2.2 mph
	Low	2.8 km/h	1.7 mph
Service brake	Hydraulic lock		
Parking brake	Mechanical disc brake		

Swing system

Drive method	Hydraulic motor	
Swing reduction	Planetary gear	
Swing circle lubrication	Grease-bathed	
Service brake	Hydraulic lock	
Holding brake/Swing lock	Mechanical disc brake	
Swing speed	9.5 rpm	
Swing torque	11,386 kg•m	82,313 ft. lbs.

Undercarriage

Center frame	X-frame	
Track frame	Box-section	
Track type	Sealed	
Track adjuster	Hydraulic	
Number of shoes (each side)	49	
Number of carrier rollers (each side)	2	
Number of track rollers (each side)	8	

Coolant and lubricant capacity (refilling)

Fuel tank	605 L	159.8 U.S. gal
Radiator	37 L	9.7 U.S. gal
Engine	39 L	10.2 U.S. gal
Final drive, each side	10.5 L	2.8 U.S. gal
Swing drive	14 L	3.7 U.S. gal
Hydraulic tank	188 L	49.7 U.S. gal
Diesel Exhaust Fluid (DEF) tank	39 L	10.3 U.S. gal

Sound performance

Exterior – ISO 6395	103 dB(A)
Operator – ISO 6396	71dB(A)

Operating weight (approximate)*

Operating weight includes 6,500 mm 21'3" one-piece HD boom, 3,185 mm 10'5" arm, SAE heaped 1.96 m³ 2.56 yd³ bucket, rated capacity of lubricants, coolant, full fuel tank, operator, and standard equipment.

Triple-grouser shoes	Operating weight	Ground pressure ISO 16754
700 mm 28"	39,856 kg 87,867 lbs.	0.61 kg/cm ² 8.61 psi
800 mm 31.5"	40,359 kg 88,976 lbs.	0.54 kg/cm ² 7.63 psi
900 mm 35.5"	40,796 kg 89,940 lbs.	0.48 kg/cm ² 6.86 psi

*See equipment page for option availability.

Component weights

Arm including bucket cylinder and linkage

3,185 mm 10'5" arm assembly	1,761 kg	3,882 lbs.
4,020 mm 13'2" arm assembly	1,988 kg	4,383 lbs.

One piece HD boom including arm cylinder

6,500 mm 21'3" boom assembly	3,135 kg	6,912 lbs.
------------------------------	----------	------------

Boom cylinders x 2

	259 kg	571 lbs.
--	--------	----------

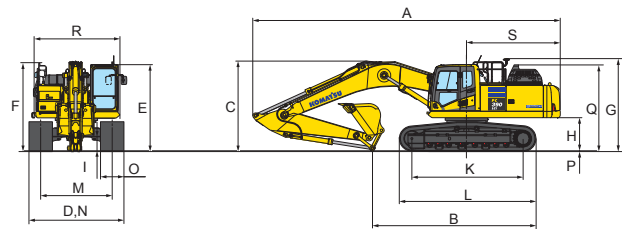
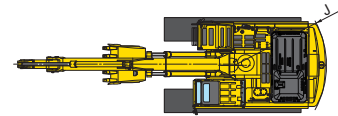
Counterweight

	6,920 kg	15,255 lbs.
--	----------	-------------

Dimensions

Arm Length	3,185 mm	10'5"	4,020 mm	13'2"
A Overall length	11,170 mm	36'8"	11230 mm	36'10"
B Length on ground (transport)	7,530 mm	24'8"	5515 mm	18'1"
C Overall height (to top of boom)*	3,420 mm	11'3"	3690 mm	12'1"
D Overall width	3,640 mm	11'11"		
E Overall height (to top of cab)*	3,262 mm	10'8"		
F Overall height (to top of handrail)*	3,363 mm	11'0"		
G Overall height (to top of GNSS antenna)*	3,420 mm	11'3"		
H Ground clearance, counterweight	1,320 mm	4'4"		
I Ground clearance, minimum	551 mm	1'10"		
J Tail swing radius	3,445 mm	11'4"		
K Track length on ground	4,350 mm	14'3"		
L Track length	5,357 mm	17'7"		
M Track gauge	2,740 mm	9'0"		
N Width of crawler	700 mm 28" shoe	3,440 mm	11'2"	
	800 mm 31.5" shoe	3,540 mm	11'6"	
	850 mm 33.5" shoe	3,640 mm	11'11"	
O Shoe width	900 mm	35.5"		
P Grouser height	37 mm	1.5"		
Q Machine height to top of engine cover	3,135 mm	10'3"		
R Machine upper width**	3,145 mm	10'4"		
S Distance, swing center to rear end	3,405 mm	11'2"		

*Including grouser height **Including handrail



Backhoe bucket, arm and boom combination

Bucket type	Bucket								6.5 m (21'3") Boom		
	Capacity		Teeth	Width		Weight		Tip radius		3.2 m (10'5")	4.0 m (13'2")
Komatsu TL	0.93 m ³	1.21 yd ³	4	762 mm	30"	1,097 kg	2,418 lbs.	1674 mm	65.9"	●	●
	1.18 m ³	1.54 yd ³	4	914 mm	36"	1,198 kg	2,641 lbs.	1674 mm	65.9"	●	●
	1.44 m ³	1.88 yd ³	5	1,067 mm	42"	1,325 kg	2,921 lbs.	1674 mm	65.9"	●	●
	1.70 m ³	2.22 yd ³	5	1,219 mm	48"	1,426 kg	3,144 lbs.	1674 mm	65.9"	●	○
	1.96 m ³	2.56 yd ³	6	1,372 mm	54"	1,554 kg	3,425 lbs.	1674 mm	65.9"	○	□
Komatsu HP	0.68 m ³	0.89 yd ³	3	610 mm	24"	1,022 kg	2,254 lbs.	1674 mm	65.9"	●	●
	0.93 m ³	1.21 yd ³	4	762 mm	30"	1,178 kg	2,598 lbs.	1674 mm	65.9"	●	●
	1.18 m ³	1.54 yd ³	4	914 mm	36"	1,358 kg	2,993 lbs.	1674 mm	65.9"	●	●
	1.44 m ³	1.88 yd ³	5	1,067 mm	42"	1,439 kg	3,173 lbs.	1674 mm	65.9"	●	●
	1.70 m ³	2.22 yd ³	5	1,219 mm	48"	1,555 kg	3,429 lbs.	1674 mm	65.9"	●	□
Komatsu HPS	1.96 m ³	2.56 yd ³	6	1,372 mm	54"	1,701 kg	3,750 lbs.	1674 mm	65.9"	□	○
	2.22 m ³	2.91 yd ³	6	1,524 mm	60"	1,554 kg	3,425 lbs.	1674 mm	65.9"	○	X
	0.68 m ³	0.89 yd ³	3	610 mm	24"	1,112 kg	2,451 lbs.	1674 mm	65.9"	●	●
	0.93 m ³	1.21 yd ³	4	762 mm	30"	1,294 kg	2,853 lbs.	1674 mm	65.9"	●	●
	1.18 m ³	1.54 yd ³	4	914 mm	36"	1,437 kg	3,167 lbs.	1674 mm	65.9"	●	●
Komatsu HPX	1.44 m ³	1.88 yd ³	5	1,067 mm	42"	1,607 kg	3,543 lbs.	1674 mm	65.9"	●	○
	1.70 m ³	2.22 yd ³	5	1,219 mm	48"	1,750 kg	3,857 lbs.	1674 mm	65.9"	○	□
	1.96 m ³	2.56 yd ³	6	1,372 mm	54"	1,921 kg	4,236 lbs.	1674 mm	65.9"	□	○
	2.22 m ³	2.91 yd ³	6	1,524 mm	60"	1,554 kg	3,425 lbs.	1674 mm	65.9"	○	X
	0.68 m ³	0.89 yd ³	3	610 mm	24"	1,239 kg	2,731 lbs.	1674 mm	65.9"	●	●
Komatsu HPX	0.93 m ³	1.21 yd ³	4	762 mm	30"	1,421 kg	3,133 lbs.	1674 mm	65.9"	●	●
	1.18 m ³	1.54 yd ³	4	914 mm	36"	1,564 kg	3,447 lbs.	1674 mm	65.9"	●	●
	1.44 m ³	1.88 yd ³	5	1,067 mm	42"	1,734 kg	3,823 lbs.	1674 mm	65.9"	●	○
	1.70 m ³	2.22 yd ³	5	1,219 mm	48"	1,877 kg	4,137 lbs.	1674 mm	65.9"	○	□
	1.96 m ³	2.56 yd ³	6	1,372 mm	54"	2,048 kg	4,516 lbs.	1674 mm	65.9"	□	○
2.22 m ³	2.91 yd ³	6	1,524 mm	60"	1,554 kg	3,425 lbs.	1674 mm	65.9"	○	X	

For best semi-automatic machine control performance, observe maximum attachment weights:

- 2,500 kg 5,511 lbs. maximum for 3,185 mm 10' 5" standard arm assembly
- 2,350 kg 5,180 lbs. maximum for 4,020 mm 13' 2" standard arm assembly

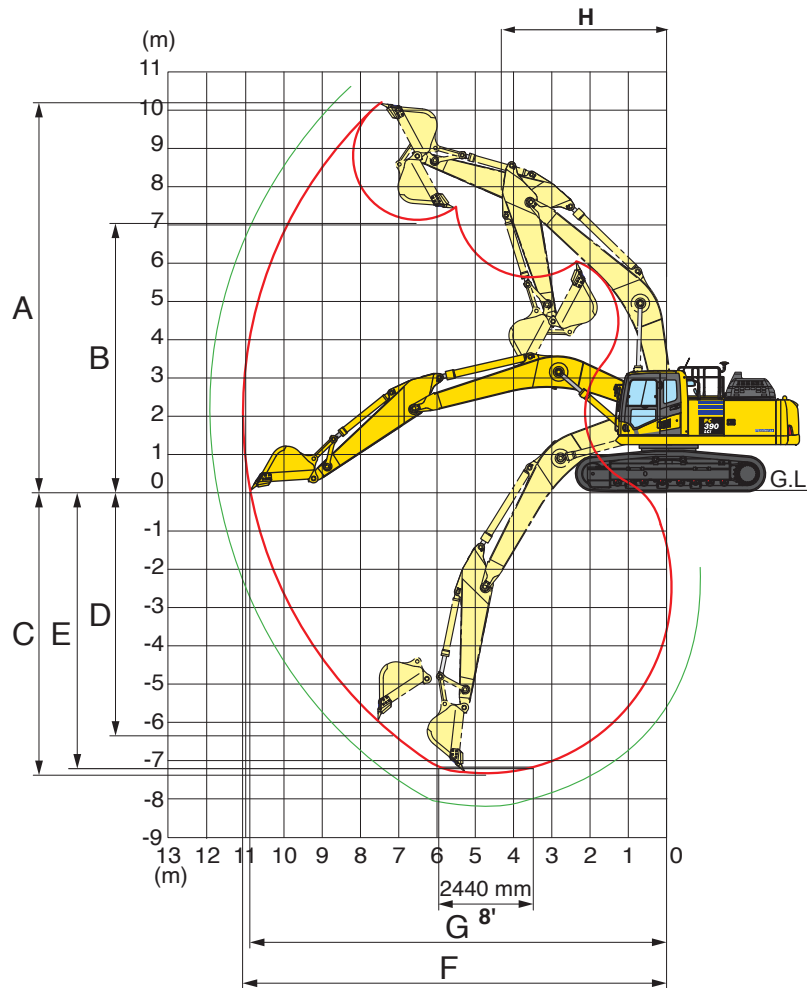
Exceeding recommended attachment weights may negatively impact performance and accuracy of semi-automatic function.

- - Used with material weights up to 3,500 lbs./yd³ - Quarry/rock/high abrasion applications
- - Used with material weights up to 2,000 lbs./yd³ - Light materials applications
- - Used with material weights up to 2,500 lbs./yd³ - General construction
- X - Not useable
- - Used with material weights up to 3,000 lbs./yd³ - Tough digging applications

Komatsu recommends the use of buckets sized to machine capacity. Buckets listed in the table above are sized appropriate to the specified material densities. Buckets exceeding recommended sizes may result in reduced performance.

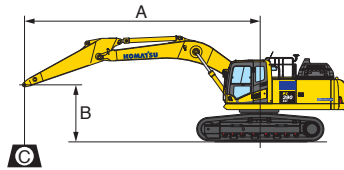
PC390LC-11/PC390LCi-11

Working range



	Arm Length	3,185 mm	10'5"	4,020 mm	13'2"
A	Max. digging height	10,260 mm	33'7"	10,660 mm	35'0"
B	Max. dumping height	7,155 mm	23'6"	7,600 mm	24'11"
C	Max. digging depth	7,265 mm	23'10"	8,100 mm	26'7"
D	Max. vertical wall digging depth	6,235 mm	20'6"	7,145 mm	23'5"
E	Max. digging depth for 8' level bottom	7,100 mm	23'3"	7,975 mm	26'2"
F	Max. digging reach	11,100 mm	36'5"	11,895 mm	39'0"
G	Max. digging reach at ground level	10,870 mm	35'8"	11,705 mm	38'5"
H	Min. swing radius	4,310 mm	14'2"	4,320 mm	14'2"
SAE rating	Bucket digging force at power max.	200 kN 20,400 kg / 44,970 lbs.		200 kN 20,400 kg / 44,970 lbs.	
	Arm crowd force at power max.	165 kN 16,800 kg / 37,040 lbs.		139 kN 14,200 kg / 31,310 lbs.	
ISO rating	Bucket digging force at power max.	228 kN 23,200 kg / 51,150 lbs.		227 kN 23,100 kg / 50,930 lbs.	
	Arm crowd force at power max.	171 kN 17,400 kg / 38,360 lbs.		144 kN 14,700 kg / 32,410 lbs.	

Lifting capacity with lifting mode

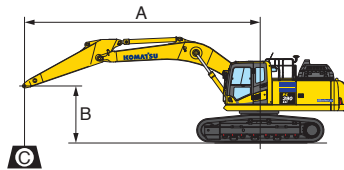


- A: Reach from swing center
- B: Bucket hook height
- C: Lifting capacity
- Cf: Rating over front
- Cs: Rating over side
- ☉: Rating at maximum reach

Conditions:

- Boom length: 6,500 mm 21' 3" one-piece boom
- Bucket: None
- Lifting mode: On

Arm: 3,185 mm 10'5"		Shoes: 800 mm 31.5"										Unit: kg lbs.	
		3.0 m 10'		4.6 m 15'		6.1 m 20'		7.6 m 25'		9.1 m 30'		MAX	
B		Cf	Cs	Cf	Cs	Cf	Cs	Cf	Cs	Cf	Cs	Cf	Cs
7.6 m												* 7200	* 7200
25'												* 15900	* 15900
6.1 m							* 8900	8800				* 7000	* 7000
20'							* 19650	19450				* 15500	* 15500
4.6 m					* 10800	* 10800	* 9400	8650				* 7100	6650
15'					* 23850	* 23850	* 20750	19050				* 15650	14750
3.0 m			* 16350	* 16350	* 12150	11400	* 10050	8400	* 8800	6500	* 7400	6300	
10'			* 36150	* 36150	* 26850	25200	* 22200	18550	* 19450	14400	* 16300	13900	
1.5 m			* 18250	16350	* 13250	11000	* 10650	8150	* 9000	6400	* 7950	6200	
5'			* 40250	36150	* 29250	24300	* 23450	18050	* 19850	14150	* 17550	13650	
0 m			* 18500	16050	* 13750	10750	* 10900	8000	* 8900	6350	* 8850	6300	
0'			* 40800	35350	* 30300	23700	* 24000	17700	* 19600	14000	* 19550	13950	
-1.5 m	* 14150	* 14150	* 17600	15950	* 13400	10650	* 10550	7950				* 8900	6750
-5'	* 31250	* 31250	* 38850	35250	* 29600	23450	* 23350	17550				* 19700	14950
-3.0 m	* 20250	* 20250	* 15650	* 15650	* 12200	10700	* 9250	8000				* 8850	7750
-10'	* 44700	* 44700	* 34550	* 34550	* 26900	23600	* 20500	17650				* 19500	17050
-4.6 m	* 15250	* 15250	* 12250	* 12250	* 9300	* 9300						* 8250	* 8250
-15'	* 33600	* 33600	* 27000	* 27000	* 20500	* 20500						* 18250	* 18250



- A: Reach from swing center
- B: Bucket hook height
- C: Lifting capacity
- Cf: Rating over front
- Cs: Rating over side
- ☉: Rating at maximum reach

Conditions:

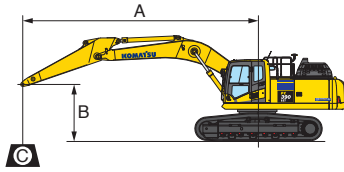
- Boom length: 6,500 mm 21' 3" one-piece boom
- Bucket: None
- Lifting mode: On

Arm: 3,185 mm 10'5"		Shoes: 900 mm 35.5"										Unit: kg lbs.	
		3.0 m 10'		4.6 m 15'		6.1 m 20'		7.6 m 25'		9.1 m 30'		MAX ☉	
B		Cf	Cs	Cf	Cs	Cf	Cs	Cf	Cs	Cf	Cs	Cf	Cs
7.6 m												* 7200	* 7200
25'												* 15900	* 15900
6.1 m							* 8900	8900				* 7000	* 7000
20'							* 19650	19600				* 15500	* 15500
4.6 m					* 10800	* 10800	* 9400	8700				* 7100	6750
15'					* 23850	* 23850	* 20750	19250				* 15650	14900
3.0 m			* 16350	* 16350	* 12150	11550	* 10050	8500	* 8800	6600	* 7400	6350	
10'			* 36150	* 36150	* 26850	25450	* 22200	18700	* 19450	14550	* 16300	14050	
1.5 m			* 18250	16550	* 13250	11100	* 10650	8250	* 9000	6450	* 7950	6250	
5'			* 40250	36500	* 29250	24550	* 23450	18200	* 19850	14300	* 17550	13800	
0 m			* 18500	16200	* 13750	10850	* 10900	8100	* 8900	6400	* 8850	6400	
0'			* 40800	35750	* 30300	23950	* 24000	17850	* 19600	14150	* 19550	14100	
-1.5 m	* 14150	* 14150	* 17600	16150	* 13400	10750	* 10550	8000				* 8900	6850
-5'	* 31250	* 31250	* 38850	35600	* 29600	23700	* 23350	17700				* 19700	15100
-3.0 m	* 20250	* 20250	* 15650	* 15650	* 12200	10800	* 9250	8100				* 8850	7800
-10'	* 44700	* 44700	* 34550	* 34550	* 26900	23850	* 20500	17850				* 19500	17250
-4.6 m	* 15250	* 15250	* 12250	* 12250	* 9300	* 9300						* 8250	8250
-15'	* 33600	* 33600	* 27000	* 27000	* 20500	* 20500						* 18250	18250

*Asterisk indicates load is limited by hydraulic capacity rather than tipping. Ratings are based on ISO standard No. 10567. Rated load capacity does not exceed 87% of hydraulic lift capacity or 75% of tipping load. Total weight of bucket and/or installed attachments must be deducted from the capacities shown above. Lift capacity chart is based on machine located on a solid, level and uniform surface. Load ratings are at the arm bucket pin location, use of any attachment point in a different location to handle objects could affect excavator lift performance.

PC390LC-11/PC390LCi-11

Lifting capacity with lifting mode

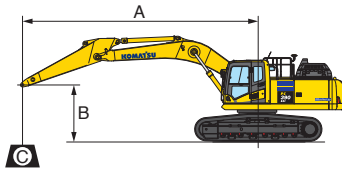


- A: Reach from swing center
- B: Bucket hook height
- C: Lifting capacity
- Cf: Rating over front
- Cs: Rating over side
- ⊗: Rating at maximum reach

- Conditions:
- Boom length: 6,500 mm 21' 3" one-piece boom
 - Bucket: None
 - Lifting mode: On

Arm: 4,020 mm 13'2" Shoes: 800 mm 31.5" Unit: kg lbs.

B	A 3.0 m 10'		4.6 m 15'		6.1 m 20'		7.6 m 25'		9.1 m 30'		MAX ⊗	
	Cf	Cs	Cf	Cs	Cf	Cs	Cf	Cs	Cf	Cs	Cf	Cs
7.6 m 25'											* 5600	* 5600
											* 12350	* 12350
6.1 m 20'							* 7900	* 7900	* 6700	6650	* 5450	* 5450
							* 17500	* 17500	* 14850	14700	* 12050	* 12050
4.6 m 15'							* 8500	* 8500	* 7800	6600	* 5500	* 5500
							* 18750	* 18750	* 17300	14550	* 12100	* 12100
3.0 m 10'			* 14450	* 14450	* 11050	* 11050	* 9250	8350	* 8200	6450	* 5650	5500
			* 31850	* 31850	* 24350	* 24350	* 20450	18400	* 18050	14200	* 12500	12100
1.5 m 5'			* 16900	16350	* 12350	10900	* 10000	8050	* 8500	6250	* 6000	5350
			* 37250	36050	* 27250	24050	* 22000	17750	* 18800	13850	* 13200	11850
0 m 0'	* 8550	* 8550	* 17950	15700	* 13200	10550	* 10450	7800	* 8700	6150	* 6550	5450
	* 18900	* 18900	* 39650	34650	* 29150	23300	* 23050	17250	* 19200	13550	* 14400	12050
-1.5 m -5'	* 12750	* 12750	* 17800	15450	* 13300	10300	* 10500	7650	* 8500	6100	* 7400	5750
	* 28150	* 28150	* 39250	34150	* 29350	22800	* 23150	16950	* 18700	13450	* 16350	12750
-3.0 m -10'	* 18300	* 18300	* 16500	15500	* 12600	10300	* 9850	7650			* 7950	6400
	* 40350	* 40350	* 36450	34200	* 27800	22750	* 21750	16900			* 17600	14150
-4.6 m -15'	* 18650	* 18650	* 14000	14000	* 10750	10400	* 7900	7800			* 7750	7750
	* 41150	* 41150	* 30900	30900	* 23750	22950	* 17400	17250			* 17100	17100



- A: Reach from swing center
- B: Bucket hook height
- C: Lifting capacity
- Cf: Rating over front
- Cs: Rating over side
- ⊗: Rating at maximum reach

- Conditions:
- Boom length: 6,500 mm 21' 3" one-piece boom
 - Bucket: None
 - Lifting mode: On

Arm: 4,020 mm 13'2" Shoes: 800 mm 31.5" Unit: kg lbs.

B	A 3.0 m 10'		4.6 m 15'		6.1 m 20'		7.6 m 25'		9.1 m 30'		MAX ⊗	
	Cf	Cs	Cf	Cs	Cf	Cs	Cf	Cs	Cf	Cs	Cf	Cs
7.6 m 25'											* 5600	* 5600
											* 12350	* 12350
6.1 m 20'							* 7900	* 7900	* 6700	6650	* 5450	* 5450
							* 17500	* 17500	* 14850	14700	* 12050	* 12050
4.6 m 15'							* 8500	* 8500	* 7800	6600	* 5500	* 5500
							* 18750	* 18750	* 17300	14550	* 12100	* 12100
3.0 m 10'			* 14450	* 14450	* 11050	* 11050	* 9250	8350	* 8200	6450	* 5650	5500
			* 31850	* 31850	* 24350	* 24350	* 20450	18400	* 18050	14200	* 12500	12100
1.5 m 5'			* 16900	16350	* 12350	10900	* 10000	8050	* 8500	6250	* 6000	5350
			* 37250	36050	* 27250	24050	* 22000	17750	* 18800	13850	* 13200	11850
0 m 0'	* 8550	* 8550	* 17950	15700	* 13200	10550	* 10450	7800	* 8700	6150	* 6550	5450
	* 18900	* 18900	* 39650	34650	* 29150	23300	* 23050	17250	* 19200	13550	* 14400	12050
-1.5 m -5'	* 12750	* 12750	* 17800	15450	* 13300	10300	* 10500	7650	* 8500	6100	* 7400	5750
	* 28150	* 28150	* 39250	34150	* 29350	22800	* 23150	16950	* 18700	13450	* 16350	12750
-3.0 m -10'	* 18300	* 18300	* 16500	15500	* 12600	10300	* 9850	7650			* 7950	6400
	* 40350	* 40350	* 36450	34200	* 27800	22750	* 21750	16900			* 17600	14150
-4.6 m -15'	* 18650	* 18650	* 14000	14000	* 10750	10400	* 7900	7800			* 7750	7750
	* 41150	* 41150	* 30900	30900	* 23750	22950	* 17400	17250			* 17100	17100

*Asterisk indicates load is limited by hydraulic capacity rather than tipping. Ratings are based on ISO standard No. 10567. Rated load capacity does not exceed 87% of hydraulic lift capacity or 75% of tipping load. Total weight of bucket and/or installed attachments must be deducted from the capacities shown above. Lift capacity chart is based on machine located on a solid, level and uniform surface. Load ratings are at the arm bucket pin location, use of any attachment point in a different location to handle objects could affect excavator lift performance.

Equipment

Cab	PC390LC	PC390LCi	Electrical system	PC390LC	PC390LCi
ROPS cab (ISO12117-2)	●	●	Batteries, large capacity (2 x 12 volt)	●	●
High back air suspension seat, with heat	●	●	Battery master disconnect switch with lockout tagout	●	●
Operator Protective Guard (OPG) Level 1 top guard	●	●	Alternator (90Amp, 24Volt)	●	●
Large LCD high resolution color monitor	●	●	Starter motor (11kW)	●	●
Automatic climate control	●	●	Secondary engine shut off switch	●	●
Retractable seat belt (76mm width) with indicator	●	●	Working lights (1 front RH side / 1 boom LH side)	●	●
Two 12V accessory outlets	●	●			
Rearview mirrors, right hand and left hand side	●	●	Booms and arms	PC390LC	PC390LCi
Rearview monitoring system (1 camera)	●	●	6500mm (21'3") HD boom assembly	●	●
Travel alarm	●	●	6500mm (21'3") HD boom assembly with +1 attach piping	○	○
Proportional joystick control levers	○	●	3185mm (10'5") arm assembly	●	●
Operator identification system	●	●	3185mm (10'5") arm assembly with +1 attach piping	○	○
Hydraulic lock lever	●	●	4020mm (13'2") arm assembly	○	○
Skylight	●	●	4020mm (13'2") arm assembly with +1 attach piping	○	-
Sunvisor	○	○	Boom foot, boom nose, and arm end steel castings	●	●
Rainvisor	○	○			
Working lights, two additional cab mounted	○	○	Undercarriage and work equipment	PC390LC	PC390LCi
Straight travel pedal	□	□	800mm (31.5") triple grouser track shoes	●	●
			900mm (35") triple grouser track shoes	○	○
Engine	PC390LC	PC390LCi	700mm (28") triple grouser track shoes	○	○
Komatsu SAA6D114E-6 Tier 4 Final	●	●	8 track / 2 carrier rollers (each side)	●	●
Dry type air cleaner, double element	●	●	Hydraulic track adjusters (each side)	●	●
Fuel pre-filter with water separator	●	●	Track guiding guards, center section (each side)	●	●
Fuel high efficiency filter	●	●	Track roller guards, full length (each side)	○	○
Automatic engine warm up system	●	●	Counterweight, 6,920kg (15,255 lb)	●	●
Programmable auto-idle shut down	●	●	Counterweight, 7,400kg (16,315 lb)**	○	-
Overheat prevention system	●	●	Object handling H-link	●	●
Turbocharger protection system	●	●	228mm (9") track pitch	●	●
Hydraulic controls	PC390LC	PC390LCi	Guards and covers	PC390LC	PC390LCi
Pattern change control valve (ISO to BH control)	●	●	Revolving frame deck guards	●	●
Working mode selection system (6 modes)	●	●	Revolving frame undercovers	●	●
Dual pump, Closed Center Load Sensing System (CLSS)	●	●	Track frame swivel guard	●	●
Auto-deceleration system	●	●	Pump / engine room partition	●	●
Power max system	●	●	Turbocharger exhaust manifold cover	●	●
Boom and arm holding valves	●	●	Dust net for radiator and hydraulic oil cooler	●	●
Two boom mode settings	●	●	Slip resistant foot plates	●	●
Boom and arm +1 attach piping	○	○	Tool free access to engine and aftertreatment	●	●
One way/two way flow hyd control unit			Left and right side hand rails	●	●
Variable pressure, return filter, & accumulator	○	-	Cab full front guard, OPG Level 1	○	○
One way/two way flow hyd control unit			Cab full front guard, OPG Level 2	○	○
Variable pressure and flow, return filter, and accumulator	-	○	Cab top guard, OPG Level 2	○	○
			Revolving frame undercovers - heavy duty	○	○
Technology	PC390LC	PC390LCi	Revolving frame undercovers - severe duty	○	○
Komtrax level 5.0	●	●			
Intelligent Machine Control	-	●	Drive and brake system	PC390LC	PC390LCi
264mm (10.4") IMC color monitor with USB	-	●	Three speed travel with auto shift	●	●
Multi-band UHF/915SS radio	-	●	Double reduction type final drive	●	●
Auto grade assist	-	●	Triple labyrinth final drive seals	●	●
Auto stop control	-	●			
Minimum distance control	-	●			
Bucket angle hold control	-	●			
Provision for auto tilt control*	-	●			
Komvision (4 camera system)	-	○□			
IMU for auto tilt control	-	□			
In field design - 2D simple surface	-	●			

*IMU for auto-tilt control required for operation

**With revolving frame reinforcements, Only available with super long fronts

For a complete list of available attachments, please contact your local Komatsu distributor.

Standard equipment	●
Optional equipment	○
Optional (field install)	□

Product designs, specifications and/or data in this document are provided for informational purposes only and are not warranties of any kind. Product designs and/or specifications may be changed at any time without notice. The only warranties that apply to sales of products and services are Komatsu's standard written warranties, which will be furnished upon request.

Komatsu and other trademarks and service marks used herein are the property of Komatsu Ltd., Komatsu America Corp., Komatsu Mining Corp., or one of their affiliates, or the respective owners or licensees.

© 2021 Komatsu America Corp. All rights reserved. EN-PC390LC-LCi-11-SP01-0621-V1

KOMATSU

[komatsuamerica.com](https://www.komatsuamerica.com)

