



# 9020XPC

Walking dragline - AC drive  
General specifications



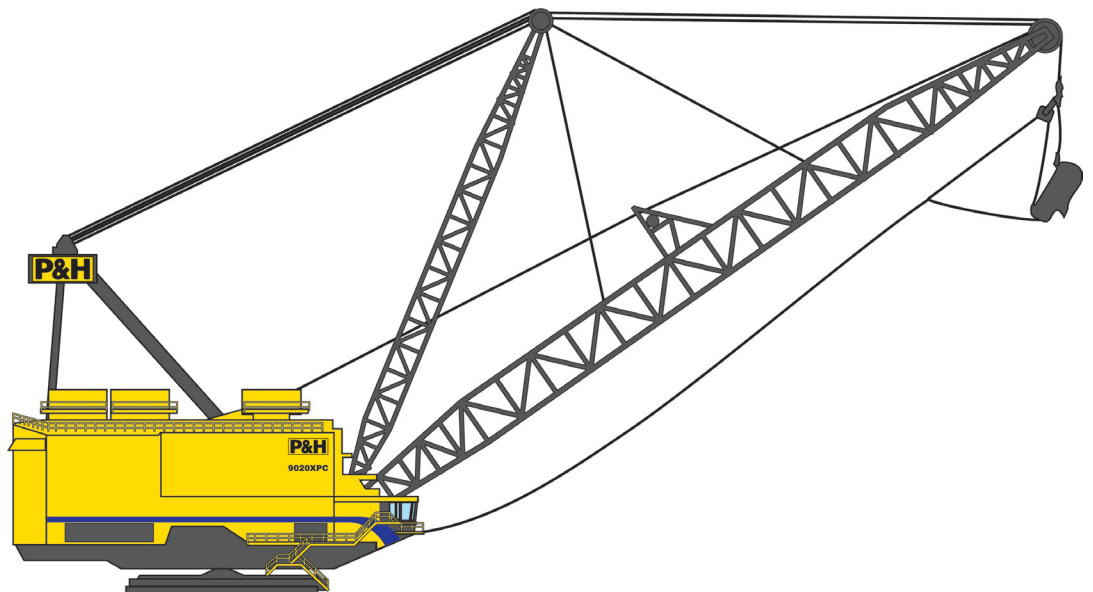
Reliability



Maintenance



Performance



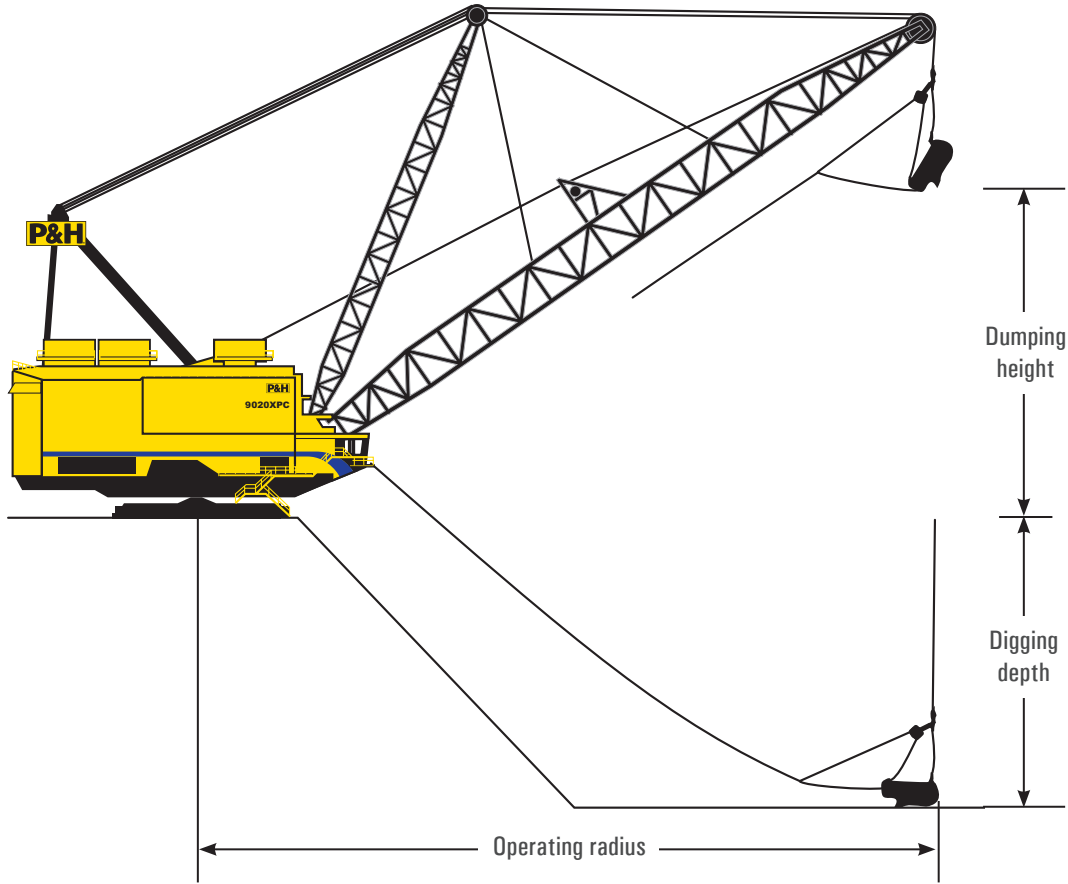
---

**Boom length range**  
325-425 ft. / 100-130 m.

**Bucket capacity range**  
110-160 yd<sup>3</sup> / 85-122 m<sup>3</sup>.



Note: Draglines can be customized to fit customer needs. Specifications can vary based on the specific customization. Contact your local Komatsu dealer to discuss your specific requirements.



**Typical 38° boom setting configurations**  
other angle settings available as required

Bucket capacity at 5000 lbs./cu. yd.	118 cu. yd. 90 cu. m.	134 cu. yd. 102 cu. m.	147 cu. yd. 112 cu. m.	153 cu. yd. 117 cu. m.	153 cu. yd. 117 cu. m.
Hoisting capacity	x 1000 590 lbs. 268 kg.	669 lbs. 303 kg.	737 lbs. 334 kg.	765 lbs. 347 kg.	765 lbs. 347 kg.
Length of boom	425 ft. 129.5 m.	400 ft. 121.9 m.	375 ft. 114.3 m.	350 ft. 106.7 m.	325 ft. 99.1 m.
Operating radius	380 ft. 116 m.	361 ft. 110.1 m.	342 ft. 104.2 m.	322 ft. 98.2 m.	302 ft. 92.2 m.
Maximum dumping height	211 ft. 64.5 m.	193 ft. 58.8 m.	175 ft. 53.3 m.	159 ft. 48.4 m.	143 ft. 43.7 m.
Maximum digging depth	251 ft. 76.7 m.	221 ft. 67.4 m.	197 ft. 60.1 m.	189 ft. 57.6 m.	185 ft. 56.5 m.
Width across shoes	125 ft. 38.1 m.	125 ft. 38.1 m.	125 ft. 38.1 m.	125 ft. 38.1 m.	125 ft. 38.1 m.
Tail swing clearance	90 ft. 27.4 m.	90 ft. 27.4 m.	90 ft. 27.4 m.	90 ft. 27.4 m.	90 ft. 27.4 m.
Rope diameters (twin)	4.5 in. 114 mm.	4.875 in. 124 mm.	5.25 in. 133 mm.	5.5 in. 140 mm.	5.5 in. 140 mm.
Pitch diameter of drums	132 in. 3353 mm.	132 in. 3353 mm.	132 in. 3353 mm.	132 in. 3353 mm.	132 in. 3353 mm.

### Horsepower configuration (HP@690 V.A.C.)

Swing motors	8x1150	8x1150	8x1150	8x1150	8x1150
Hoist motors	6x1800	8x1800	8x1800	8x1800	8x1800
Drag motors	6x1800	8x1800	8x1800	8x1800	8x1800
Walk motors	4x1150	4x1150	4x1150	4x1150	4x1150

### Weights (without bucket)

Net weight	x 1000	16500 lbs.	16472 lbs.	16428 lbs.	16342 lbs.	16245 lbs.
	x 1000	7484 kg.	7472 kg.	7452 kg.	7413 kg.	7369 kg.
Counterweight	x 1000	906 lbs.	902 lbs.	800 lbs.	496 lbs.	69 lbs.
	x 1000	411 kg.	409 kg.	363 kg.	225 kg.	31 kg.
Working weight	x 1000	17642 lbs.	17642 lbs.	17522 lbs.	17144 lbs.	16620 lbs.
	x 1000	8002 kg.	8002 kg.	7948 kg.	7776 kg.	7539 kg.
Standard tub diameter		88 ft.	88 ft.	88 ft.	88 ft.	88 ft.
		26.8 m.	26.8 m.	26.8 m.	26.8 m.	26.8 m.
Approximate tub ground pressure		20.1 psi.	20.1 psi.	20.0 psi.	19.6 psi.	19.0 psi.
		139 KPa.	139 KPa.	138 KPa.	135 KPa.	131 KPa.
Standard shoe size (width x length)		17x88 ft.	17x88 ft.	17x88 ft.	17x88 ft.	17x88 ft.
		5.2x26.8 m.	5.2x26.8 m.	5.2x26.8 m.	5.2x26.8 m.	5.2x26.8 m.
Approximate shoe ground pressure**		36.9 psi.	36.9 psi.	36.6 psi.	35.8 psi.	34.7 psi.
		254 KPa.	254 KPa.	252 KPa.	247 KPa.	239 KPa.

\*\*at 90% working weight

### General specifications

Clearance under shoes	2' 0"
	0.6 m.
Distance from center pin to boom foot	40' 0"
	12.2 m.
Height of boom foot	19.5"
	5.9 m.
Normal length of step	7' 6"
	2.3 m.
Pitch diameter of point sheave	148" or 160"
	3759 mm. or 4064 mm.
Diameter of rail circle	78' 0"
	23.8 m.
Rail width	16.5"
	419 mm.
Quantity and diameter of rollers	171x14"
	356 mm.
Pitch diameter of swing rack	72.4'
	21.1 m.
Maximum working clearance between tub and revolving frame	7' 0"
	2.1 m.

Product designs, specifications and/or data in this document are provided for informational purposes only and are not warranties of any kind. Product designs and/or specifications may be changed at any time without notice. The only warranties that apply to sales of products and services are Komatsu's standard written warranties, which will be furnished upon request.

Komatsu and other trademarks and service marks used herein are the property of Komatsu Ltd., Komatsu America Corp., Komatsu Mining Corp., or one of their affiliates, or the respective owners or licensees.

© 2020 Komatsu Mining Corp. All rights reserved.

EN-9020XPCSpec01-1020-V1



**KOMATSU**

**mining.komatsu**