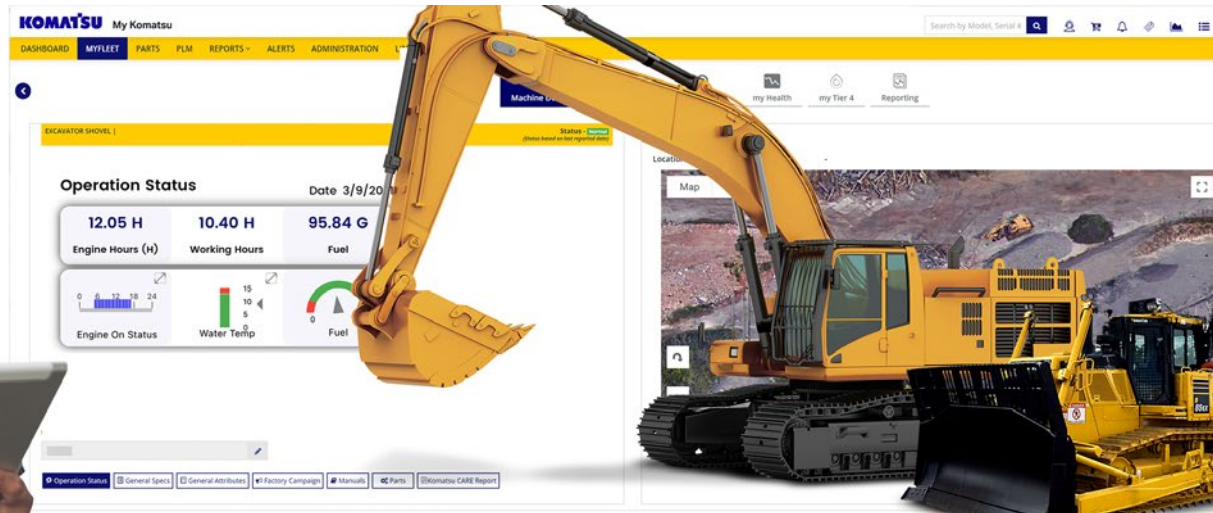
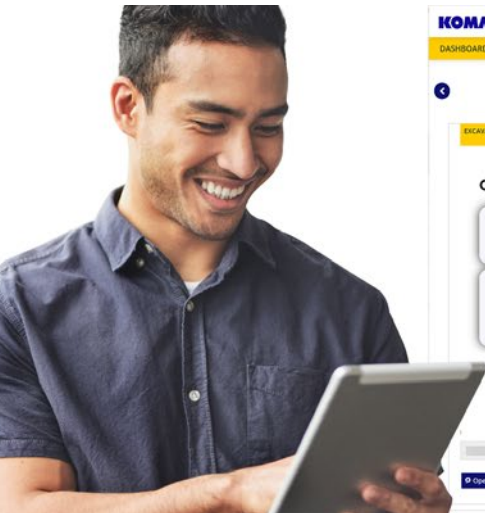


Are you getting value from your telematics data?



Knowledge is power — if you can put it to work. We know how challenging it can be to get the most out of your telematics reports.

We've designed a system that makes it easy to collect, visualize and monitor telematics data from both Komatsu and non-Komatsu machines.

ISO-15143-3 (AEMP 2.0) API integration with My Komatsu

*ISO-15143-3 (AEMP 2.0) telematic API (application programming interface) computer code allows fleet managers to integrate new telematics digital information into existing fleet management systems. This functionality allows fleet managers to view telematics data for non-Komatsu machines. Now you can easily visualize your complete fleet, pull operation reports and set alerts.



Data is generated by equipment (Komatsu or non-Komatsu)

Komatsu data flows to Komtrax™ data storage. ISO 15143-3 (AEMP 2.0) facilitates the extraction and raw data to your choice of database



My Komatsu connects telematic data from all equipment or accesses it through monitoring and analysis services to create powerful analytics dashboard views

My Komatsu connects telematic data from Komatsu and non-Komatsu equipment and creates powerful analytics dashboard views



Make the most of your telematics data

Telematics data can drive results for business operations, but only when you can collect and analyze it efficiently.

My Komatsu, our comprehensive digital hub, analyzes telemetric data from your on-machine technology — Komtrax™ and KomtraxPlus™ or ISO API 15143-3 (AEMP 2.0) data from other OEMs — and displays it on easy-to-read dashboards.

ISO integration and analytics are standard features with your My Komatsu registration. Minimize your logins and visualize your data all in one place.

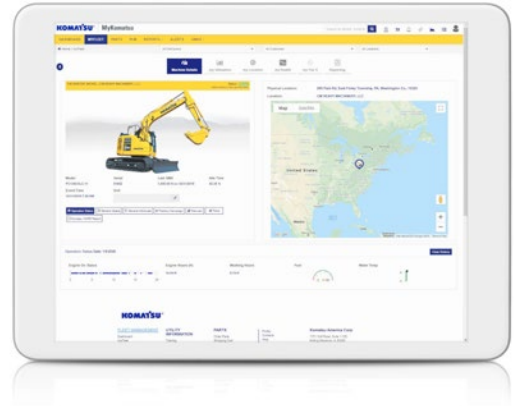
- Actionable information you need to monitor your machines and guide your decisions
- Quickly view and manage data on one dashboard
- Receive maintenance alerts and order parts
- Troubleshoot to minimize downtime
- Monitor for theft and unauthorized use
- Benchmark machine performance
- Track fuel consumption and manage fuel efficiency
- Access data anytime, anywhere

Get the insights that can benefit your bottom line — without all the hassles.

Log into [MyKomatsu.komatsu](https://mykomatsu.komatsu.com) and load your API credentials today.

How to get started

- Contact your OEM representative to obtain your machine's telematics ISO 15143-3 (AEMP 2.0) API credentials.
- Enter your credentials in My Komatsu under "Manage Other OEM." Test the connection.
- Learn more at komatsu.com/mykomatsu.



Available data points

(*varies by OEM and machine application)

- Equipment header
- Last known location
- Cumulative operating hours
- Cumulative fuel used
- Fuel used *last 24 hours
- Cumulative distance traveled
- Cumulative idle hours
- Fuel remaining ratio
- DEF remaining ratio
- Engine status
- Cumulative power take-off hours
- Average daily engine load factor *last 24 hours
- Peak daily maximum speed *last 24 hours
- Cumulative load count
- Cumulative payload total
- Cumulative non-productive regeneration hours
- Cumulative non-productive idle hours

ISO-15143-3 (AEMP 2.0) Compliant OEMs

Atlas Copco	Genie	Manitou
Bauer	Hitachi	Mustang
Bell	JCB	Nifty Lift
Bomag	JLG	SkyJack
Case	John Deere	Terberg
Caterpillar	Kobelco	Terramac
Doosan	Liebherr	Volvo
Dynapac	Link-Belt	Wacker Neuson
Gehl	Magni	Wirtgen Group

© 2022 Komatsu America Corp. All rights reserved. Printed in USA. EN-MKTelematicISO-FL01-0222-V1

Product designs, specifications and/or data in this document are provided for informational purposes only and are not warranties of any kind. Product designs and/or specifications may be changed at any time without notice. The only warranties that apply to sales of products and services are Komatsu's standard written warranties, which will be furnished upon request.

Komatsu and other trademarks and service marks used herein are the property of Komatsu Ltd., Komatsu America Corp., Komatsu Mining Corp., or one of their affiliates, or the respective owners or licensees.

KOMATSU