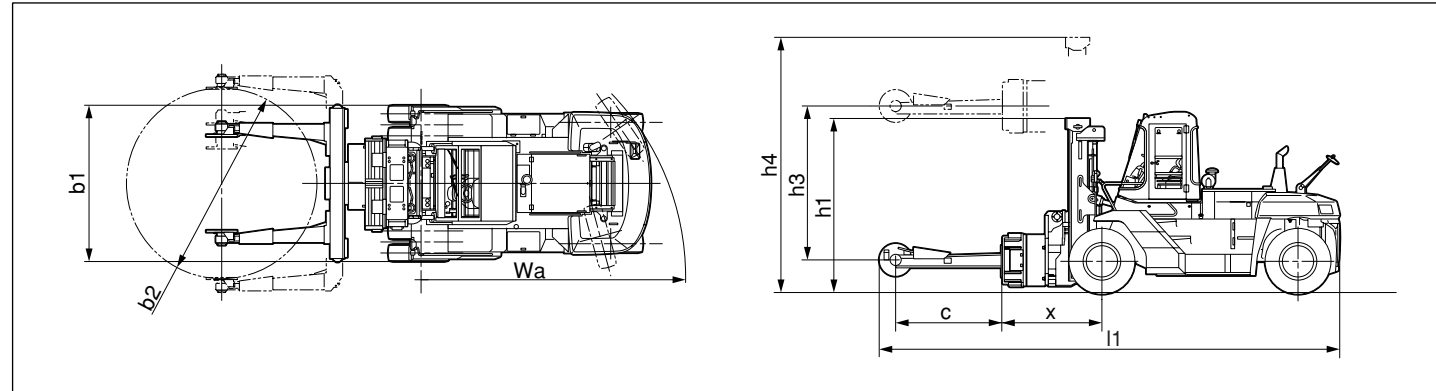


Specifications

		EX50					FX20			GX20			
Characteristics	1.2 Model	FD100-8	FD115-8	FD135-8	FD150E-8	FD160E-8	FD150-6	FD180-6	FD200Z-6	FD200-6			
	1.5 Capacity with Tyre Handler	kg(lb.)	1900(4,190)	2450(5,400)	3100(6,830)	3950(8,710)	4300(9,480)	4820(10,630)	5150(11,350)	6000(13,230)	8000(17,640)		
	1.5.1 Max. Tyre Outer Diameter	mm(in.)	b2 3210(126.4)	3210(126.4)	3210(126.4)	3210(126.4)	3210(126.4)	3600(141.7)	3600(141.7)	3600(141.7)	4000(157.5)		
	1.6 Load Center	mm(in.)	c 1720(67.7)	1720(67.7)	1720(67.7)	1720(67.7)	1720(67.7)	1800(70.9)	1800(70.9)	1800(70.9)	2150(84.6)		
Weight	1.8 Load Distance	mm(in.)	x 1595(62.8)	1595(62.8)	1595(62.8)	1595(62.8)	1595(62.8)	1890(74.4)	—	2050(80.7)	2050(80.7)		
	2.1 Service Weight	kg(lb.)	18190(40,100)	19250(42,440)	20120(44,360)	21010(46,320)	21570(47,550)	27500(60,630)	—	41970(92,530)	43560(96,030)		
	2.2 Axle Loading	Loaded	Front	kg(lb.)	18140(39,990)	19330(42,620)	20350(44,860)	21980(48,460)	22580(49,780)	29450(64,930)	—	43610(96,140)	47000(103,620)
			Rear	kg(lb.)	1950(4,300)	2370(5,230)	2870(6,330)	2980(6,570)	3290(7,250)	2870(6,330)	—	4360(9,610)	4560(10,050)
	2.3	Unloaded	Front	kg(lb.)	13990(30,840)	13980(30,820)	13940(30,730)	13800(30,420)	13690(30,180)	19800(43,650)	—	31270(68,940)	31560(69,580)
			Rear	kg(lb.)	4200(9,260)	5270(11,620)	6180(13,620)	7210(15,900)	7880(17,370)	7700(16,980)	—	10700(23,590)	12000(26,460)
	Dimensions	4.2 Mast Height, Lowered	mm(in.)	h1 3240(127.6)	3260(128.3)	3270(128.7)	3270(128.7)	3290(129.5)	3550(139.8)	—	3850(151.6)	4300(169.3)	
4.4 Std. Lift Height		mm(in.)	h3 3000(118.1)	3000(118.1)	3000(118.1)	3000(118.1)	3000(118.1)	3000(118.1)	3000(118.1)	3000(118.1)	3000(118.1)		
4.5 Mast Height, Extended		mm(in.)	h4 4750(187.0)	4770(187.8)	4780(188.2)	4780(188.2)	4800(189.0)	5060(199.2)	—	5360(211.0)	5810(228.7)		
4.20 Length, with Tyre Handler		mm(in.)	l1 7170(282.3)	7190(283.1)	7520(296.1)	7570(298.0)	7670(302.0)	8650(340.6)	—	8900(350.4)	9950(391.7)		
4.21 Width, Tyre Handler		mm(in.)	b1 2550(100.4)	2550(100.4)	2550(100.4)	2550(100.4)	2550(100.4)	2985(117.5)	—	3100(122.0)	3100(122.0)		
4.35 Turning Radius (Rear)		mm(in.)	Wa 4000(157.5)	4010(157.9)	4300(169.3)	4350(171.3)	4500(177.2)	5000(196.9)	5000(196.9)	5200(204.7)	5850(230.3)		
Performance	5.1 Traveling Speed (FWD)	Loaded 1st/2nd/3rd/4th	km/h	8.5/18.5/29.5/—	8.5/19/30/—	9/19.5/29.5/—	9/19.5/29.5/—	9.5/20/30/—	7/12/20/24	—	8/13/18/20	9/14/21/24	
			(mph)	(5.3/11.5/18.3/—)	(5.3/11.8/18.6/—)	(5.6/12.1/18.3/—)	(5.6/12.1/18.3/—)	(5.9/12.4/18.6/—)	(4.3/7.5/12.4/14.9)	—	(5.0/8.1/11.2/12.4)	(5.6/8.7/13.0/14.9)	
	Unloaded 1st/2nd/3rd/4th	km/h	9/19/31/—	9/20/32/—	9.5/21/32/—	9.5/21/32/—	10/21.5/32/—	8/13/21/27	—	9/14/20/23	10/16/23/27		
		(mph)	(5.6/11.8/19.3/—)	(5.6/12.4/19.9/—)	(5.9/13.0/19.9/—)	(5.9/13.0/19.9/—)	(6.2/13.4/19.9/—)	(5.0/8.1/13.0/16.8)	—	(5.6/8.7/12.4/14.3)	(6.2/9.9/14.3/16.8)		
	5.2 Lifting Speed	Loaded	mm/s(fpm)	325(64)	325(64)	325(64)	325(64)	320(63)	360(71)	—	270(53)	290(57)	
			mm/s(fpm)	335(66)	335(66)	335(66)	335(66)	335(66)	380(75)	—	280(55)	300(59)	
5.3 Lowering Speed	Unloaded	mm/s(fpm)	450(89)	450(89)	450(89)	450(89)	450(89)	400(79)	—	350(69)	350(69)		
		mm/s(fpm)	480(94)	480(94)	480(94)	480(94)	480(94)	400(79)	—	350(69)	350(69)		
Engine	7.1 Make		KOMATSU	KOMATSU	KOMATSU	KOMATSU	KOMATSU	ISUZU	ISUZU	CUMMINS			
	7.2 Rated Out, SAE net	kW(HP)	122(164)	122(164)	122(164)	122(164)	122(164)	110(148)	110(148)	110(148)	147(197)		
	7.3.1 Max. Torque, SAE net	N·m(lbft)@min ⁻¹	575(424)@1600	575(424)@1600	575(424)@1600	575(424)@1600	575(424)@1600	510(376)@1600	510(376)@1600	510(376)@1600	920(679)@1500		

Note: Specification for FD180-6 with Tyre handler is under preparation. As for details, please ask Komatsu Utility.

Dimensions



TYRE HANDLER



**Capacity 1900 - 8000 kg
4,190 - 17,640 lb.**

**Max. Tyre O.D. 3210 - 4000 mm
126.4 - 157.5 in.**

www.Komatsu-utility.com

Printed in Japan 1110-1-01shi

Komatsu Utility Co., Ltd.

A Range of Features for Productivity and Safety

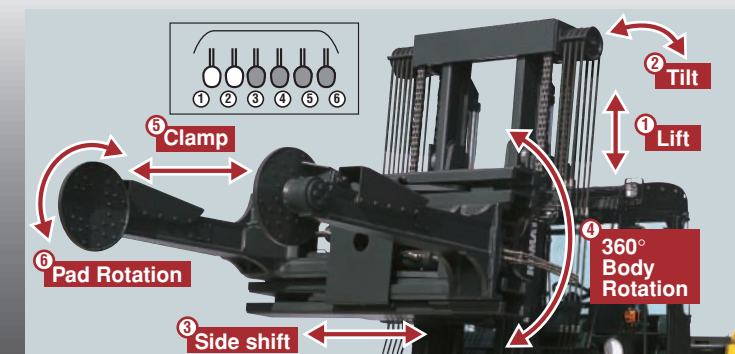
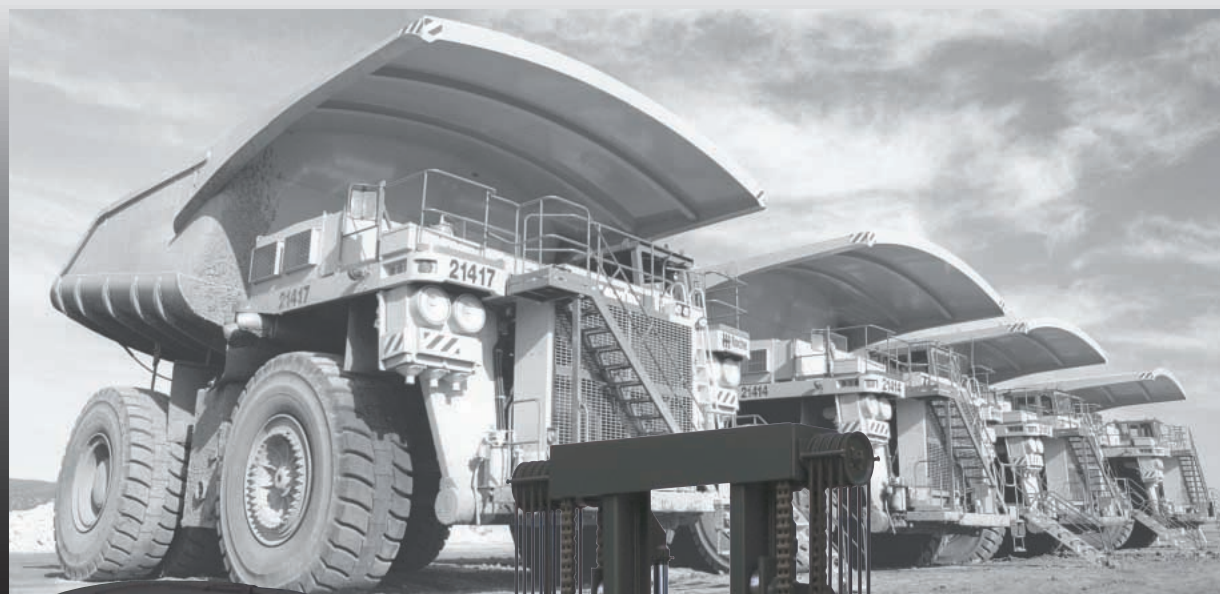


Komatsu's exclusive, integrated design provides superb value, reliability and versatility. The manipulator stands up to the toughest conditions -- offering optimum productivity in combination with our rugged large capacity heavy-duty trucks. It is a real workhorse that can handle the heaviest tyres with ease.

Designed for **Productivity**

Designed for **Safety**

A solid grip and precise hydraulic control --the Komatsu Tyre Handler offers maximum safety inside shops or outside mining field. The operator can move the tyre up or down, tilt it, shift it to the side, body rotate and pad rotate it with complete confidence -- mounting the whole tyre assembly over the wheel hub and lining it up with the mounting holes with pinpoint accuracy. He can position the tyre before fitting it to the rim, turn it for inspection and move it and stack it for storage -- all safely and surely.



Multi hydraulic operation offers six independent functions, lift, tilt, side-shift, 360 degree body rotation, clamp and pad rotation. They are all standard with the Komatsu Tyre Handler. Each control lever is ergonomically placed to the right of the steering wheel so the operator can easily identify which is which.



Designed for **Multi-Functions**

Designed for **Wide Line-Up**

Komatsu Tyre Handlers are available from 1900 kg (4,190 lb.) capacity to 8000 kg (17,640 lb.) capacity with a maximum tyre outer diameter (O.D.) of 3210 mm (126.4 in.) to 4000 mm (157.5 in.) for large mining vehicles. Special sizes are available upon request.

Komatsu Truck Model	Applicable Maximum Tyre					
	DUMP TRUCK			WHEEL LOADER		
	Size	Weight kg(lb.)	Outer Diameter mm(in.)	Size	Weight kg(lb.)	Outer Diameter mm(in.)
FD100	24.00 x R35	1466(3,225)	2121(83.5)	35/65-33	1768(3,889)	2103(82.8)
FD115 FD135	27.00 x R49	2393(5,265)	2690(105.9)			
FD150E	33.00 x R51	3857(8,485)	3053(120.2)	41.25/70-39	2694(5,927)	2499(98.4)
FD160E						
FD150 FD180	36.00-R51	4264(9,380)	3150(124.0)	45/65-51	4225(9,296)	2746(108.1)
FD200Z	40.00 x R57	5840(12,848)	3581(141.0)	50/65-51	5173(11,381)	3076(121.1)
FD200	50/90 x R57	7530(16,600)	3820(150.4)	55/80-R57	8414(18,550)	3708(146.0)

Tyre weight is different by manufacturers. All tyre specifications are reference only. Please contact your Komatsu dealer for a truck selection.