

# Harvesters



From thinning to clear-cutting  
– Harvesters for every task



# Creating value together

The forestry industry supplies valuable materials that benefit us all. From construction components for houses and fences, through to packaging for parcels and the pages of our kids' bedtime story books, the materials even provide energy to heat our homes.

As a raw material, wood also plays an important role in the transition from fossil-based materials to more renewable alternatives. And it is your hard work that makes all this possible, so thank you!

We want to be a partner you can trust when creating these values. Komatsu has stood by your side for an entire century, offering unique quality, peace of mind, knowledge and support. Our way of working, from innovation to manufacturing, is distinguished by our partnership with you, our customers. Together, we create the solutions required to achieve a sustainable future for people, businesses and our planet.





# Index

- 2** Creating value together
- 4** Benefits
- 6** The cab
- 8** Heads
- 10** Komatsu 901
- 12** Komatsu 901XT
- 14** Komatsu 911
- 16** Komatsu 931
- 18** Komatsu 931XT
- 20** Komatsu 951
- 22** Komatsu 951XT
- 24** Machine options
- 27** Genuine parts
- 28** Smart Forestry
- 30** The full range of Harvesters

# Komatsu benefits

Every detail in your Komatsu harvester is designed to support you in your work – day after day. From our unique three-pump system, which gives you extra power while reducing fuel consumption, to the high ground clearance that makes off-road driving effortless. These are just a few of the innovations that help you work more efficiently and profitably.

## Productivity

1. The right head for each felling assignment ensures perfect results every time
2. A powerful parallel crane offers optimum lifting force and a 360-degree work area
3. Exceptional hydraulic coordination characteristics enable a high degree of simultaneous crane, head and transmission operation
4. Our innovative three-pump system combining high productivity with low fuel consumption
5. Working hydraulics with generous flow capacity for increased production
6. Engine configurations for different emissions legislations (Stage V/T4F/Stage II/MAR 1)
7. A powerful engine – optimised for offroad driving and crane operation with low fuel consumption
8. Hydrostatic system optimises engine use and reduces fuel consumption
9. Slew system with direct drive offers advantages such as smooth, precise movements, low noise levels in the cab and an integrated parking brake
10. High tractive force ensures offroad manoeuvrability in challenging terrain
11. The Komatsu concept offers a very stable harvester with unique, load-sensing stabilisation – stable even on inclines
12. Balanced portal bogie for excellent ground clearance and comfort
13. Simple and precise crane Control with Smart Crane **Option**

## User-friendliness

- |                                                                                                                                       |                                                                                                                                                  |
|---------------------------------------------------------------------------------------------------------------------------------------|--------------------------------------------------------------------------------------------------------------------------------------------------|
| 14. Proven, ergonomic and reliable cab concept                                                                                        | 22. Two different stump treatments available <b>Option</b>                                                                                       |
| 15. Quiet and comfortable work environment                                                                                            | 23. LED working lights for even brighter working conditions <b>Option</b>                                                                        |
| 16. Spacious cab with superior visibility in all directions                                                                           | 24. Levelling cab for optimal ergonomics and constantly high slewing force                                                                       |
| 17. The MaxiXT control system is the intelligence of the machine and includes a number of smart advantages that increase productivity | 25. Daily service conveniently performed from both ground level and the cab                                                                      |
| 18. Hand controllers, pedals and frequently used controls are conveniently located                                                    | 26. Automatic central lubrication is integrated with MaxiXT and the generous volume of the grease tank reduces daily service needs <b>Option</b> |
| 19. Convenient storage behind driver's seat                                                                                           | 27. Two extra fire extinguishers <b>Option</b>                                                                                                   |
| 20. Battery status monitoring in MaxiXT <b>Option</b>                                                                                 |                                                                                                                                                  |
| 21. Storage options in the front                                                                                                      |                                                                                                                                                  |



## Reliability

- 28. Robust frame design with high ground clearance
- 29. Sealed drive axles and sealed articulated joint
- 30. Bogie mounts have a robust design
- 31. Robust AdBlue system
- 32. Durable diesel engine with long service life
- 33. Well-designed electrical system with robust connectors

# A cab to enjoy

The cab of a Komatsu harvester is designed with comfort in mind, ensuring job satisfaction as well as performance. Learn more about how the ergonomic and well-considered design of our harvester cabs can ease your working day.

### A spacious cab with excellent visibility

The cab is spacious with large windows offering a good overview of the work area. The operator can also adjust the placement of the screen to maximise visibility.

The entire cab, together with the crane pillar, can be rotated 360 degrees for maximum working range. With the optional seat column, the seat can be rotated 180 degrees for greater convenience.

### A comfortable work environment

The cab offers a quiet and comfortable work environment, leaving you feeling more energetic at the end of your shift. The driver's seat is ergonomically designed with good back support and many adjustment options to suit your preferences. The seat has a built-in heater and can also be equipped with ventilation. Moreover, the high-capacity air conditioning unit ensures that you have a comfortable indoor climate – regardless of the outdoor temperature.

### Stay upright in our levelling cab

Komatsu harvesters are equipped with a levelling function that enables the operator to remain upright regardless of any lean of the machine caused by the terrain. Naturally, this makes your working day more comfortable, but it also benefits productivity. Since the crane is right next to the cab, it too remains in an upright position even in steep terrain. This means that no energy is used to compensate for any lean of the machine, allowing the crane to remain highly productive in demanding terrain.



### Ergonomic joysticks, keypads and pedals

Most of a harvester operator's work is performed within the length of their forearm, which is why we ensure our joysticks, keypads and pedals are ergonomically designed. In addition to choosing between EME joysticks and mini joysticks, you can use the many individual settings to adjust the ergonomics to take as much load as possible off your hands and wrists. Quite simply, a Komatsu machine should be comfortable to operate.

Instead of an Orbitrol steering wheel, the harvester uses a convenient electric mini-steering wheel found on the operator's right-hand panel.

### Komatsu comforts

The cab has an exclusive interior with surfaces that are easy to clean. There are many storage compartments and smart spaces – including a flat surface for food or a coffee cup. An optional mobile holder can be used to keep your phone safe, while Komatsu MediaZone makes it easy to connect your phone to listen to an audiobook or music.

For an easier working day, you can both cool and heat your food box. Moreover, one of the harvester's storage compartments can be used to cool bottles, which is especially useful in hot climates.



### Simple service

Servicing a Komatsu harvester is easy. To start with, all of the daily inspection points can be reached from ground level and without the need to open any hoods. Additionally, wherever possible we have grouped the maintenance and inspection points to make for faster and safer servicing.

For added convenience, you can read fluid levels from inside the cab, while automatic pressure calibration for the crane and the harvester head eliminate unnecessary tasks. We have also made it easier to top up the diesel and AdBlue, and to change the oil and replace the filters.



# The right head for every assignment

The choice of harvester model always begins with the type of forest in which you work. This determines the best choice of head, which in turn determines which harvester you need. We offer an extremely broad range of harvester heads, from those with a two- or four-wheel feed to specialist heads for harvesting eucalyptus. What's more, various options enable our heads to be adapted to different types of harvesting.



### S class

The S class heads are renowned for their simple and proven design, which can handle the demands of working in the forest. They are especially productive in forests with crooked stems. The S heads are easy to service and maintain and are best described as reliable in all weathers. Some of the S heads also have options that make them ideal for debarking.



### C class

The C class heads are characterised by high productivity coupled with low energy consumption, the result of the unique feed system in which the stem is held by the feed rollers. The C heads also have several innovative solutions that make them popular companions in the forest.



### E class

The E class heads are our eucalyptus specialists. We have several highly appreciated stalwarts developed especially for efficient debarking and high productivity. The broad range of sizes and many options make it easy to find the right combination for your particular type of harvesting.





### Five innovative reasons for choosing a Komatsu head

**The Constant Cut saw unit** ensures the correct chain speed throughout the cutting cycle without overspeeding. Available on C heads and most S heads.

**Centralised lubrication points** offer easy access. The head also gains a fixed service position for both lubrication and fluid top-ups, simplifying service. Available on C heads.

**Flex Friction Control** ensures that the stem is correctly positioned in the feed path. It offers low friction and effective feeding. Available on S heads.

**The feed system** on the C heads has a unique design in which the stem is held by the feed rollers, resulting in low energy consumption and enabling high measurement accuracy.

**The Find End** option resets length measurement without cutting the stem, ensuring less residue and a high level of accuracy.

# Komatsu 901

The Komatsu 901 is a compact and agile thinning harvester that can easily manoeuvre in dense stands. Despite its size, this harvester has a powerful crane and impressive work capacity, making it a productive partner in the forest.

The **Komatsu 901** is our smallest harvester, designed for agile and efficient thinning operations. Launched in 1984, it was the world's first single-grip harvester with a purpose built harvester chassis, and introduced the stable Komatsu concept still used today. Despite its compact size, the 901 offers impressive performance

with a powerful crane and exceptional maneuverability. Operators enjoy the same spacious cab, excellent visibility, and ergonomic design as in all Komatsu harvesters, ensuring a comfortable and productive work environment. The 901 is the perfect combination of size, strength, and operator comfort.





### Dimensions (with 600 mm tyres)

<b>A</b> Width	front: 2,620 mm, rear: 2,720 mm
<b>B</b> Length, total	7,235 mm
<b>C</b> Length, front axle to articulated joint	1,850 mm
<b>D</b> Length, articulated joint to rear axle	1,700 mm
<b>E</b> Transport height	3,820*/3,780** mm
<b>F</b> Ground clearance	635 mm

NB: Stated dimensions are nominal and may vary depending on production tolerances and optional equipment.

\* Dimension up to roof, upright cab (with tyre compression)

\*\* Dimension cab tilted back with tilted light bar (with tyre compression)

### Weight

Kerb weight from	17,600 kg
------------------	-----------

### Engine

	6-cylinder diesel engine with turbo and intercooler. Conforms to the requirements of EU Stage V (Europe), Tier 4F (North America) and Stage II (other countries)
Engine type	Stage V: 66 LFTN-D5, Tier 4F: 66 LFTN-D4, Stage II: 66 LFEN-A2
Engine displacement	6.6 l
Power, max.	Stage V and Tier 4F: 170 kW DIN at 1,900 rpm, Stage II: 165 kW DIN at 1,900 rpm
Torque	Stage V, Tier 4F and Stage II: 950 Nm vid 1,500 rpm
AdBlue® tank	42 l
Fuel tank	approx. 370 l

### Power transmission/transmission

	Hydrostatic-mechanical, controlled via MaxiXT. Transfer gearbox with 2 positions. Disengageable front-wheel drive.
Differential locks	Front and rear axles. Mechanical electro-hydraulic control.
Driving speed	0–approx. 24 km/h /
Tractive force	164 kN

Scan the QR code for more features and specifications



# Komatsu 901XC

The Komatsu 901XC is an agile thinning harvester for anyone harvesting in steep and difficult terrain. The eight-wheel design ensures an especially stable harvester that also leaves less of a mark thanks to its low ground pressure.

The Komatsu **901XC** builds on the legacy of the 901 with innovative eight-wheel technology, delivering outstanding stability and performance in steep or challenging terrain. This versatile harvester ensures low and even ground pressure, making it an ideal choice for sensitive environments. The 901XC retains

the 901's compact size and powerful capabilities while offering improved ground contact and traction. Equipped with a spacious cab, excellent visibility, and ergonomic features, it provides a comfortable and efficient working experience.





### Dimensions (with 600 mm tyres)

<b>A</b> Width	2,776 mm
<b>B</b> Length, total	7,705 mm
<b>C</b> Length, front axle to articulated joint	1,850 mm
<b>D</b> Length, articulated joint to rear axle	2,100 mm
<b>E</b> Transport height	3,840*/3,810** mm
<b>F</b> Ground clearance	650 mm

NB: Stated dimensions are nominal and may vary depending on production tolerances and optional equipment.

\* Dimension up to roof, upright cab (with tyre compression)

\*\* Dimension cab tilted back with tilted light bar (with tyre compression)

### Weight

Kerb weight from	20,210 kg
------------------	-----------

### Engine

	6-cylinder diesel engine with turbo and intercooler. Conforms to the requirements of EU Stage V (Europe), Tier 4F (North America) and Stage II (other countries)
Engine type	Stage V: 66 LFTN-D5, Tier 4F: 66 LFTN-D4, Stage II: 66 LFEN-A2
Engine displacement	6.6 l
Power, max.	Stage V and Tier 4F: 170 kW DIN at 1,900 rpm, Stage II: 165 kW DIN at 1,900 rpm
Torque	Stage V, Tier 4F and Stage II: 950 Nm vid 1,500 rpm
AdBlue® tank	42 l
Fuel tank	approx. 415 l

### Power transmission/transmission

	Hydrostatic-mechanical, controlled via MaxiXT. Transfer gearbox with 2 positions. Disengageable front-wheel drive.
Differential locks	Front and rear axles. Mechanical electro-hydraulic control.
Driving speed	0–approx. 21.5 km/h
Tractive force	184 kN

Scan the QR code for more features and specifications



# Komatsu 911

The Komatsu 911 is an agile harvester that, depending on the choice of crane, can be optimised for thinning or lighter final logging. The larger wheels are an advantage when passing obstacles and in snowy terrain.

The **Komatsu 911** is an agile and versatile harvester, ideal for a wide range of forestry tasks. Introduced in 1994, it was originally designed for final logging but has since become a popular choice for both thinning and final felling. With two crane options – the lighter 200H for enhanced agility or the larger 230H for heavier or

specialist heads – it can be tailored to various logging needs. Combining impressive performance with operator comfort, it features a spacious cab, excellent visibility, and ergonomic design. The 911 exemplifies Komatsu's innovation and adaptability in modern forestry.





**Dimensions (with 600 mm tyres)**

	200H crane	230H crane
<b>A</b> Width	2,726 mm	2,726 mm
<b>B</b> Length, total	7,345 mm	7,525 mm
<b>C</b> Length, front axle to articulated joint	1,850 mm	1,930 mm
<b>D</b> Length, articulated joint to rear axle	1,700 mm	1,800 mm
<b>E</b> Transport height	3,845*/3,800** mm	3,950*/3,910** mm
<b>F</b> Ground clearance	660 mm	670 mm

NB: Stated dimensions are nominal and may vary depending on production tolerances and optional equipment.

\* Dimension up to roof, upright cab (with tyre compression)

\*\* Dimension cab tilted back with tilted light bar (with tyre compression)

**Weight**

Kerb weight	200H: 17,850 kg, 230H: 19,680 kg
-------------	----------------------------------

**Engine**

	6-cylinder diesel engine with turbo and intercooler. Conforms to the requirements of EU Stage V (Europe), Tier 4F (North America), MAR-1 (Brazil) and Stage II (other countries)
Engine type	Stage V: 66 LFTN-D5, Tier 4F: 66 LFTN-D4, MAR-1 (911-230H): 74 CW3, Stage II: 66 LFEN-A2
Engine displacement	6.6/7.4 l
Power, max.	Stage V and Tier 4F: 170 kW DIN at 1,900 rpm, MAR-1: 185 kW DIN at 1,900 rpm, Stage II: 165 kW DIN at 1,900 rpm
Torque	Stage V, Tier 4F and Stage II: 950 Nm at 1,500 rpm, MAR-1: 1,000 Nm at 1,500 rpm
AdBlue® tank	42 l
Fuel tank	approx. 370 l (405 l with 230H)

**Power transmission/transmission**

	Hydrostatic-mechanical, controlled via MaxiXT. Transfer gearbox with 2 positions. Disengageable front-wheel drive.
Differential locks	Front and rear axles. Mechanical electro-hydraulic control.
Driving speed	200H: 0–24 km/h, 230H: 0–21 km/h
Tractive force	200H: 167 kN, 230H: 189 kN

Scan the QR code for more features and specifications



# Komatsu 931

The Komatsu 931 is a powerful and agile harvester, built to handle both late thinning and final felling with ease. Its combination of strength and versatility makes it an all-round forestry machine.

The **Komatsu 931** is designed to deliver top performance in demanding forestry operations. With its impressive power and agility, it excels in both late thinning and final felling, making it a reliable choice for a wide range of tasks. The harvester offers a

spacious cab with excellent visibility and ergonomic controls, ensuring a comfortable and productive work environment. Built for versatility and efficiency, the Komatsu 931 is a dependable and high-performing machine in all types of forestry conditions.





### Dimensions (with 600 mm tyres)

<b>A</b> Width	2,726 mm
<b>B</b> Length, total	7,525 mm
<b>C</b> Length, front axle to articulated joint	1,930 mm
<b>D</b> Length, articulated joint to rear axle	1,800 mm
<b>E</b> Transport height	3,950*/3,910** mm
<b>F</b> Ground clearance	685 mm

NB: Stated dimensions are nominal and may vary depending on production tolerances and optional equipment.

\* Dimensions up to roof, straight cab (with tyre compressions)

\*\* Dimensions cab tilted back with tilted light bar (with tyre compressions)

### Weight

Kerb weight from	19,880 kg
------------------	-----------

### Engine

	6-cylinder diesel engine with turbo and intercooler. Conforms to the requirements of EU Stage V (Europe), Tier 4F (North America), MAR-1 (Brazil) and Stage II (other countries)
Engine type	Stage V: 74 LFTN-D5, Tier 4F: 74 LFTN-D4, MAR-1: 74 CW3, Stage II: 74 LFEN-A2
Engine displacement	7.4 l
Power, max.	Stage V, Tier 4F and Stage II: 190 kW DIN at 1,850 rpm, MAR-1: 193 kW DIN at 1,900 rpm
Torque	Stage V, Tier 4F and Stage II: 1,130 Nm at 1,500 rpm, MAR-1: 1,000 Nm at 1,500 rpm
AdBlue® tank	42 l
Fuel tank	approx. 405 l

### Power transmission/transmission

	Hydrostatic-mechanical, controlled via MaxiXT. Transfer gearbox with two positions. Disengageable front-wheel drive.
Differential locks	Front and rear axles. Mechanical electro-hydraulic control.
Driving speed	0–approx. 21 km/h
Tractive force	189 kN

Scan the QR code for more features and specifications



# Komatsu 931XC

The Komatsu 931XC is a versatile eight-wheeled harvester, designed for outstanding stability and low ground pressure. It's the perfect choice for steep terrain and challenging environments where reliability is key.

The **Komatsu 931XC** is Komatsu's first eight-wheeled harvester, developed to tackle steep and rugged terrain with ease. Its unique eight-wheel design ensures exceptional stability, low ground pressure, and excellent off-road handling, making it ideal for soft ground and sensitive environments.

With the same operator-friendly features as all

Komatsu harvesters – a spacious cab, ergonomic controls, and excellent visibility – the 931XC provides both comfort and performance. Whether you're working on challenging slopes or delicate ground, the 931XC delivers reliability, versatility, and low environmental impact.



**Dimensions (with 600 mm tyres)**

	931	931XC
<b>A</b> Width	2,726 mm	2,776 mm
<b>B</b> Length, total	7,525 mm	8,015 mm
<b>C</b> Length, front axle to articulated joint	1,930 mm	1,930 mm
<b>D</b> Length, articulated joint to rear axle	1,800 mm	2,150 mm
<b>E</b> Transport height	3,950*/3,910** mm	3,975*/3,930** mm
<b>F</b> Ground clearance	685 mm	705 mm

NB: Stated dimensions are nominal and may vary depending on production tolerances and optional equipment.

\*Dimensions up to roof, straight cab (with tyre compressions)

\*\*Dimensions cab tilted back with tilted light bar (with tyre compressions)

**Weight**

Kerb weight from	21,900 kg
------------------	-----------

**Engine**

	6-cylinder diesel engine with turbo and intercooler. Conforms to the requirements of EU Stage V (Europe), Tier 4F (North America) and Stage II (other countries)
Engine type	Stage V: 74 LFTN-D5, Tier 4F: 74 LFTN-D4, Stage II: 74 LFEN-A2
Engine displacement	7.4 l
Power, max.	Stage V, Tier 4F and Stage II: 190 kW DIN at 1,850 rpm, MAR-1: 193 kW DIN at 1,900 rpm
Torque	Stage V, Tier 4F and Stage II: 1,130 Nm at 1,500 rpm, MAR-1: 1,000 Nm at 1,500 rpm
AdBlue® tank	42 l
Fuel tank	approx. 480 l

**Power transmission/transmission**

	Hydrostatic-mechanical, controlled via MaxiXT. Transfer gearbox with two positions. Disengageable front-wheel drive.
Differential locks	Front and rear axles. Mechanical electro-hydraulic control.
Driving speed	0–approx. 20 km/h
Tractive force	200 kN

Scan the QR code for more features and specifications



# Komatsu 951

The Komatsu 951 is our largest six-wheeled harvester, optimized for final logging. It delivers high performance and impressive capacity for carrying large heads, making it ideal for demanding forestry operations.

The **Komatsu 951** is a powerful and durable machine designed to maximise productivity in final logging operations. With a sturdy crane capable of handling large heads, it ensures efficient management of heavy workloads. Its design prioritises operator comfort, featuring a spacious cab, excellent visibility, and

ergonomic controls to enhance efficiency and reduce fatigue. Built for reliability and high performance, the Komatsu 951 is the perfect choice for professional logging operations that demand capacity and precision.





### Dimensions (with 710 mm tyres)

<b>A</b> Width	3,060 mm
<b>B</b> Length, total	8,285 mm
<b>C</b> Length, front axle to articulated joint	2,300 mm
<b>D</b> Length, articulated joint to rear axle	1,850 mm
<b>E</b> Transport height	3,985*/3,945** mm
<b>F</b> Ground clearance	665 mm

NB: Stated dimensions are nominal and may vary depending on production tolerances and optional equipment.

\* Dimension up to roof, upright cab (with tyre compression)

\*\* Dimension cab tilted back with tilted light bar (with tyre compression)

### Weight

Kerb weight from	22,790 kg
------------------	-----------

### Engine

	6-cylinder diesel engine with turbo and intercooler. Conforms to the requirements of EU Stage V (Europe), Tier 4F (North America) and Stage II (other countries)
Engine type	Stage V: 74 LFTN-D5, Tier 4F: 74 LFTN-D4, Stage II: 74 LFEN-A2
Engine displacement	7.4 l
Power, max.	Stage V and Tier 4F: 214 kW DIN at 1,850 rpm, Stage II: 210 kW DIN at 1,850 rpm
Torque	Stage V, Tier 4F and Stage II: 1,280 Nm at 1,500 rpm
AdBlue® tank	50 l
Fuel tank	approx. 529 l

### Power transmission/transmission

	Hydrostatic-mechanical, controlled via MaxiXT. Transfer gearbox with two positions. Disengageable front-wheel drive.
Differential locks	Front and rear axles. Mechanical electro-hydraulic control.
Driving speed	0–approx. 24 km/h
Tractive force	222 kN

Scan the QR code for more features and specifications



# Komatsu 951XC

The Komatsu 951XC is our largest eight-wheeled harvester, developed for challenging terrain. Its stable design, low ground pressure, and excellent mobility make it ideal for steep and demanding environments.

The **Komatsu 951XC** is a stable and versatile machine created to handle steep and rugged terrain with ease. The strong transmission, powerful yet compact design and large work area ensure efficient operation in the most demanding conditions. Like all Komatsu harvesters, it features a spacious cab with ergonomic

controls and excellent visibility, ensuring operator comfort throughout long workdays.

Whether navigating tough slopes or sensitive environments, the 951XC offers power, precision, and reliability to tackle the toughest forestry tasks.





#### Dimensions (with 710 mm tyres)

<b>A</b> Width	2,980 mm
<b>B</b> Length, total	8,015 mm
<b>C</b> Length, front axle to articulated joint	1,930 mm
<b>D</b> Length, articulated joint to rear axle	2,150 mm
<b>E</b> Transport height	3,980*/3,940** mm
<b>F</b> Ground clearance	708 mm

NB: Stated dimensions are nominal and may vary depending on production tolerances and optional equipment.

\* Dimension up to roof, upright cab (with tyre compression)

\*\* Dimension cab tilted back with tilted light bar (with tyre compression)

#### Weight

Kerb weight from	23,275 kg
------------------	-----------

#### Engine

	6-cylinder diesel engine with turbo and intercooler. Conforms to the requirements of EU Stage V (Europe), Tier 4F (North America) and Stage II (other countries)
Engine type	Stage V: 74 LFTN-D5, Tier 4F: 74 LFTN-D4, Stage II: 74 LFEN-A2
Engine displacement	7.4 l
Power, max.	Stage V and Tier 4F: 214 kW DIN at 1,850 rpm, Stage II: 210 kW DIN at 1,850 rpm
Torque	Stage V, Tier 4F and Stage II: 1,280 Nm at 1,500 rpm
AdBlue® tank	42 l
Fuel tank	approx. 466 l

#### Power transmission/transmission

	Hydrostatic-mechanical, controlled via MaxiXT. Transfer gearbox with two positions. Disengageable front-wheel drive.
Differential locks	Front and rear axles. Mechanical electro-hydraulic control.
Driving speed	0–21 km/h
Tractive force	242 kN

Scan the QR code for more features and specifications



# Optimise your work environment

The harvester is your work environment, so we have developed a number of options to make your working day both comfortable and ergonomic, while helping you to maintain high productivity. All for the sake of your wellbeing – both today and after many years on the job.



## Tailor your workplace

The cab of a Komatsu harvester has an ergonomic design with many added conveniences. We even have a wide range of extra equipment that enables you to tailor your workplace to suit your personal preferences. Optional extras include:

- Sequence control for both EME and mini joysticks
- Interior ceiling and floor lighting, reading lamp on flexible arm
- Radio with Bluetooth and hands-free support
- Sun shades
- MediaZone
- Torch
- Environment filter (3P class)
- Mobile holder
- Food box heater
- Cooler
- Touchscreen 12"
- Additional lights
- Automatic central lubrication
- Engine hood guard
- Diesel heater
- Electric engine heater
- Electric oil filler
- Electric diesel filler



### Powerful lighting

Good lighting conditions are important if you are to do your job properly. And good lighting also leaves you feeling more energetic at the end of your shift. Our machines come equipped with powerful working lights as standard, although we offer a broad range of additional lights for even better lighting.



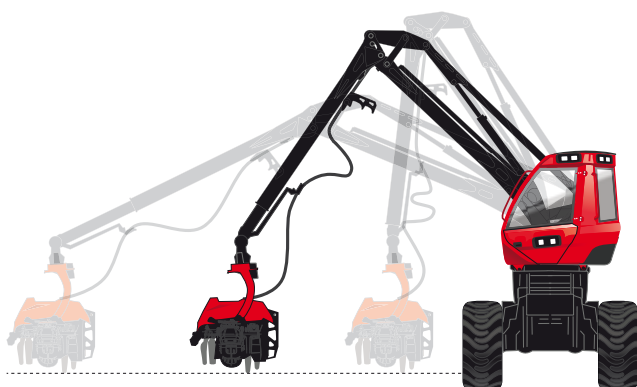
### Remote-controlled central locking

Optional remote-controlled central locking is available for our machines. The remote control has a generous range and the lock button locks the cab door, the emergency exit, the storage boxes and the fuel cap. The remote control also has a function that activates the main power switch, logs in a specific operator and turns on the lights. In addition to this, the remote control can be used to control the diesel heater.



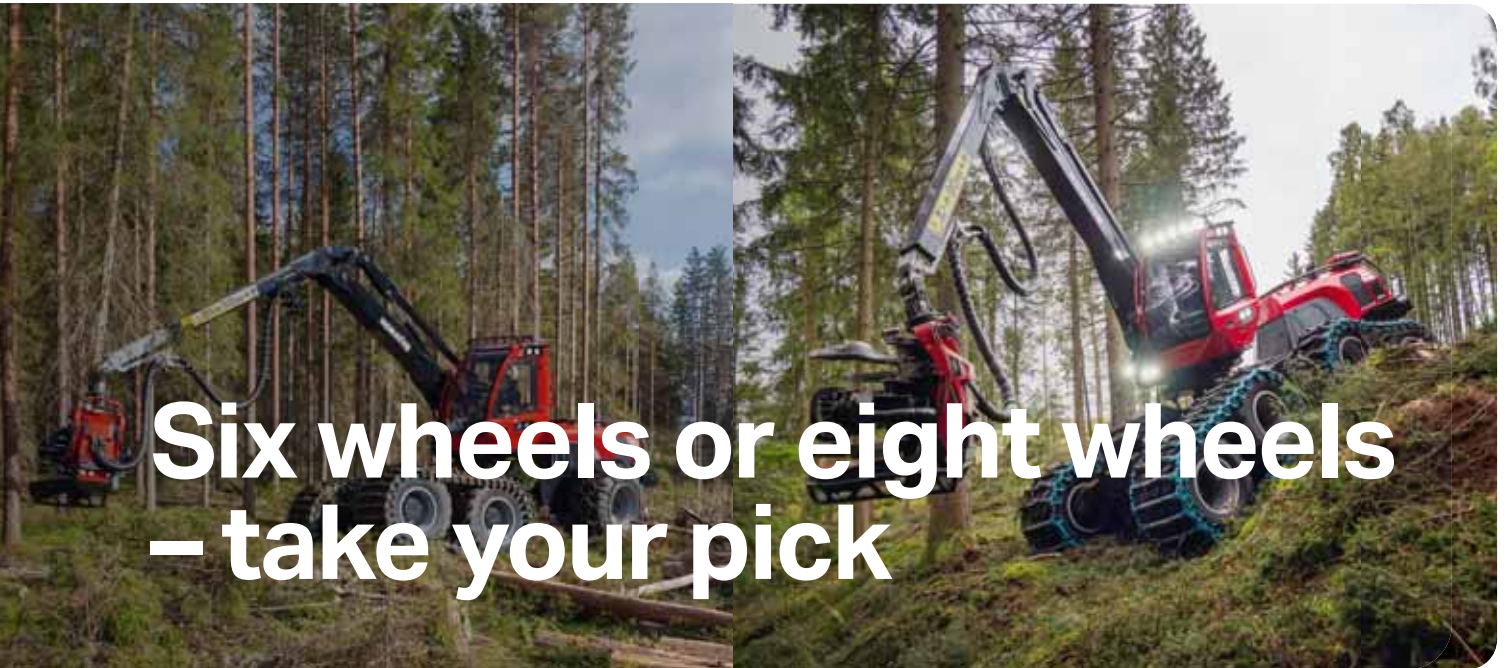
### Keep your feet warm

The optional underfloor heating for the cab makes for a more pleasant and evenly heated work environment, even in winter. It also makes it easier to keep the floor clean and dry.



### Smart Crane for harvesters

Smart Crane automates crane control, and a single joystick movement returns the crane from full extension back to its resting position at the machine. The crane's rapid response and precision make getting the head exactly where you want it a breeze, allowing the operator to work in a relaxed manner. A relaxed operator can maintain constantly high production throughout the day, while still feeling energised at the end of their shift. These are advantages that will be seen in both profitability and the operator's wellbeing.



# Six wheels or eight wheels – take your pick

### Six wheels – an agile and manoeuvrable harvester

Our six-wheeled harvesters are designed for agility and ease of operation. The lower total weight makes the transport between work sites easier and logistics more efficient. The compact design also improves manoeuvrability, allowing the operator to navigate dense forests and tight spaces. And with fewer moving components, maintenance and servicing are simplified, helping to minimise downtime and operational costs.

This makes the six-wheeled harvester an excellent choice for areas where flexibility and efficiency are key.

- **Lower total weight – Easier to transport and less strain on the ground.**
- **Great manoeuvrability – More agile in tight spaces and easier to navigate.**
- **Less power steering required – Reduces energy consumption and operator effort.**
- **Fewer moving components – Simplifies maintenance and service.**
- **Ideal for final felling – Well-suited for harvesting mature stands efficiently.**

### Eight wheels – a stable harvester with low ground pressure

Our eight-wheeled harvesters combine a swing axle with a bogie, resulting in dual suspension systems for the rear axle. This innovative design gives the machine both a lower centre of gravity and more ground contact, making it particularly stable in rough terrain and excellent for climbing steep slopes. The increased number of wheels also distributes the machine's weight more evenly, reducing ground pressure and minimising the impact on soft or sensitive soil.

This makes the eight-wheeled harvester an excellent choice for challenging conditions where stability and minimal ground disturbance are crucial.

- **Enhanced stability – Lower centre of gravity and increased ground contact.**
- **Superior terrain performance – Excellent for climbing steep slopes.**
- **Lower ground pressure – Minimises impact on soft and sensitive ground.**
- **Dual suspension system – Improved comfort and smoother operation.**
- **Better weight distribution – Reduces strain on the machine and extends component lifespan.**

## Genuine Parts - Keeping your Komatsu truly Komatsu

Genuine Parts are carefully chosen to meet Komatsu's quality standards. We offer original spare parts, accessories, and equipment designed specifically for your Komatsu machine. Each part is developed to work seamlessly with your machine, ensuring reliability and a longer machine life. By choosing genuine parts, you help keep your Komatsu running smoothly for years to come.

Quick access to the right parts is key to maintaining productivity. Our efficient logistics and well-placed warehouses, including a central hub near Stockholm, ensure fast deliveries when you need them most.



Scan the QR code  
for all spare parts  
and accessories



# Smart Forestry

What would it mean to you to always know the smartest route to the timber with the least impact on the forest and well away from waterlogged ground? To be able to prepare tomorrow's work from home so that the right information is available at the start of the working day? Or to be able to allow a service technician to connect to your machine remotely to help you?

Smart Forestry is a platform with development in focus – we are already working on the smart solutions of tomorrow. Smart Forestry gives you access to a collection of digital services that help make the workplace safe, smart, productive and sustainable – regardless of whether you have one or one hundred forest machines. You can keep track of your machines, collaborate with colleagues and make informed decisions based on facts. Smart Forestry currently encompasses three different applications, making it easy to find the best solution for you and your business.

Forestry **Fleet Monitoring** provides you with full control over your machines, the ability to plan harvesting assignments remotely and all the necessary remote control functions – including support.

Smart Forestry **Vision** enables you to work with information layers directly on the map, share information with other machines at the work site and view all production in real time.

Smart Forestry **Precision** gives you access to a new level of possibilities in the forest, with the precise position of the machine used for functions that simplify your working day in various ways.



## Which applications are right for you?

### Smart Forestry Fleet Monitoring

- ✓ Plan for better results
- ✓ Work from anywhere with ease
- ✓ Access all machine data in one place
- ✓ Compare fuel consumption and production
- ✓ Create monthly reports with ease
- ✓ Get remote support and updates

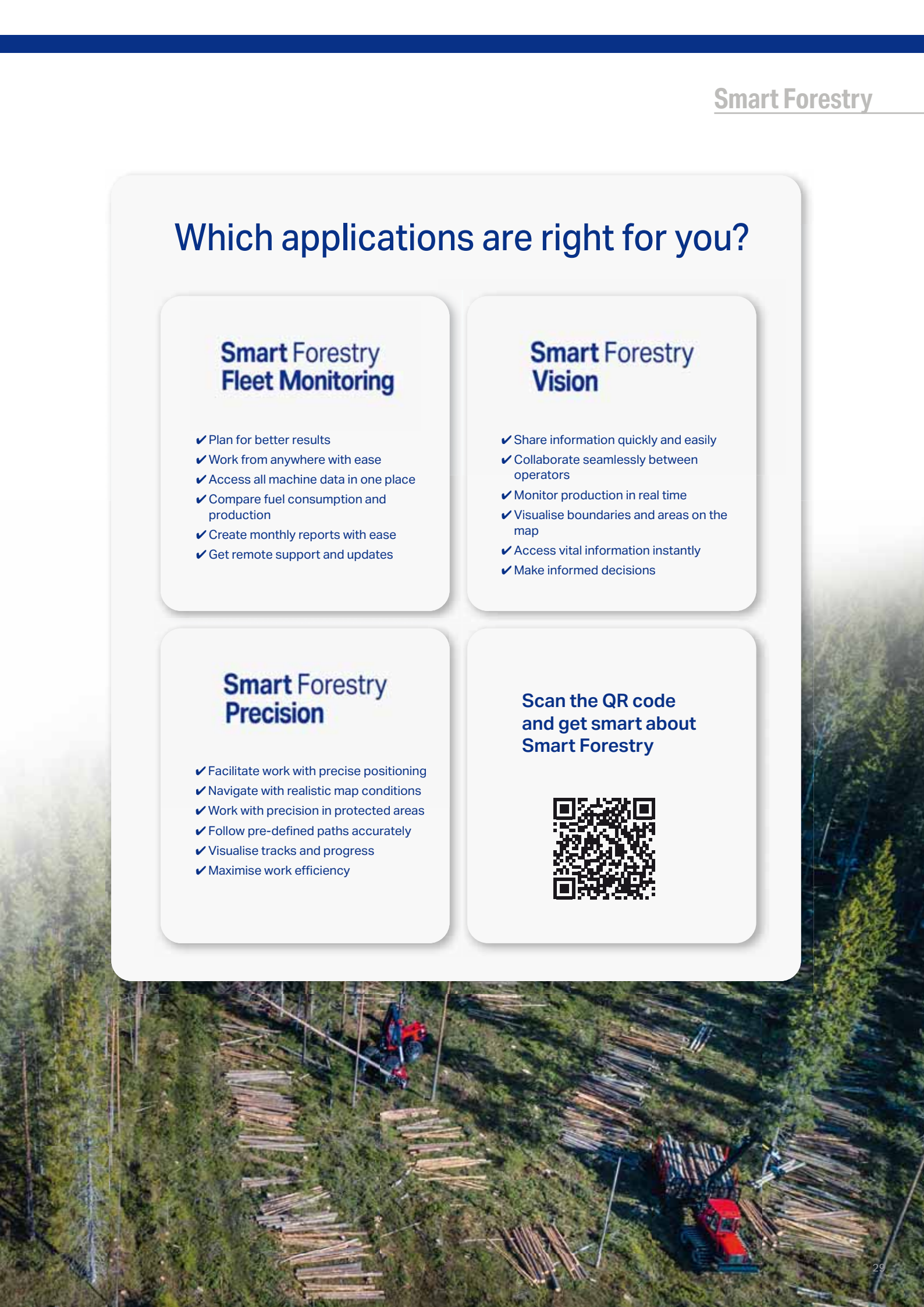
### Smart Forestry Vision

- ✓ Share information quickly and easily
- ✓ Collaborate seamlessly between operators
- ✓ Monitor production in real time
- ✓ Visualise boundaries and areas on the map
- ✓ Access vital information instantly
- ✓ Make informed decisions

### Smart Forestry Precision

- ✓ Facilitate work with precise positioning
- ✓ Navigate with realistic map conditions
- ✓ Work with precision in protected areas
- ✓ Follow pre-defined paths accurately
- ✓ Visualise tracks and progress
- ✓ Maximise work efficiency

Scan the QR code  
and get smart about  
Smart Forestry



# Komatsu Harvesters



**901**

Agile thinning harvester



**901XC**

Stable regardless of the terrain



**911**

Flexible and versatile

<b>Technical specifications</b>			
Weight from	17,600 kg	20,210 kg	17,850 kg
Gross lifting torque	198 kNm	198 kNm	198–230 kNm
Tractive force	164 kN	184 kN	167–189 kN
Driving speed, approx.	0–24 km/h	0–21,5 km/h	0–24 km/h
Fuel tank	370 l	415 l	370–405 l
Engine power	170 kW DIN at 1,900 rpm	170 kW DIN at 1,900 rpm	170 kW DIN at 1,900 rpm
Crane reach options	10/11 m	10/11 m	8,7/10/11 m
Working hydraulics flow capacity	375 l/min at 1500 rpm	375 l/min at 1500 rpm	375 l/min at 1500 rpm
<b>Recommended head</b>			
S82	✓	✓	✓
S92	✓	✓	✓
C93	✓	✓	✓
C124		✓	✓
S132			✓
C144			✓
C164			
S172			



### 931

Powerful all-round machine



### 931XC

Stability and low ground pressure



### 951

Powerful for final logging



### 951XC

Excellent climbing ability

19,880 kg	21,900 kg	22,790 kg	23,275 kg
230 kNm	230 kNm	275 kNm	275 kNm
189 kN	200 kN	222 kN	242 kN
0–21 km/h	0–20 km/h	0–24 km/h	0–21 km/h
405 l	480 l	529 l	466 l
190 kW DIN at 1,850 rpm	190 kW DIN at 1,850 rpm	214 kW DIN at 1,850 rpm	214 kW DIN at 1,850 rpm
8,7/10/11 m	8,7/10/11 m	8,7/10,3 m	8,7/10,3 m
495 l/min at 1500 rpm	495 l/min at 1500 rpm	495 l/min at 1500 rpm	495 l/min at 1500 rpm
✓	✓		
✓	✓		
✓	✓	✓	✓
✓	✓	✓	✓
✓	✓	✓	✓
	✓	✓	✓
		✓	✓

Scan the QR code for all features and specifications:





**KOMATSU**

[komatsuforest.com](http://komatsuforest.com)