

KOMATSU®

WA500-8

Tier 4 Final Engine

WHEEL LOADER



Photos may include optional equipment.

NET HORSEPOWER

353 HP @ 1900 rpm
263 kW @ 1900 rpm

OPERATING WEIGHT

76,897 – 77,856 lb
34,880 – 35,315 kg

BUCKET CAPACITY

5.9 – 8.2 yd³
4.5 – 6.3 m³

WALK-AROUND

WA500-8



Photos may include optional equipment.

NET HORSEPOWER

353 HP @ 1900 rpm
263 kW @ 1900 rpm

OPERATING WEIGHT

76,897 – 77,856 lb
34,880 – 35,315 kg

BUCKET CAPACITY

5.9 – 8.2 yd³
4.5 – 6.3 m³



PERFORMANCE, DURABILITY AND FUEL ECONOMY

Large capacity torque converter with lock-up provides:

- Quick acceleration
- Lock-up in 2nd, 3rd and 4th gear

Komatsu SmartLoader Logic helps reduce fuel consumption with no decrease in production.

A powerful **Komatsu SAA6D140E-7 engine** provides a net output of 264 kW **357 HP** with up to 5% improved fuel consumption. This engine is EPA Tier 4 Final emissions certified.

Komatsu Variable Geometry Turbocharger (KVGt) uses a hydraulic actuator to provide optimum air flow under all speed and load conditions.

Komatsu Diesel Particulate Filter (KDPF) and Selective Catalytic Reduction (SCR) systems reduce particulate matter and NO_x, while providing automatic regeneration that does not interfere with daily operation.

Fluid neutral or better

Consumption of fuel and diesel exhaust fluid (DEF) is less than or equivalent to the amount of fuel consumed by the prior model.

Cooling

- Hydraulically driven, variable-speed fan
- Auto-reversing fan is standard
- Wider core coolers resist clogging
- Swing-out fan for easy cleaning

Remote boom and bucket positioners allow kickouts to be set from inside the cab.

Variable displacement piston pumps with Closed-Center Load Sensing System (CLSS) provide quick response and smooth operation to maximize productivity.

Rearview monitoring system (standard)

Advanced diagnostic system continuously monitors machine operation and vital systems to identify machine issues and assist with troubleshooting.

Transmission Mode Select System (3 modes) allows shifting mode to be matched more efficiently to varying work applications.

Enhanced working environment:

- New high capacity, heated, air suspension seat,
- Seat mounted EPC controls with F-N-R switch
- Two 12V power outlets

Redesigned Komatsu bucket is larger capacity, fills more easily, and retains material better for increased productivity.

New front fender is changed from steel to composite material for resistance to scratches and impact.



Full rear fenders (standard) swing open for easy access to maintenance points.

Large LCD color monitor panel:

- 7" high resolution, multi-color screen is easy to read
- Integrated load meter system displays payload data directly on the monitor panel
- Includes an ecology gauge and provides "Ecology Guidance" for greater fuel efficiency
- Onboard diagnostics do not require use of a laptop computer
- Easy-to-navigate menus allow operators to change settings, review machine performance records and track periodic maintenance items.

Komatsu Auto Idle Shutdown helps reduce idle time and operating costs.

External mounting of engine air filter (above rear LH fender)

provides easy access for maintenance.

KOMTRAX® equipped machines can send location, Service meter readings and operation maps to a secure website or smart phone utilizing wireless technology. Machines also relay error codes, cautions, maintenance items, fuel & Diesel Exhaust Fluid (DEF) levels, payload data and much more.

Battery disconnect switch allows a technician to disconnect the power supply before servicing the machine.

Operator Identification System can track machine operation for up to 100 operators.

PERFORMANCE FEATURES

KOMATSU NEW ENGINE TECHNOLOGIES

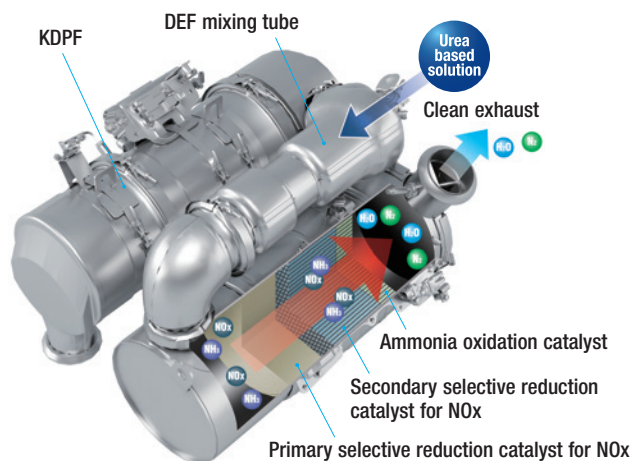
New Tier 4 Final Engine

The Komatsu SAA6D140E-7 engine is EPA Tier 4 Final emissions certified and provides exceptional performance, while reducing fuel consumption. Based on Komatsu proprietary technologies developed over many years, this new diesel engine reduces nitrogen oxides (NOx) by more than 80%, when compared to Tier 4 interim levels.

Technologies Applied to New Engine

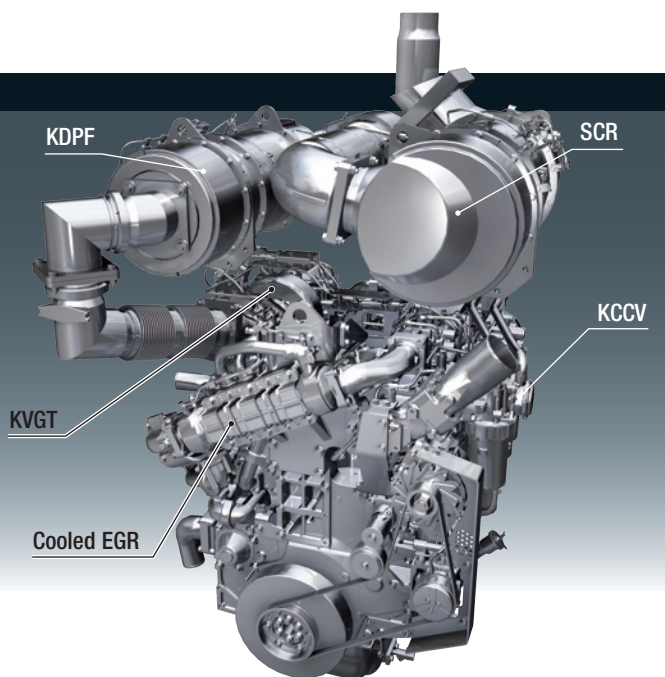
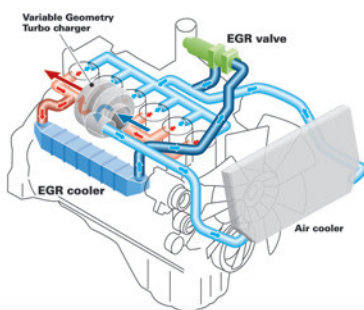
Heavy-Duty Aftertreatment System

This new system combines a Komatsu Diesel Particulate Filter (KDPF) and Selective Catalytic Reduction (SCR). The SCR NOx reduction system injects the correct amount of Diesel Exhaust Fluid (DEF) at the proper rate, thereby decomposing NOx into non-toxic water vapor (H₂O) and nitrogen gas (N₂).



Heavy-Duty Cooled Exhaust Gas Recirculation (EGR) System

The system recirculates a portion of exhaust gas into the air intake and lowers combustion temperatures, thereby reducing NOx emissions. EGR gas flow has been decreased for Tier 4 Final with the addition of SCR technology. The system dramatically reduces NOx, while helping cut fuel consumption below Tier 4 Interim levels.

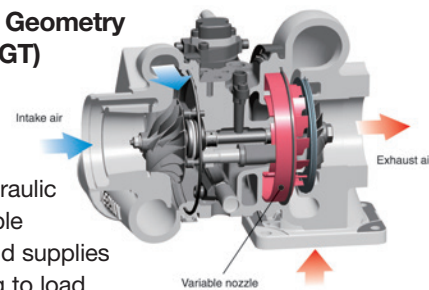


Advanced Electronic Control System

The electronic control system performs high-speed processing of all signals from sensors installed in the vehicle, providing total control of equipment. Engine condition information is displayed on the monitor inside the cab, providing necessary information to the operator. Additionally, managing the information via KOMTRAX helps customers keep up with required maintenance.

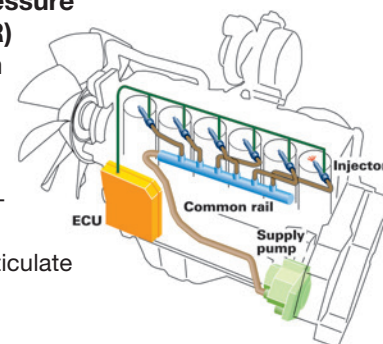
Komatsu Variable Geometry Turbocharger (KVGT) System

The KVGT system features proven Komatsu design hydraulic technology for variable control of air-flow and supplies optimal air according to load conditions. The upgraded version provides better exhaust temperature management.



Heavy-duty High-Pressure Common Rail (HPCR) fuel injection system

The system is specifically designed to achieve the optimal injection of fuel for near-complete combustion, which helps reduce particulate matter emissions.



Redesigned Komatsu Bucket

The redesigned Komatsu bucket provides improved productivity. The bucket has a new shape, with a deeper heel and inclined floor that make the bucket easier to fill and retain material. The capacity of the standard bucket is also increased.



Komatsu SmartLoader Logic

The WA500-8 features Komatsu SmartLoader Logic, which controls engine torque to match machine demands. For example, engine torque needs are higher for digging in V-shape loading, but lower when driving with an empty bucket. This system optimizes the engine torque for all applications to minimize fuel consumption. Komatsu SmartLoader Logic functions automatically and doesn't interfere with operation, saving fuel without decreasing production.

Large-capacity Torque Converter

The Komatsu-designed power train features a large capacity torque converter for optimum efficiency. The WA500-8 has improved efficiency in V-shape loading applications because the increased tractive effort does not require full throttle. The large capacity torque converter allows the loader to up-shift gears faster for improved acceleration and hill climbing ability. The WA500-8 achieves high gear ranges and maintains high travel speed when working in load-and-carry applications. In most applications, production is increased and fuel consumption is reduced, resulting in improved fuel efficiency.

Enhanced Lock-up

The Komatsu designed torque converter with lock-up is standard on the WA500-8. The lock-up function activates in 2nd, 3rd and 4th gears. The lock-up torque converter is effective for both load and carry applications and V-shape loading in lower gears. Komatsu SmartLoader Logic reduces the clutch engagement shock of lock-up by controlling engine torque. The lock-up torque converter, combined with Komatsu SmartLoader Logic, results in low fuel consumption and high travel speeds in load and carry, and even some V-cycle loading applications.

Dual-mode Engine Power Select System

This wheel loader offers two selectable operating modes — Power (P) and Economy (E).

- P Mode: This mode provides maximum power output for hard- digging operation or hill climbing.
- E Mode: This mode provides maximum fuel efficiency for general loading.



- 1 Dual mode engine power selection switch
- 2 Transmission shift mode selector switch
- 3 Torque converter lock-up switch

Automatic Transmission with Mode Select System

This operator-controlled system allows the operator to select manual shifting or two levels of automatic shifting (low, and high). Auto L mode is for fuel-saving operation, with the gear-shift timing set at lower speeds than Auto H mode.

Closed-Center Load Sensing System (CLSS) Variable Displacement Piston Pump

The variable displacement piston pump, combined with the Closed-Center Load Sensing System (CLSS), delivers hydraulic flow just as the job requires, preventing wasted hydraulic flow. Minimized loss contributes to better fuel economy.

Komatsu Auto Idle Shutdown

In order to reduce unwanted idle time, Komatsu offers Komatsu auto idle shutdown. This function will shut the engine off and apply the parking brake and hydraulic lock after a preset idle time limit. This time limit can be set by the operator or service technician and may range from three to 60 minutes. It is also possible for the operator to deactivate this function.



OPERATOR ENVIRONMENT



New Operator Seat with Electronic Pilot Control (EPC) Levers

A new standard, heated, air-suspension seat provides enhanced support on rough roads and dampens machine vibrations, providing a more comfortable ride for the operator. An EPC-lever console is built into, and moves with, the seat. The angle of the armrest is fully adjustable for optimum operator comfort. A secondary F-N-R switch is incorporated in to work equipment lever configurations.



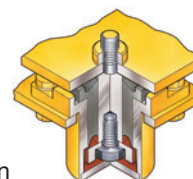
Tiltable / Telescopic Steering Wheel

The operator can tilt and telescope the steering wheel to allow maximum comfort and control. The two-spoke steering wheel allows maximum visibility of the monitor panel and the forward work environment.



Low Noise Design

Operator's ear noise level : 72 dB(A)
Dynamic noise level (outside): 109 dB(A)



The large ROPS/FOPS cab is mounted with Komatsu's unique viscous mounts. The low-noise engine, hydraulically-driven fan, and hydraulic pumps are mounted with rubber cushions. The cab sealing is improved to provide a quiet, low-vibration, low dust and comfortable operating environment.

Mono-lever with Integrated 3rd Spool Control (Optional)

The mono-lever allows the operator to control work equipment and the optional 3rd spool for the thumb increases ease of operation. The 3rd spool valve operates in either continuous or proportional flow modes. The mono-lever also includes a F-N-R switch.

Joystick/Wheel Steering Control System (optional)

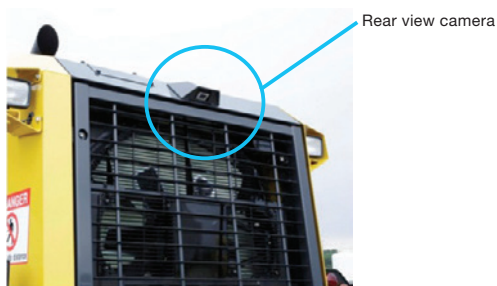
allows steering and directional travel to be controlled by wrist and finger control to minimize operator fatigue.





Standard Rear View Monitoring System

The dedicated, full-color monitor on the right side of the cab provides the operator with a rear view of the machine. This monitor can be always on or only on when the loader shifts into reverse. Guidelines provide the operator with visual cues for the width of the loader.



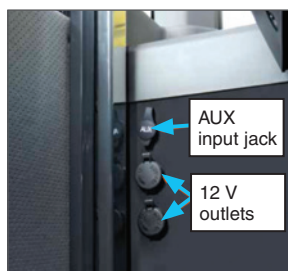
Engine Shutdown Secondary Switch

The engine stop switch enables machine shutdown when accessing the key switch is not possible.



Auxiliary Input (MP3 Jack) 12 V Outlets

An Aux input for audio devices is standard, as well as two 12 volt outlets. These are all located on the front of the right-hand console.



WORKING ENVIRONMENT



Easy Entry and Exit

The WA500-8 has an inclined ladder with wide steps and hand holds to ease entry and exit from the cab.

Remote Bucket & Boom Positioner

The operator can set the bucket angle and remote boom positioner from the cab. Both upper and lower boom limits are adjustable in the cab with the push of a button. The bucket positioner can store three horizontal settings, allowing the operator to easily change attachments without resetting the bucket level position.

Remote positioner switch
Boom / Bucket



Automatic Kick-down

The WA500-8 has the ability to automatically downshift to F1, eliminating the need for the operator to manually downshift when entering the pile. This can be activated through the monitor.



Electronically Controlled Suspension System

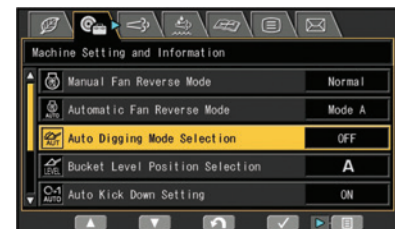
The electronically controlled suspension system, or ride control system, uses an accumulator to minimize boom arm shock, giving the operator a much smoother ride. This reduces operator fatigue and material spillage during load and carry operations. The electronically controlled suspension system is speed sensitive, meaning the boom won't move during low speed digging. This feature is standard on the WA500-8.

Mono Lever With Integrated 3rd Spool Control (option)

The mono lever option has been designed for improved ergonomics and comfort. When equipped with the optional 3rd spool valve, it allows the operator to control the 3rd spool with the thumb. The 3rd spool valve can be operated in either continuous or proportional flow modes. The mono lever also includes an F-N-R switch.

Automatic Digging System

The new automatic digging system actuates the bucket tilt and lifting operations by sensing the pressure applied to the work equipment. This system can alleviate operator's fatigue and optimize bucket load. This system is activated through the LCD color monitor panel.



High Resolution 7-inch Color LCD Monitor

The 7-inch color TFT-LCD monitor can display maintenance information, operational records, ecology-guidance records and other machine data. The switch panel is used to select screens and adjust air conditioner and environmental settings.

Machine monitor

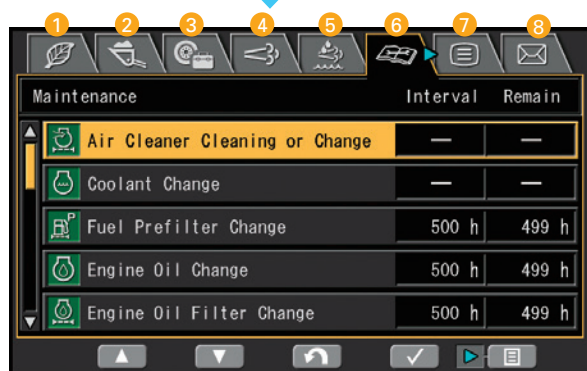
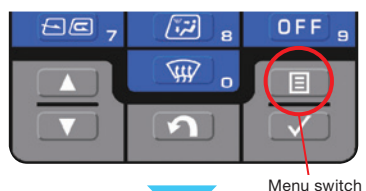
- | | |
|---------------------------|---|
| 1 LCD unit | 8 Engine coolant temperature gauge |
| 2 LED unit | 9 Hydraulic oil temperature gauge |
| 3 Engine tachometer | 10 Torque converter oil temperature gauge |
| 4 Speedometer | 11 Fuel gauge |
| 5 Ecology gauge | 12 Message pilot lamp |
| 6 Air conditioner display | 13 Pilot lamps |
| 7 Shift indicator | 14 DEF level gauge |

Switch panel

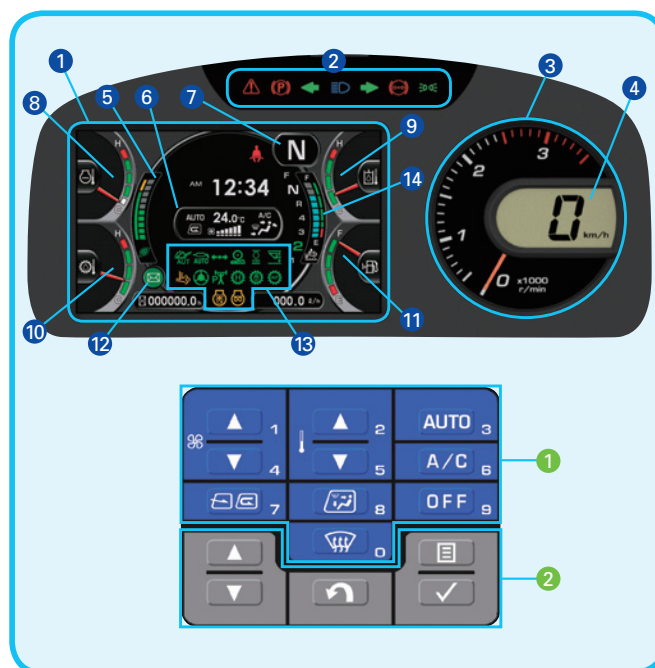
- | | |
|--|---------------------|
| 1 Air conditioner switches / Numeral key pad | 2 Function switches |
|--|---------------------|

Visual User Menu

Pressing the menu button on the switch panel accesses the user-menu screen. The menus are grouped by function, with easy-to-understand, intuitive icons for easier machine operation.



- | |
|---------------------------------------|
| 1 Energy saving guidance |
| 2 Load-meter setting (optional) |
| 3 Machine settings |
| 4 Aftertreatment devices regeneration |
| 5 SCR information |
| 6 Maintenance |
| 7 Monitor setting |
| 8 Mail check |



Operator Identification Function

An operator identification (ID) code can be set for each operator, and used to manage operation information of individual machines through KOMTRAX. Data sent from KOMTRAX can be used to analyze operation status by operator job, as well as by machine.



Monitor Panel with Troubleshooting Function Minimizes Downtime

Various meters, gauges and warning functions are centrally arranged on the monitor panel. The monitor simplifies start-up inspection and warns the operator with a lamp and buzzer if any abnormalities occur. Warnings are indicated in four levels, which the operator must acknowledge and clear.

Replacement times for oil and filters are also indicated.



MAINTENANCE FEATURES

WA500-8



Side-opening Gull-wing Engine Doors

The large, gull-wing-type engine doors require minimal effort to open and close, thanks to gas assisted struts. The doors make access and daily maintenance easy. Large steps on each side of the frame also enhance accessibility.



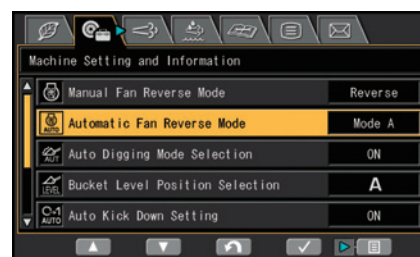
Swing-Out Type Cooling Fan and Wider Core Radiator

The cooling fan swings out for easier cleaning. The coolers feature wider-spaced cooling fins to reduce clogging.



Auto Reversing Fan

The engine cooling fan is hydraulically driven. It can be set to reverse automatically during operation. Fan reverse mode and timing can be controlled through the monitor.



DEF Tank

The DEF tank is easily accessed behind the RH side ladder. A convenient external sight gauge helps prevent overflow and spillage while refilling.



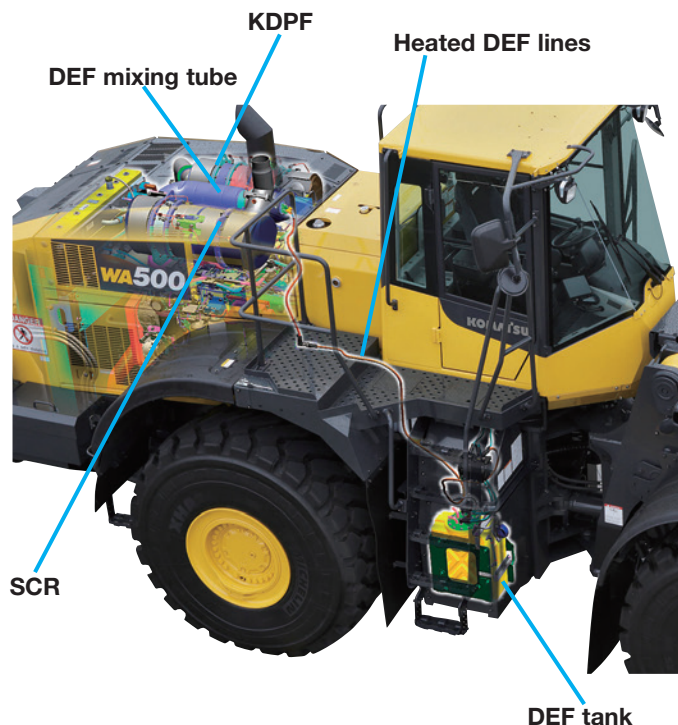
Battery Disconnect Switch

The battery disconnect switch is located on the right side of the machine. This can be used to disconnect power when performing service work on the machine.



Engine Compartment

The WA500-8 engine compartment is designed for easy serviceability. Placement of maintenance items, such as filters, dipsticks, and oil-fill locations are laid out for easy-to-reach, ground-level access.



Rear Full Fenders (Standard)

Full rear fenders are standard on the WA500-8. The plastic rear fenders open outward, keeping the force required to open them low, even when covered with mud or snow. The fenders swing out of the way to give technicians easy access to the engine compartment. Mud flaps are also included on the fenders for additional machine protection.



Cab Air Filter

The inside and outside air filters can be replaced easily without need for tools. The outside filter is located behind a lockable door for security.



Inside air filter

Outside air filter

LED Taillights

LED brake lights and reverse lights provide long bulb life, and excellent visibility.



Engine Air Cleaner

The air cleaner is located on the left-side platform for easy access.



Maintenance Information

“Maintenance time caution lamp” display

When the time before required maintenance dips below 30 hours*, the maintenance-time monitor appears. Pressing the menu switch displays the maintenance screen.

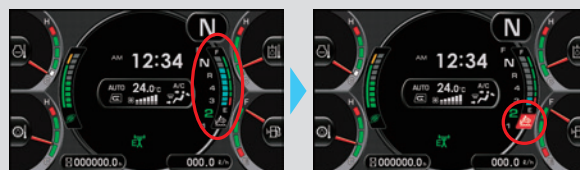
* : The setting can be changed within the range between 10 and 200 hours.



Maintenance screen

Supports DEF level and refill timing

The DEF level gauge is displayed continuously on the monitor panel. In addition, when the refill timing is reached, the DEF-low-level icon appears to alert the operator.



DEF level gauge

DEF low level guidance

KOMATSU PARTS & SERVICE SUPPORT



KOMATSU CARE®

Program Includes:

*The WA500-8 comes standard with complimentary factory scheduled maintenance for the first 3 years or 2,000 Hours, whichever comes first.

Planned Maintenance Intervals at:

500/1000/1500/2000 hour intervals. (250 hr. initial interval for some products) Complimentary Maintenance Interval includes: Replacement of Oils & Fluid Filters with genuine Komatsu Parts, 50-Point inspection, Komatsu Oil & Wear Analysis Sampling (KOWA) / Travel & Mileage (distance set by distributor; additional charges may apply)

Benefits of Using Komatsu CARE

- Assurance of Proper Maintenance with OEM Parts & Service
- Increased Uptime & Efficiency
- Factory Certified Technicians Performing Work
- Cost of Ownership Savings
- Transferable Upon Resale

Complimentary KDPF Exchange

The WA500-8 comes standard with 2 Complimentary KDPF Exchange Units for the first 5 years (unlimited hours). Complimentary KDPF Exchange Units are provided at: The suggested KDPF Exchange Units Service Intervals of 4,500 hours and 9,000 hours during the first 5 years. End User must have authorized Komatsu distributor perform the removal and installation of the KDPF.

Complimentary SCR System Maintenance

The WA500-8 also includes 2 factory recommended services of the Selective Catalytic Reduction (SCR) Diesel exhaust fluid (DEF) system during the first 5 years—no hour limit including:

- Factory recommended DEF tank flush and strainer cleaning at 4,500 hours and 9,000 hours

Komatsu CARE® – Advantage Extended Coverage

- Extended Coverage can provide peace of mind by protecting customers from unplanned expenses that effect cash flow
- Purchasing extended coverage locks in the cost of covered parts and labor for the coverage period and helps turn these into fixed costs

* Certain exclusions and limitations apply. Refer to the customer certificate for complete program details and eligibility. KOMATSU® and Komatsu CARE® are registered trademarks of Komatsu Ltd. | Copyright 2016 Komatsu America Corp.



Komatsu Parts Support

- 24/7/365 to fulfill your parts needs
- 9 parts Distribution Centers strategically located across the U.S. and Canada
- Distributor network of more than 300 locations across U.S. and Canada to serve you
- Online part ordering through Komatsu eParts
- Remanufactured components with same-as-new warranties at a significant cost reduction



Komatsu Oil and Wear Analysis (KOWA)

- KOWA detects fuel dilution, coolant leaks, and measures wear metals
- Proactively maintain your equipment
- Maximize availability and performance
- Can identify potential problems before they lead to major repairs
- Reduce life cycle cost by extending component life

WA500-8

KOMTRAX EQUIPMENT MONITORING

GET THE WHOLE STORY WITH
KOMTRAX®

✓ WHAT

- KOMTRAX is Komatsu's remote equipment monitoring and management system
- KOMTRAX **continuously monitors and records** machine health and operational data
- Information such as fuel consumption, utilization, and a detailed history **lowering owning and operating cost**

✓ WHEN

- Know when your machines are **running or idling** and make decisions that will improve your fleet utilization
- Detailed movement records ensure you know when and where your equipment is moved
- Up to date records allow you to **know when maintenance is due** and help you plan for future maintenance needs

✓ WHERE

- KOMTRAX data **can be accessed virtually anywhere** through your computer, the web or your smart phone
- Automatic alerts keep fleet managers up to date on the latest machine notifications

✓ WHY

- Knowledge is power - **make informed decisions** to manage your fleet better
- Knowing your idle time and fuel consumption will help maximize your machine efficiency
- **Take control of your equipment** - any time, anywhere

✓ WHO

- KOMTRAX is **standard** equipment on all Komatsu construction products



KOMTRAX®

For construction and compact equipment.

KOMTRAX Plus®

For production and mining class machines.

SPECIFICATIONS



ENGINE

Model..... Komatsu SAA6D140E-7*
 Type..... Water-cooled, 4-cycle
 Aspiration..... Variable geometry turbo-charged,
 after-cooled, cooled EGR
 Number of cylinders..... 6
 Bore..... 140 mm **5.51"**
 Stroke..... 165 mm **6.50"**
 Piston displacement..... 15.24 ltr **930 in³**
 Governor..... All-speed, electronic
 Horsepower:
 SAE J1995..... Gross 266 kW **357 HP**
 ISO 9249 / SAE J1349..... Net 263 kW **353 HP**
 Rated rpm..... 1900 rpm
 Fan drive method for radiator cooling.....Hydraulic
 Fuel system..... Direct injection
 Lubrication system:
 Method.....Gear pump, force-lubrication
 Filter.....Full-flow type
 Air cleaner..... Dry type with double elements and
 dust evacuator, high dust indicator

*EPA Tier 4 Final emissions certified



TRANSMISSION

Torque converter..... three-elements, one-stage, two-phase
 Transmission..... Full-powershift, planetary type

Travel speed	Forward*	Reverse*
1st	7.5 km/h 4.7 mph	8.5 km/h 5.3 mph
2nd	12.9 km/h 8.0 mph (13.1 km/h 8.1 mph)	12.9 km/h 8.0 mph (13.0 km/h 8.1 mph)
3rd	22.2 km/h 13.8 mph (23.7 km/h 14.7 mph)	24.7 km/h 15.3 mph (26.6 km/h 16.5 mph)
4th	35.5 km/h 22.1 mph (37.3 km/h 23.2 mph)	38.0 km/h 23.6 mph (38.0 km/h 23.6 mph)

*P-mode Measured with 29.5-25 tires (): Lock-up clutch ON



AXLES AND FINAL DRIVES

Drive system.....Four-wheel drive
 Front..... Fixed, full-floating
 Rear..... Center-pin support, full-floating,
 20° total oscillation
 Reduction gear.....Spiral bevel gear
 Differential gear..... Conventional type
 Final reduction gear..... Planetary gear, single reduction



BRAKES

Service brakes..... Hydraulically actuated,
 wet disc brakes actuate on four wheels
 Parking brake..... Wet disc brake
 Emergency brake..... Parking brake is commonly used



STEERING SYSTEM

Type..... Articulated type, fully-hydraulic power steering
 Steering angle..... 36° (40° to max end stop)
 Minimum turning radius at
 the center of outside tire..... 7050 mm **23' 2"**



HYDRAULIC SYSTEM

Steering system:

Hydraulic pump..... Piston type
 Capacity..... 120 ltr/min **31.7 U.S. gal/min** at rated rpm
 Relief valve setting..... 24.5 MPa 250 kgf/cm² **3,555 psi**
 Hydraulic cylinders:
 Type..... Double-acting, piston type
 Number of cylinders..... 2
 Bore x stroke..... 100 mm x 486 mm **3.9" x 19.1"**

Loader control:

Hydraulic pump..... Piston pump
 Capacity..... 320 ltr/min **84.8 U.S. gal/min** at rated rpm
 Relief valve setting..... 34.3 MPa 350 kgf/cm² **4,980 psi**
 Hydraulic cylinders:

Type..... Double-acting, piston type
 Number of cylinders—bore x stroke:
 Boom cylinder..... 2- 160 mm x 898 mm **6.3" x 35.4"**
 Bucket cylinder..... 1- 185 mm x 675 mm **7.3" x 26.6"**

Control valve..... 2-spool type

Control positions:

Boom..... Raise, hold, lower, and float
 Bucket..... Tilt-back, hold, and dump
 Hydraulic cycle time (rated load in bucket)
 Raise..... 7.2 s
 Dump..... 1.7 s
 Lower (Empty)..... 4.2 s

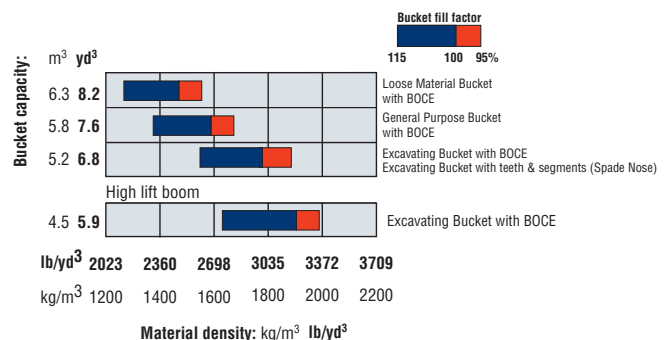


SERVICE REFILL CAPACITIES

Cooling system..... 110 ltr **29.1 U.S. gal**
 Fuel tank..... 473 ltr **124.9 U.S. gal**
 Engine..... 37 ltr **9.8 U.S. gal**
 Hydraulic system..... 337 ltr **89.0 U.S. gal**
 Axle (each front and rear)..... 95 ltr **25.1 U.S. gal**
 Torque converter and transmission..... 71 ltr **18.8 U.S. gal**
 DEF tank..... 36 ltr **9.5 U.S. gal**



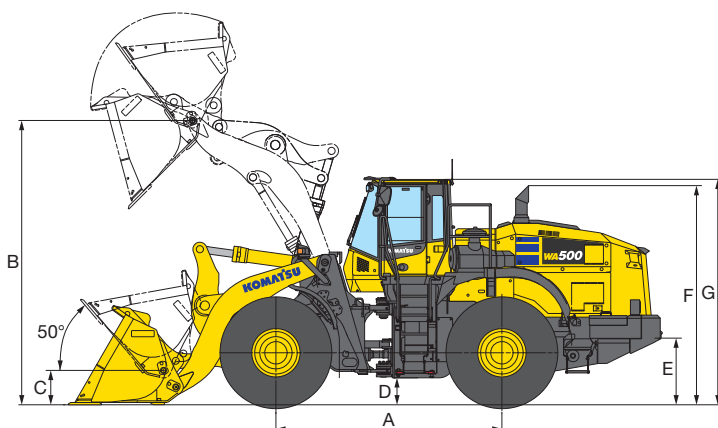
BUCKET SELECTION GUIDE





DIMENSIONS

Measured with 29.5-25-22PR (L3) tires



Tread width (center of tread to center of tread)	2400 mm	7'10"
Width over tires	3190 mm	10'6"
A Wheelbase	3780 mm	12'5"
B Hinge pin height, max. height	Standard Boom 4755 mm High Lift Boom 5165 mm	15'7" 16'11"
C Hinge pin height, carry position	Standard Boom 575 mm High Lift Boom 700 mm	1'11" 2'4"
D Ground clearance	450 mm	1'6"
E Hitch height	1115 mm	3'8"
F Overall height, top of the stack	3665 mm	12'0"
G Overall height, ROPS cab	3785 mm	12'5"

	Standard Boom			High Lift Boom
	General Purpose Bucket	Excavating Bucket	Loose Material Bucket	Excavating Bucket
	Straight Edge Bolt-on Cutting Edge	Straight Edge Bolt-on Cutting Edge	Straight Edge Bolt-on Cutting Edge	Straight Edge Bolt-on Cutting Edge
Bucket capacity: heaped	5.8 m ³ 7.6 yd³	5.2 m ³ 6.8 yd³	6.3 m ³ 8.2 yd³	4.5 m ³ 5.9 yd³
struck	4.9 m ³ 6.4 yd³	4.2 m ³ 5.5 yd³	5.3 m ³ 6.9 yd³	3.7 m ³ 4.8 yd³
Bucket width	3400 mm 11'2"	3400 mm 11'2"	3400 mm 11'2"	3400 mm 11'2"
Bucket weight	3210 kg 7,077 lb	3055 kg 6,735 lb	3485 kg 7,683 lb	2885 kg 6,360 lb
Dumping clearance, max. height and 45° dump angle* (H)	3275 mm 10'9"	3395 mm 11'2"	3210 mm 10'6"	3890 mm 12'9"
Reach at max. height and 45° dump angle*	1525 mm 5'0"	1400 mm 4'7"	1585 mm 5'2"	1435 mm 4'8"
Reach at 2130 mm 7' clearance and 45° dump angle	2315 mm 7'7"	2215 mm 7'3"	2350 mm 7'8"	2585 mm 8'6"
Reach with arm horizontal and bucket level	3295 mm 10'10"	3120 mm 10'3"	3385 mm 11'11"	3385 mm 11'1"
Operating height (fully raised)	6470 mm 21'3"	6415 mm 21'1"	6540 mm 21'5"	6715 mm 22'2"
Overall length (bucket on ground)	9945 mm 32'8"	9770 mm 32'1"	10035 mm 32'11"	10130 mm 33'3"
Loader clearance circle (bucket at carry, outside corner of bucket)	16450 mm 54'0"	16360 mm 53'8"	16550 mm 54'4"	16630 mm 54'7"
Digging depth: 0°	135 mm 5"	135 mm 5"	135 mm 5"	210 mm 8"
10°	440 mm 1'5"	410 mm 1'4"	455 mm 1'6"	470 mm 1'7"
Static tipping load: straight	27280 kg 60,142 lb	27380 kg 60,363 lb	27050 kg 59,635 lb	23070 kg 50,861 lb
40° full turn	24740 kg 54,542 lb	24840 kg 54,763 lb	24510 kg 54,035 lb	20820 kg 45,900 lb
Breakout force	240 kN 24470 kgf 53,947 lb	268 kN 27300 kgf 60,185 lb	227 kN 23200 kgf 51,150 lb	286 kN 29140 kgf 64,245 lb
Operating weight	35040 kg 77,250 lb	34885 kg 76,908 lb	35315 kg 77,856 lb	34880 kg 76,897 lb

* At the end of tooth or B.O.C.E.

All dimensions, weights, and performance values based on SAE J732c and J742b standards.

Static tipping load and operating weight shown include lubricant, coolant, full fuel tank, ROPS cab, and operator.

Machine stability and operating weight affected by counterweight, tire size, and other attachments.

Apply the following weight changes to operating weight and static tipping load.



WEIGHT CHANGES

Tires or attachments	Operating weight		Tipping load straight		Tipping load full turn	
	kg	lb	kg	lb	kg	lb
Remove additional counterweight	-900	-1984	-1860	-4101	-1570	-3461



STANDARD EQUIPMENT

- Alternator, 90 A
- Auto shift transmission with mode select system
- Automatic digging system
- Automatic hydraulic-driven fan with automatic reverse rotation
- Back-up alarm
- Batteries, 160 Ah/12 V (2)
- Battery disconnect
- Boom kick-out, in-cab adjustable
- Bucket positioner, in-cab adjustable, 3 positions
- Color rear view camera and monitor
- Counterweight, standard and additional
- Electronically Controlled Suspension System (ECSS)
- Engine, Komatsu SAA6D140E-7 diesel
- Engine shut-off system, electric
- Engine shutdown secondary switch
- EPC fingertip controls with F-N-R switch, two levers
- Equipment Management Monitoring System (EMMS)
 - Lights (central warning, brake oil pressure, engine oil pressure, parking brake, cooling fan reverse, KDPF restriction, seat belt caution, Komtrax message)
 - Gauges (Engine water temperature, ecology, Fuel level, DEF levels, Hydraulic oil temperature, speedometer/tachometer)
- Front fenders
- Fuel pre-filter with water separator
- Horn, electric
- Komatsu SmartLoader Logic
- Komatsu Auto Idle Shutdown
- KOMTRAX® Level 5
- Lift cylinders and bucket cylinder
- Lights
 - Back-up light, LED
 - Stop and tail light, LED
 - Turn signal, two front and two rear with hazard switch
 - Working lights, halogen, two front cab mount
 - Working lights, halogen, two front fender mount
 - Working lights, halogen, two rear
- Load meter*
- Loader linkage with standard lift arm
- Lock-up torque converter
- Parking brake, electric
- Radiator, wider core
- Radiator mask, swing out
- Rear full fenders
- Rear view mirrors, outside (2) inside (2)
- Rims for 29.5-25 tires
- ROPS/FOPS Cab Level 2
 - 2 x DC12V electrical outlets
 - Ashtray
 - Auto air conditioner
 - Cigarette lighter, 24V
 - Color LCD/TFT multi-monitor
 - Cup holder
 - Floor mat
 - Operator seat, reclining, air suspension type, heated
 - Radio, AM/FM with AUX input jack
 - Rear defroster, electric
 - Seatbelt, two-point retractable, 76mm 3" width
 - Space for Lunch box
 - Steering wheel, tilt and telescopic
 - Sun visor, front window
 - Windshield washer and wiper, front with intermittent
 - Windshield washer and wiper, rear
- Service brakes, wet disc type
- Starting motor, 11 kW
- Transmission, four forward and four reverse
- Two-spool valve for boom and bucket control
- Vandalism protection kit

* Restrictions apply based on machine configuration. Load meter is not available for machines with MF monolever, 3rd spool hydraulic arrangement or coupler. Consult your local Komatsu distributor for details.



OPTIONAL EQUIPMENT

- Advanced joystick steering system
- Auxiliary steering (SAE)
- Brake cooling system
- Engine pre-cleaner with extension
- Graco autolube system
- High lift boom
- Joystick/wheel steering control system
- Limited slip differential (F&R)
- Mono-lever loader control with transmission F-N-R switch
- Power train guard
- Three-spool valve with lever and piping
- Various tire options, radial and bias
- Various bucket options



AESS891-02

©2016 Komatsu America Corp.

Printed in USA

AD05(5M)OTP

02/17 (EV-2)

KOMATSU®

Note: All comparisons and claims of improved performance made herein are made with respect to the prior Komatsu model unless otherwise specifically stated.

www.komatsuamerica.com

Komatsu America Corp. is an authorized licensee of Komatsu Ltd. Materials and specifications are subject to change without notice

KOMATSU®, Komatsu Care® and KOMTRAX® are registered trademarks of Komatsu Ltd.

All other trademarks and service marks used herein are the property of Komatsu Ltd., Komatsu America Corp. or their respective owners or licensees.

WA500-8