



V-series and H-series hydraulic breakers



Photo may include optional equipment

V-series

Operating weight: 3,197-7,562 lbs. (1,450-3,430 kg)

Machine class: 18-50 metric tons

Komatsu carriers: PC210-PC490

H-series

Operating weight: 804.7-7,189.3 lbs. (365-3,261 kg)

Machine class: 4-60 metric tons

Komatsu carriers: PC78-PC490

Hydraulic breakers

You can rely on long-lasting performance no matter what conditions you're handling with hydraulic breakers designed for dependability, efficiency and ease of maintenance. The V-series and H-series include many standard features, such as automatic greasing, advanced blank firing protection, swivel hose couplings and heavy-duty housing.

V-series

- 100% hydraulic fired
- Fully automatic variable speed
- A high production ratio in any application



V-series

Operating weight: 3,197-7,562 lbs. (1,450-3,430 kg)

Machine class: 18-50 metric tons

Komatsu carriers: PC210-PC490

H-series

- 100% hydraulic fired
- Accumulator-type
- Compact range: light, simple and built for reliability
- Heavy range: powerful, two-speed



H-series

Operating weight: 804.7-7,189.3 lbs. (365-3,261 kg)

Machine class: 4-60 metric tons

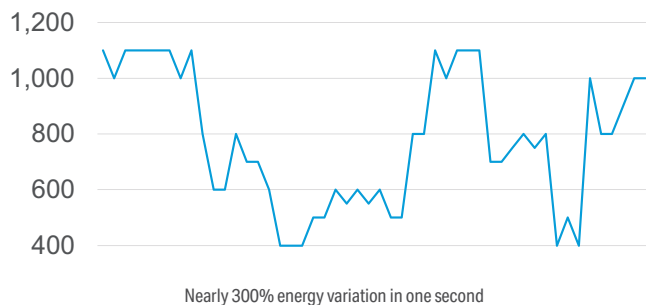
Komatsu carriers: PC78-PC490

V-series



High productivity and low cost per ton

Maximize performance on the job site with breakers that fully modulate their impact force and frequency to match the application's requirements, with minimal wasted energy and therefore a higher operating efficiency. An innovative energy recovery valve further improves this efficiency. As with the H-series, many features, such as automatic greasing, advanced blank firing protection, swivel hose couplings and heavy-duty housing, are standard.



Models: 3

Operating weight: 3,197-7,562 lbs. (1,450-3,430 kg)

Machine class: 18-50 metric tons

Komatsu carriers: PC210 to PC490

Oil flow: 31.7-84.5 gp (120-320 L/min)

Tool diameter: 4.8-6.7 in (122-170 mm)

Fully variable technology

Depending on the application's hardness, V-series breakers automatically select the optimal piston stroke length and speed. By adjusting to either hard material, with long and powerful strokes, or to softer material, with shorter, faster strokes, high production output is consistently achieved, with little wasted impact energy.

H-series

Exceptional impact energy

Bring outstanding impact energy to your job site with an accumulator-type hydraulic breaker effective in a variety of rock and concrete demolition applications. This fully hydraulic breaker is designed with features to enhance output power and efficiency and prevent overflow.



An ace up their sleeve

Eight models join the Komatsu hydraulic breaker range. Based on accumulator-type technology, these breakers are designed to deliver consistent impact power over a wide range of applications.

Compact excavator range

Three breakers, from 804.7 to 1,097.9 pounds (365 to 498 kg), cover the utility and mini excavator segment. These breakers are designed with a compact, light body, which can improve machine stability and operator visibility. The inside is simple and reliable: no tie rods, but with high-quality components, automatic pressure regulation, high back pressure tolerance and blank firing protection.

Large excavator

Dual-mode breakers adapt to various rock types with two working positions to provide the right frequency and energy per blow. They automatically start in high power, low frequency and shift to low power, high frequency as material starts to fracture. This two-speed feature provides advanced anti-blank fire protection designed to extend hammer life by reducing stress on tie rods, tool retainers and other components.

Automatic greasing system

Standard on all JMHB130H and all larger models.



Models: 8

Operating weight: 804.7-7,189.3 lbs. (365-3,261 kg)

Machine class: 4-60 metric tons

Komatsu carriers: PC78 to PC490

Oil flow: 14.5-84.5 gp (55-320 L/min)

Tool diameter: 3-7 in (76-175 mm)

Model listing

V-series hydraulic breakers

Model		JMHB230V	JMHB370V	JMHB470V
Operating weight	lbs. (kg)	3,196.7 (1,450)	5,615.2 (2,547)	7,561.9 (3,430)
Oil flow (min-max)	gpm (L/min)	31.7-45 (120-170)	46.7-70 (180-265)	63.4-84.5 (240-320)
Operating pressure	PSI (MPa)	1,958 (13.5)	2,393 (16.5)	2,393 (16.5)
Impact rate	bpm	285-1,050	345-1,160	330-1,045
Variable speeds		15	15	15
Automatic greasing		Standard	Standard	Standard
Tool diameter	in (mm)	4.8 (122)	5.9 (150)	6.7 (170)
Max. back pressure	PSI (MPa)	174 (1.2)	116 (0.8)	174 (1.2)
Carrier size	Metric ton	18-35	27-47	35-50
Komatsu carriers available in U.S. market		PC210LC PC220LC PC228USLC PC238USLC PC240LC PC270LC PC290LC	PC360LC PC390LC	PC490LC

H-series hydraulic breakers

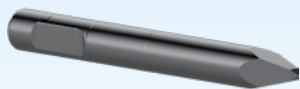
Model		JMHB70H	JMHB80H	JMHB100H	JMHB130H	JMHB170H	JMHB220H	JMHB360H	JMHB460H
Operating weight (with bracket cap and tool)	lbs. (kg)	804.7 (365)	981.1 (445)	1,097.9 (498)	1,609.4 (730)	2,469.2 (1,120)	4,153.5 (1,884)	5,668.1 (2,571)	7,189.3 (3,261)
Oil flow (min-max)	gpm (L/min)	14.5-26.4 (55-100)	18.5-31.7 (70-120)	19.8-33 (75-125)	21.1-37 (80-140)	26.4-39.6 (100-150)	37-58.1 (140-220)	46.2-66 (175-250)	66-84.5 (250-320)
Operating pressure	PSI (MPa)	1,740 (12)	1,740 (12)	1,886 (13)	2,030.5 (14)	1,740 (12)	2,393 (16.5)	2,248.1 (15.5)	2,538.2 (17.5)
Impact rate	bpm	700-1,540	700-1,440	600-1,137	420-870	400-800	320-720	320-560	350-700
Speeds		1	1	1	1	1	2	2	2
Automatic greasing		-	-	Optional	Standard	Standard	Standard	Standard	Standard
Tool diameter	in (mm)	3 (76)	3.3 (84)	3.7 (94)	4.2 (106)	4.7 (118)	5.5 (140)	6.3 (160)	7 (175)
Max. back pressure	PSI (MPa)	290 (2)	290 (2)	290 (2)	218 (1.5)	145 (1)	363 (2.5)	363 (2.5)	218 (1.5)
Carrier size	metric ton	4-10	5-12	7-14	8-18	15-25	20-35	27-40	35-60
Komatsu carriers available in U.S. market		PC78US	PC88MR	PC130 PC138USLC	PC130 PC138USLC	PC160LC PC170LC PC200	PC210LC PC220LC PC228USLC PC238USLC PC240LC PC270LC PC290LC	PC360LC PC390LC	PC490LC

Matching tables

Carrier	V-series			H-series		
	Tool diameter in (mm)	lbs. (kg)	(Model)	Tool diameter in (mm)	lbs. (kg)	(Model)
PC78US-8/10/11				3.0 (76)	804.7 (365)	JMHB70H
PC88MR-8/10/11				3.3 (84)	981.0 (445)	JMHB80H
PC130LC-11				4.2 (106)	1,609.4 (730)	JMHB130H
PC138USLC-11				4.2 (106)	1,609.4 (730)	JMHB130H
PC160LC-8				4.6 (118)	2,469.2 (1,120)	JMHB170H
PC170LC-10/11				4.6 (118)	2,469.2 (1,120)	JMHB170H
PC200-8/8M0				4.6 (118)	2,469.2 (1,120)	JMHB170H
PC210LC-10/11	4.8 (122)	3,196.7 (1,450)	JMHB230V	5.5 (140)	4,153.5 (1,884)	JMHB220H
PC220LC-12	4.8 (122)	3,196.7 (1,450)	JMHB230V	5.5 (140)	4,153.5 (1,884)	JMHB220H
PC228USLC-8/10/11	4.8 (122)	3,196.7 (1,450)	JMHB230V	5.5 (140)	4,153.5 (1,884)	JMHB220H
PC238USLC-11	4.8 (122)	3,196.7 (1,450)	JMHB230V	5.5 (140)	4,153.5 (1,884)	JMHB220H
PC240LC-10/11	4.8 (122)	3,196.7 (1,450)	JMHB230V	5.5 (140)	4,153.5 (1,884)	JMHB220H
PC270LC-8	4.8 (122)	3,196.7 (1,450)	JMHB230V	5.5 (140)	4,153.5 (1,884)	JMHB220H
PC290LC-10/11	4.8 (122)	3,196.7 (1,450)	JMHB230V	5.5 (140)	4,153.5 (1,884)	JMHB220H
PC360LC-10/11	5.9 (150)	5,615.2 (2,547)	JMHB370V	6.3 (160)	5,558.1 (2,571)	JMHB360H
PC365LC-11	5.9 (150)	5,615.2 (2,547)	JMHB370V	6.3 (160)	5,558.1 (2,571)	JMHB360H
PC390LC-10/11	5.9 (150)	5,615.2 (2,547)	JMHB370V	6.3 (160)	5,558.1 (2,571)	JMHB360H
PC490LC-10/11	6.7 (170)	7,561.9 (3,430)	JMHB470V	6.9 (175)	7,189.3 (3,261)	JMHB460H

Select the right tool for the job

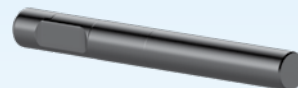
Using the correct tool is the first step in obtaining maximum life and performance from your breaker. It can also decrease overall running costs and increase productivity.



Pyramid

Application: secondary breaking, demolition, mass excavation

Material: low and medium hardness, homogeneous structure



Blunt

Application: secondary breaking

Material: high hardness, abrasive



Chisel

Application: trenching, mass excavation

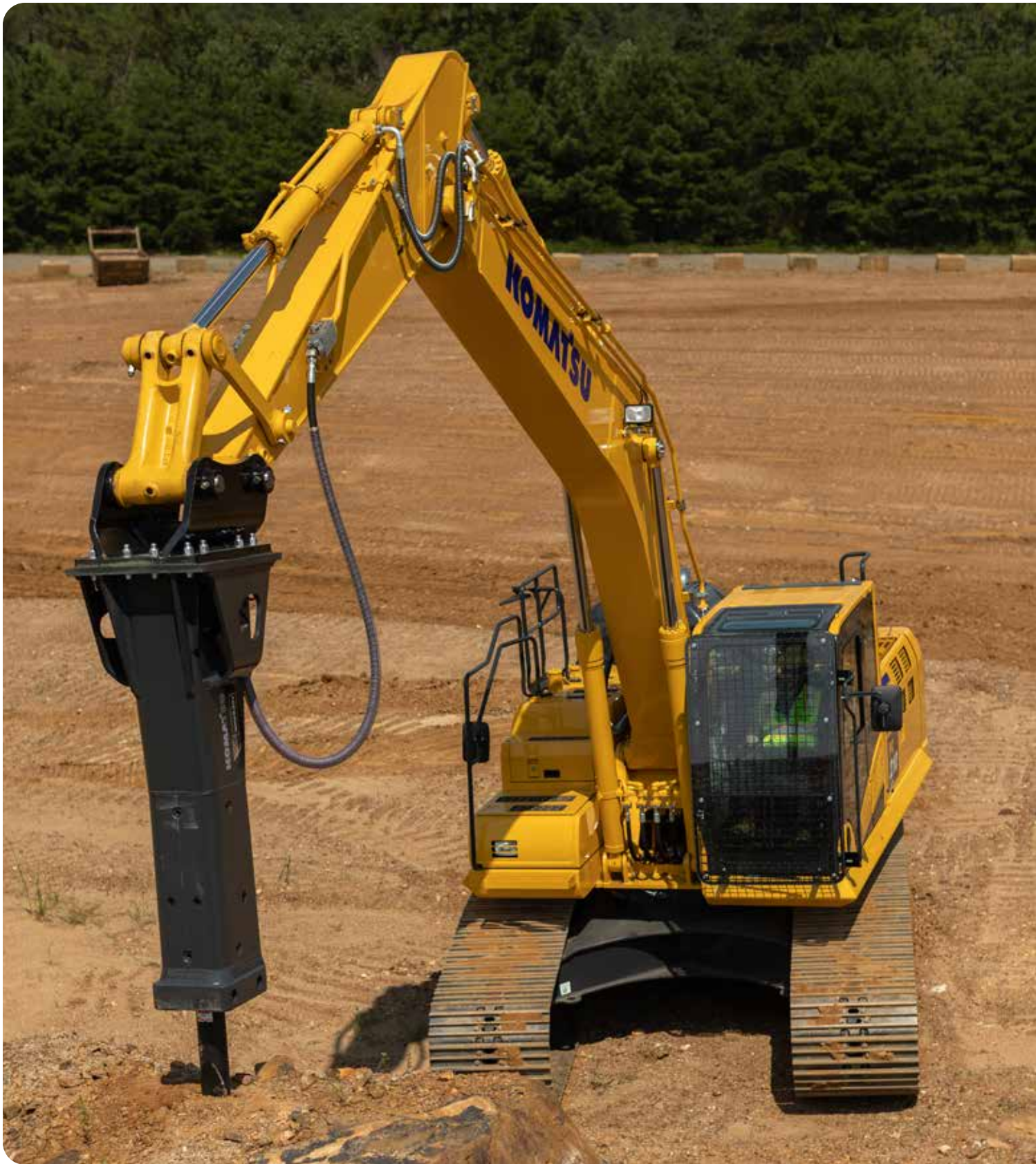
Material: low and medium hardness, non-homogeneous structure, abrasive



Moil point

Application: secondary breaking, demolition, mass excavation

Material: low and medium hardness, non-homogeneous structure



Product designs, specifications and/or data in this document are provided for informational purposes only and are not warranties of any kind. Product designs and/or specifications may be changed at any time without notice. The only warranties that apply to sales of products and services are Komatsu's standard written warranties, which will be furnished upon request.

Komatsu and other trademarks and service marks used herein are the property of Komatsu Ltd. or its subsidiaries, or the respective owners or licensees.

KOMATSU

[komatsu.com](https://www.komatsu.com)

