



Safety



Reliability



Productivity



Drilling equipment

Jumbo hydraulics	Variable displacement piston pumps with load sensing for feed and boom movements
Controls	Intelsense control system incorporating these features: collaring, anti-jamming, control levers for operating percussion, rotation and feed and optional auto return to start position following hole completion
Feed-boom position	Feed inline complete with 100% auto-parallelism across face coverage

Drilling equipment

Boom quantity		2
Boom coverage (height)	7 331 mm	24 ft 7 in
Boom coverage (width)	10 100 mm	33 ft 2 in
Boom extension	1 200 mm	3 ft 9 in
Feed extension (fixed feed)	1 262 mm	4 ft 1 in
Feed extension (telescopic feed)	805 mm	2 ft 6 in
Guide rollover		360°

Rock drills

Komatsu (Montabert) JZD12	12 kW	16 HP
Komatsu (Montabert) JZD15	15 kW	19 HP
Komatsu (Montabert) JZD21	21 kW	28 HP
Komatsu (Montabert) JZD27	27 kW	36 HP

Leveling jacks

Front (with outriggers)	2
Rear	2

Drilling configurations

8 ft fixed feed		
Drill rod length (MF Steel)	2 440 mm	8 ft
Max drill depth	2 136 mm	7 ft
10 ft fixed feed		
Drill rod length (MF Steel)	3 050 mm	10 ft
Max drill depth	2 746 mm	9 ft
12 ft fixed feed		
Drill rod length (MF Steel)	3 660 mm	12 ft
Max drill depth	3 356 mm	11 ft
14 ft fixed feed		
Drill rod length (MF Steel)	4 270 mm	14 ft
Max drill depth	3 966 mm	13 ft
16 ft fixed feed		
Drill rod length (MF Steel)	4 877 mm	16 ft
Max drill depth	4 573 mm	15 ft
18 ft fixed feed		
Drill rod length (MF Steel)	5 490 mm	18 ft
Max drill depth	5 182 mm	17 ft
8-12 ft fixed feed		
Drill rod length (MF Steel)	2 440 - 3 660 mm	8-12 ft
Max drill depth	2 133 - 3 353 mm	7 - 11 ft
8-14 ft fixed feed		
Drill rod length (MF Steel)	2 440 - 4 270 mm	8-14 ft
Max drill depth	2 136 - 3 966 mm	7 - 13 ft
10-16 ft fixed feed		
Drill rod length (MF Steel)	3 050 - 4 877 mm	10-16 ft
Max drill depth	2 746 - 4 573 mm	9 - 15 ft

Drilling electronics

JZD12	Two 56 kW (75 hp) TEFC electric motors (voltage as per application) NEMA 4 MCP enclosure	
JZD15, JZD21, JZD27	Two 75 kW (100 hp) TEFC electric motors (voltage as per application) NEMA 4 MCP enclosure	
Power requirements (min - max, configuration dependent)		
380 V	125.6 kW - 187 kW	168 hp - 251 hp
440 V	125.6 kW - 188 kW	168 hp - 252 hp
480 V	125.6 kW - 187 kW	168 hp - 251 hp
525 V	125.6 kW - 187 kW	168 hp - 251 hp
575 V	125.6 kW - 187 kW	168 hp - 251 hp
Cable reel capacity (configuration dependent)		
	up to 200 m	up to 656 ft.

Control system

User interface (carrier)	CAN bus
--------------------------	---------

Operating weights

Base unit	24 700 kg	54 454 lbs
Fully optioned	28 700 kg	63 273 lbs

Driving speeds forward and reverse

1st gear (0% grade) - Tier III	5.9 km/h	3.6 mph
2nd gear (0% grade) - Tier III	13.1 km/h	8.1 mph
1st gear (0% grade) - Stage V	5.1 km/h	3.2 mph
2nd gear (0% grade) - Stage V	11.4 km/h	7.1 mph

Powertrain

General		
Fuel tank capacity	98 L	25.9 US gal
Engine		
Model	Cummins QSB4.5	Cummins QSB4.5
Displacement	4.5 L	4.5 L
Certification	EPA Tier 3 MSHA, Canmet	EURO Stage V MSHA, Canmet
Cooling type	Water cooled, charge air cooled	Water cooled, charge air cooled
Air filtration	Single-stage dry type	Single-stage dry type
Output	97 kW (130 HP) @2 500 rpm	99 kW (133 HP) @2 200 rpm
Transmission		
Model	Dana	
Shifting	Powershift	
Speeds	Two forward/two reverse	
Axles		
Front and rear	Dana	
Differential	Limited slip	
Service brakes	Enclosed wet disc	
Parking brakes	Hydraulically-released/spring-applied	
Oscillation angle	+/- 6 deg	
Tires		
Type	Pneumatic, lugged	
Size	14:00-24	

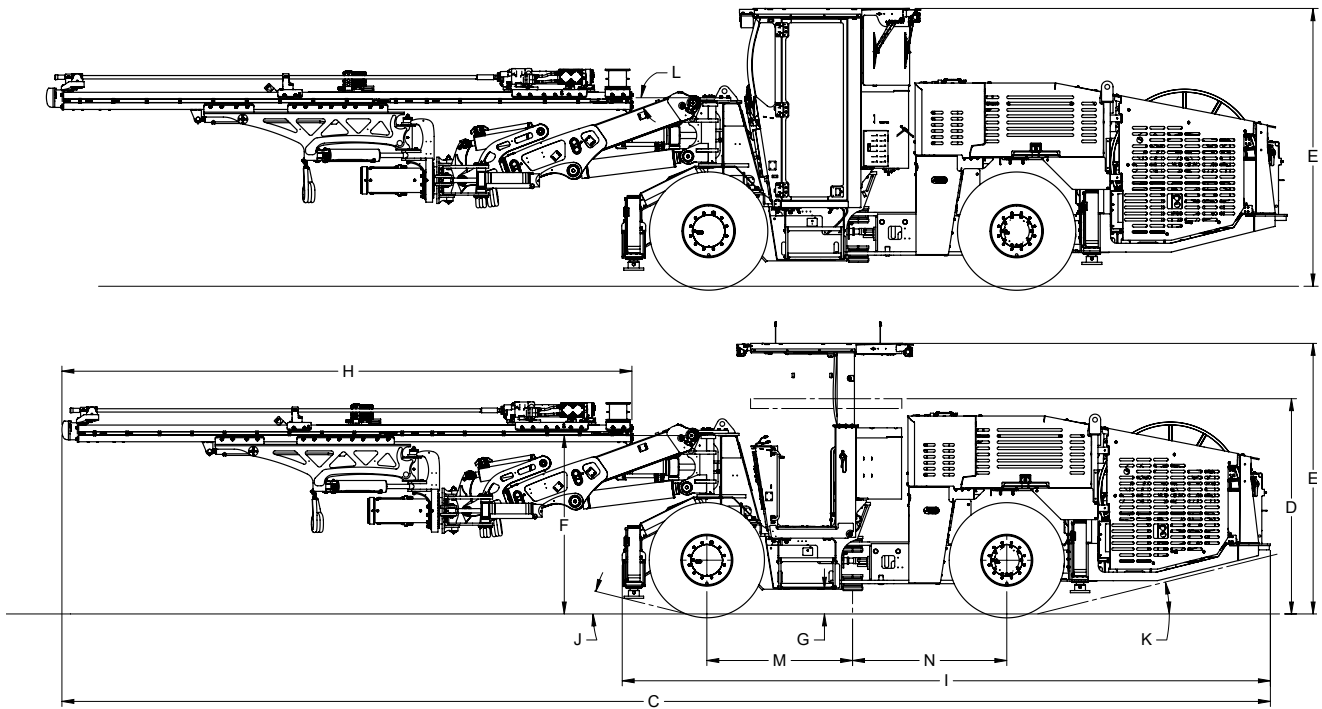
Carrier hydraulics

General	Variable displacement piston pumps with load sense	
Oil tank volume	395 L	104 US gal
Steering hydraulics	Variable displacement piston pumps with load sense; two double-acting steer cylinders	
Brake system	Totally enclosed service brake is hydraulically-applied, spring-released on front and rear axles with automatic brake application	

Carrier electronics

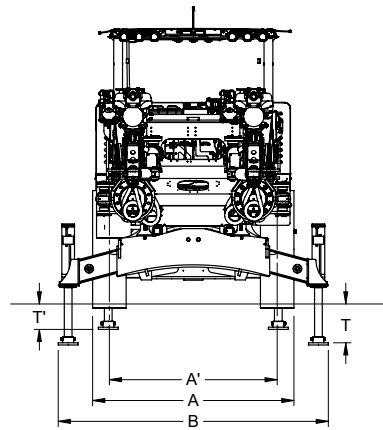
Alternator	24 V/120 A
Batteries	2 x 12 V
Starter	24 V heavy-duty
Tram lights	8 forward/5 reverse
Drill lights	8 front

Overall dimensions

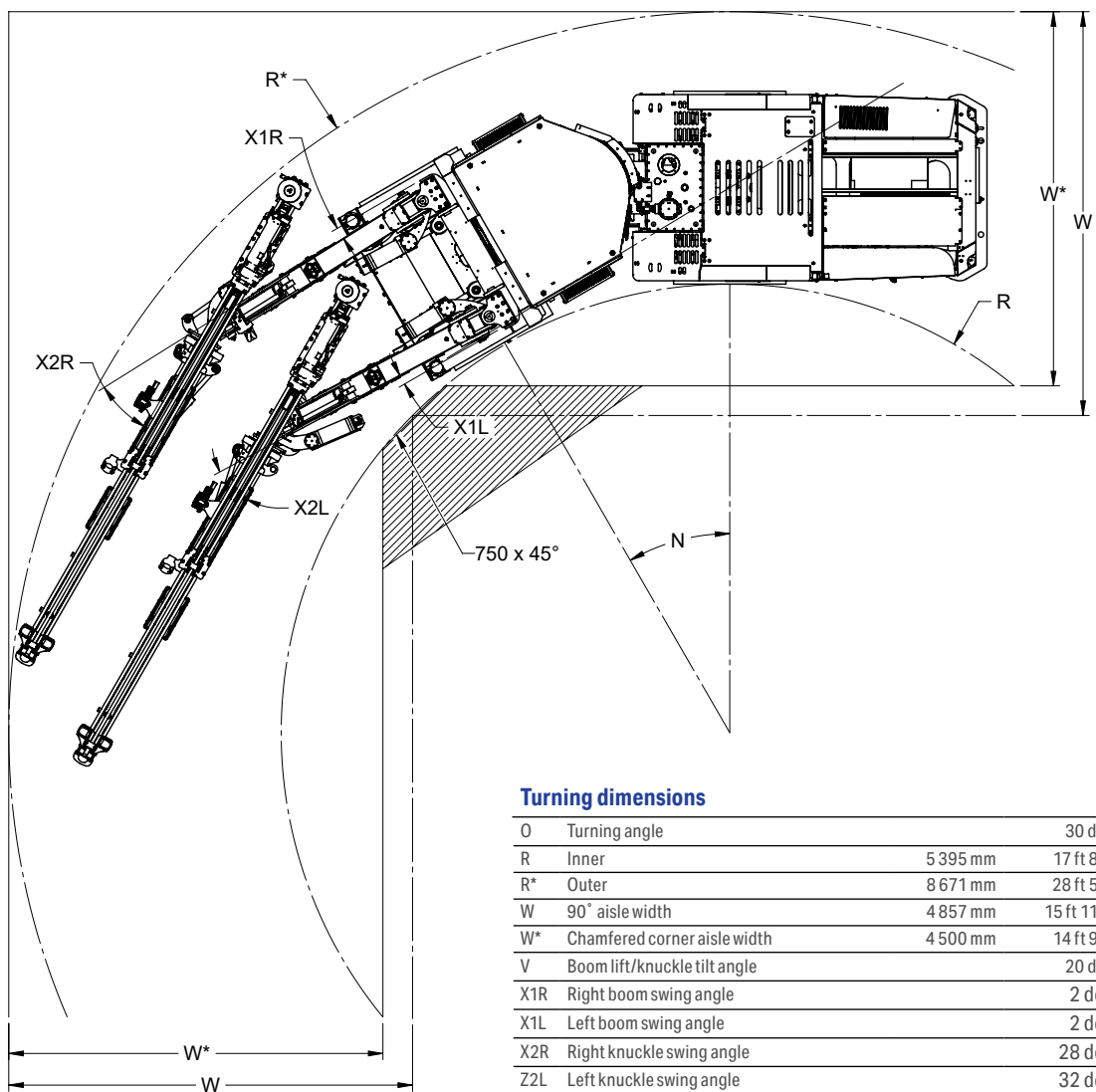


Overall dimensions

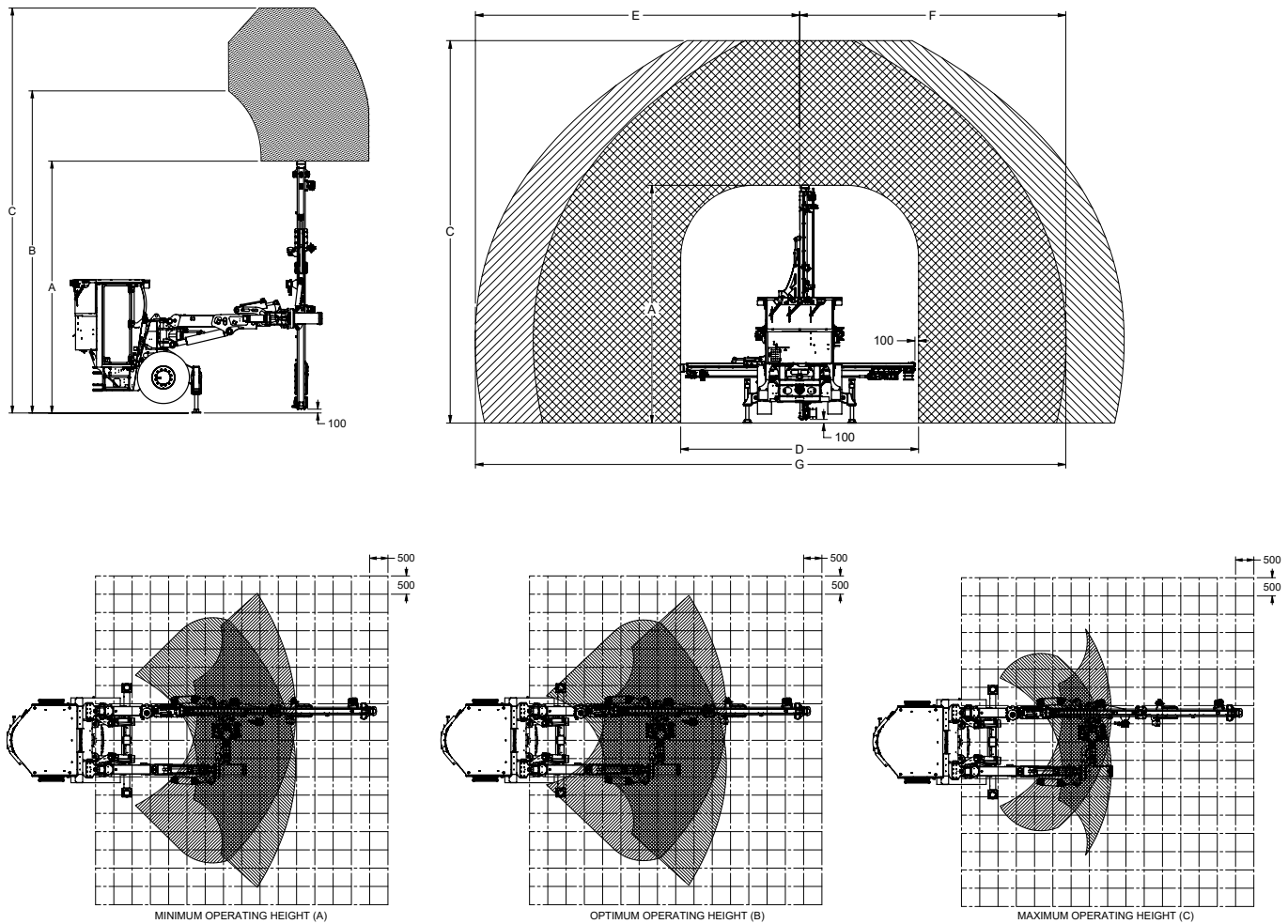
A	Width	2 320 mm	7 ft 7 in
A'	Track width	1 934 mm	6 ft 4 in
B	Width with outriggers extended	3 113 mm	10 ft 3 in
C	Total length (configuration dependent)		
	Min (with fixed 8 ft. feed)	12 691 mm	41 ft 8 in
	Max (with fixed 18 ft. feed)	14 507 mm	47 ft 7 in
D	Height with canopy in collapsed position	2 530 mm	8 ft 4 in
E	Height with canopy/cab in drill/tram position	3 175 mm	10 ft 5 in
F	Height to boom pin center	2 094 mm	6 ft 10 in
G	Ground clearance	290 mm	11 in
H	Feed Length (configuration dependent)		
	Min (with fixed 8 ft. feed)	4 010 mm	13 ft 2 in
	Max (with fixed 18 ft. feed)	7 300 mm	23 ft 11 in
I	Carrier length	7 607 mm	24 ft 11 in
J	Approach angle	14 deg	25% grade
K	Departure angle	14 deg	25% grade
L	Boom lift angle		20 deg
M	Articulation to front axle	1 710 mm	5 ft 7 in
N	Articulation to rear axle	1 810 mm	5 ft 11 in
T	Front jack lift	447 mm	1 ft 6 in
T'	Rear jack lift	293 mm	1 ft 0 in



Turning dimensions



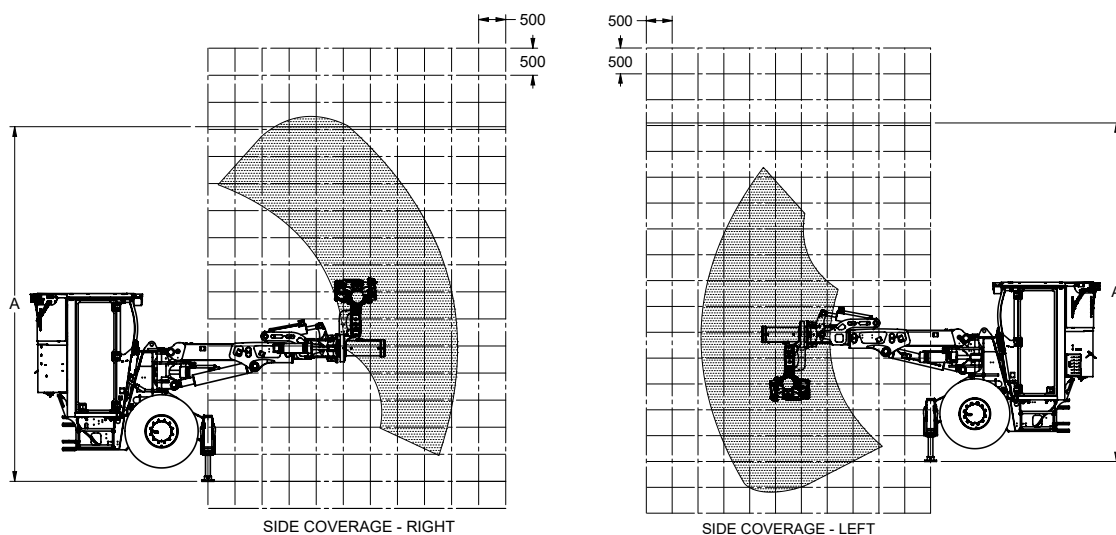
Operating height and reach dimensions



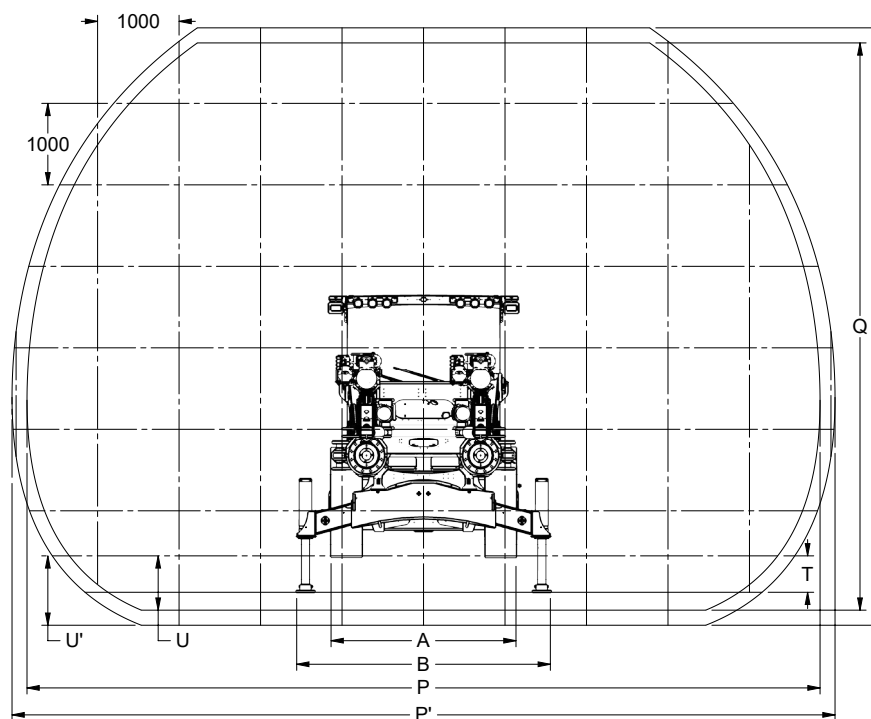
Operating height and reach dimensions

	A/D (minimum)		B (optimal)		C (maximum)		E (maximum)		F (maximum)		G (maximum)	
12 ft fixed feed	5 350 mm	17 ft 7 in	7 415 mm	24 ft 4 in	9 565 mm	31 ft 5 in	7 965 mm	26 ft 2 in	6 365 mm	20 ft 11 in	14 330 mm	47 ft 0 in
14 ft fixed feed	5 960 mm	19 ft 7 in	7 770 mm	25 ft 6 in	9 920 mm	32 ft 7 in	8 320 mm	27 ft 4 in	6 720 mm	22 ft 1 in	15 040 mm	49 ft 4 in
16 ft fixed feed	6 565 mm	21 ft 6 in	8 380 mm	27 ft 6 in	10 530 mm	34 ft 7 in	8 930 mm	29 ft 4 in	7 330 mm	24 ft 1 in	16 260 mm	53 ft 4 in
18 ft fixed feed	7 415 mm	24 ft 4 in	9 230 mm	30 ft 3 in	11 380 mm	37 ft 4 in	9 780 mm	32 ft 1 in	8 180 mm	26 ft 10 in	17 960 mm	58 ft 11 in
8-14 ft telescopic feed	4 160 mm	13 ft 8 in	7 770 mm	25 ft 6 in	9 920 mm	32 ft 7 in	7 320 mm	24 ft 0 in	6 720 mm	22 ft 1 in	15 040 mm	49 ft 4 in
10-16 ft telescopic feed	4 670 mm	15 ft 4 in	8 380 mm	27 ft 6 in	10 530 mm	34 ft 7 in	8 930 mm	29 ft 4 in	7 330 mm	24 ft 1 in	16 260 mm	53 ft 4 in

Side wall coverage



Face coverage



Face coverage dimensions

Fixed feed			
-	Face coverage area	61 sq m	657 sq ft
P	Face coverage width (fixed feed)	9 730 mm	31 ft 9 in
Q	Face coverage height (fixed feed)	6 960 mm	22 ft 8 in
U	Total undercut (fixed feed)	665 mm	2 ft 1 in
Telescopic feed			
-	Face coverage area	66 sq m	710 sq ft
P'	Face coverage width (telescopic feed)	10 100 mm	33 ft 1 in
Q'	Face coverage height (telescopic feed)	7 330 mm	24 ft 0 in
U'	Total undercut (telescopic feed)	850 mm	2 ft 7 in



Standard features

Parking brake	●
Articulation lock brace mounted to machine	●
Back-up alarm	●
Four emergency stops	●
ROPS/FOPS certified canopy (ISO 3449:2005 ISO 3471:2008)	●
3-point-contact (access/egress to operators station)	●
LED working lights	●
Single 20 lb fire extinguisher	●
LCD dash	●
Mechanical suspension seat	●
Joystick boom/drill controls	●
Switched 24VDC power supply	●
12VDC Power port	●
2x 2.1A USB power port	●
Engine diagnostic port	●

4 m (14 ft.) single stage feed	●
Fixed end and traveling centralizer(s)	●
Komatsu (Montabert) JZD21 rock drill	●
Water pump	●
11 kW (14.8 HP) air compressor	●
Water flushing	●
Trailing cable reel with spooling device	●
Manual hand pump for hydraulic tank filling	●
Centralized carrier lubrication station	●
Tier 3 Cummins QSB 3.3L diesel engine	●
Pneumatic tires	●
Double wall insulated exhaust piping	●
DOC exhaust	●
Floor mat	●

● standard equipment ○ optional equipment

Other options available - ask your Komatsu service representative

Optional features

Various voltages: 380V / 50Hz, 440V / 60Hz, 480V / 60Hz, 525V / 50Hz, 575V / 60Hz	<input type="radio"/>
Drill on diesel power	<input type="radio"/>
Trailing cable (standard or extended length)	<input type="radio"/>
Cable hangers	<input type="radio"/>
18.5 kW (24.8 HP) air compressor	<input type="radio"/>
Fiberglass exhaust wrap (tier 3 only)	<input type="radio"/>
DPF Exhaust (tier 3 only)	<input type="radio"/>
Fire suppression system (manually actuated)	<input type="radio"/>
Fire suppression system (manually actuated) with Checkfire system	<input type="radio"/>
Secondary 20 lbs. fire extinguisher	<input type="radio"/>
Hydro expanding bolt unit	<input type="radio"/>
Pressure washer with 20 m (65.6 ft) hose reel	<input type="radio"/>
Electric fill for hydraulic tank	<input type="radio"/>
Wiggins fill for oils and coolants	<input type="radio"/>
Wiggins fill for fuel tank	<input type="radio"/>
Centralized greasing for boom	<input type="radio"/>
Carrier automatic lubrication system	<input type="radio"/>
Grease station with hose reel and drum pump	<input type="radio"/>
Red/green directional lights (front and rear)	<input type="radio"/>
Beacon light kit	<input type="radio"/>
Brake lights	<input type="radio"/>
100 m hose reel with water hose	<input type="radio"/>
Rear view camera	<input type="radio"/>
Wheel chocks (10") with bracket	<input type="radio"/>
Front electronic curtain (safety barrier)	<input type="radio"/>
Jump start receptacle	<input type="radio"/>
Air/water maintenance kit	<input type="radio"/>
Rear-mounted reel control box	<input type="radio"/>
Dewatering pump ready (pump not included)	<input type="radio"/>
Abrasion resistant boom hosing	<input type="radio"/>

Cabin/canopy options

ROPS/FOPS certified enclosed cabin (ISO 3449:2005 ISO 3471:2008)	<input type="radio"/>
Climate control	<input type="radio"/>
Filtered and pressurized	<input type="radio"/>
Safety glass windows	<input type="radio"/>
Integrated 2-way radio mounting	<input type="radio"/>
Stereo system (music player with speakers)	<input type="radio"/>
Rock guard (front of cabin or canopy)	<input type="radio"/>
Seatbelt sensor	<input type="radio"/>
Door sensor (cabin only)	<input type="radio"/>
Manually controlled spot lights (canopy only)	<input type="radio"/>
Joystick controlled spot lights (cabin only)	<input type="radio"/>
2-way radio mounting (canopy only)	<input type="radio"/>
2-way radio antenna mounting	<input type="radio"/>
Boot washer	<input type="radio"/>

Environmental options

High altitude environment package	<input type="radio"/>
Low ambient temperature environment package	<input type="radio"/>
Corrosive environment package	<input type="radio"/>

Flushing options

Water flushing + air blast	<input type="radio"/>
Water flushing + air blast + air mist	<input type="radio"/>

Tag and display language options

English, Spanish, Russian, French, Portuguese	<input type="radio"/>
---	-----------------------

Feed and rock drill options

Fixed feeds: 8 ft., 10 ft., 12 ft., 14 ft., 16 ft., 18ft.	<input type="radio"/>
Telescopic feed: 8/12 ft., 8/14 ft., 10/16 ft.	<input type="radio"/>
Rock drill options: JZD12, JZD14, JZD21, JZD27	<input type="radio"/>
Centralizers	
Hydraulic centralizer (end)	<input type="radio"/>
Quick change centralizer with hard bushings (end and/or travelling)	<input type="radio"/>
Quick change centralizer with soft bushings (end and/or travelling)	<input type="radio"/>
Auto return	<input type="radio"/>
Rod handler	<input type="radio"/>
Integrated screen/mesh handler	<input type="radio"/>

● standard equipment ○ optional equipment

Other options available - ask your Komatsu service representative

Product designs, specifications and/or data in this document are provided for informational purposes only and are not warranties of any kind. Product designs and/or specifications may be changed at any time without notice. The only warranties that apply to sales of products and services are Komatsu's standard written warranties, which will be furnished upon request.

Komatsu is a trademark of Komatsu Ltd. or one of its affiliates. All other trademarks and service marks used herein are the property of their respective owners or licensees.

KOMATSU

komatsu.com

