



Reclaim feeders





Harnessing the power of
industrial technology to
support a sustainable,
prosperous future for all.

**You move the minerals.
We make the machines to help you advance.**

The essential minerals you produce power modern technology, facilitate community growth and move society forward. But these minerals are hard to find and tougher to mine.

Your customers trust you to deliver these resources, so you need an equipment, service and technology provider you can rely on to help keep your operation productive and efficient. Together we can focus on operating safely, productively and responsibly.

Reclaim feeders that get the job done

Lower total cost of ownership

From purchase to operation, lower TCO is the goal.

- Low installation cost
- Easily-available parts reduce downtime
- Lower cost-per-ton for parts
- Demonstrated machine durability delivers long-term value

Flexibility optimizes valuable resources

Making the most of your time and equipment is crucial.

- Easily relocated to areas of greatest need
- Designed to effectively fulfill multiple applications
- Handles a wide range of resources including coal, industrial minerals and wet, sticky materials

Delivering reliability you can count on

There's no substitute for consistent uptime.

- Average in-service life of more than 15 years
- Simple design with steel components provides you with a reliable, durable machine for maximum production
- Designed to accept pre-engineered, bolt-on/plug-in options and upgrades, Stamler RF-5s maximize performance with minimal impact on OE lead time

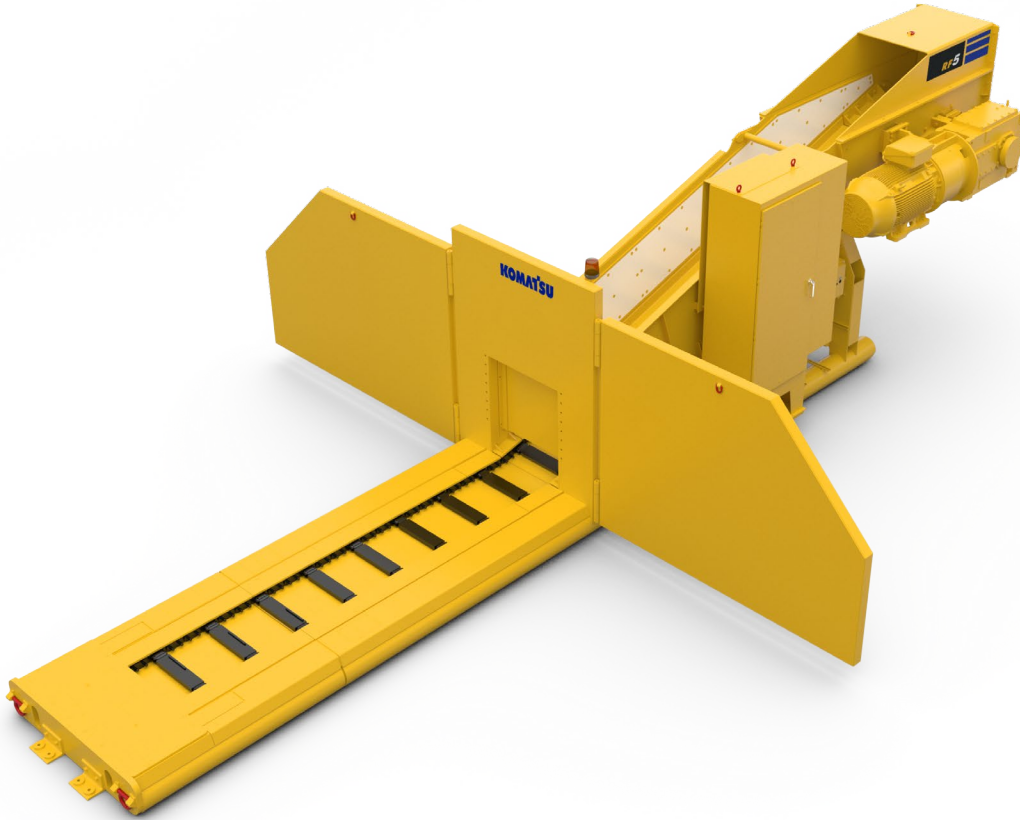


Achieve greater results

Your mining operation thrives when you move material efficiently and safely. Providing you with flexibility and lower TCO, Stamler reclaim feeders empower you to feed and blend materials with smooth operation and minimal maintenance.

With rapid shipment of the Stamler RF-5, you'll receive your feeder 30-40% faster than customized alternatives — so you can increase capacity sooner!

Feeder benefits that let you focus on your business



Cost-effective operation

Featuring a simple machine architecture, Stamler feeders reduce installation and shipping fees, providing savings from the very beginning.

In addition, using the same parts and components across the product line delivers a more cost-effective operation at just \$0.01 parts cost per ton. Common parts also contribute to greater uptime since you'll have what you need when you need it.

The flexibility factor

Easily moved and installed (only requiring solid, level ground and a power source), Stamler reclaim feeders work hard in cement plants, ports, refineries, power plants and mines.

They get the job done, blending and feeding a wide range of materials including coal, aggregates, limestone, petroleum coke, clay, iron ore, mill scale, bauxite, clinker, fly ash, tire chips and gypsum.

Reliability for the long run

You'll appreciate getting over a decade of productivity out of your Stamler reclaim feeders. Heavy-duty steel components contribute to this longevity, while the low-profile beveled intake end reduces damage from loading equipment.

Rounding out the reliability factors, the engineered class chain accommodates both fine and sticky materials without compromising productivity.

Your safety matters

Protecting your operators is of utmost importance, which is reflected in our thoughtful feeder design. Our machines provide electrical protection with emergency stops, covers, guards and screens to eliminate contact with moving parts.

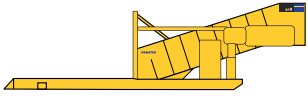
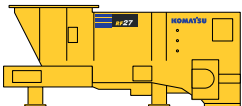
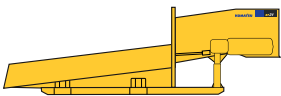
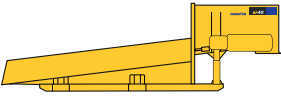
Frame stabilization, automatic operation and low speed options also contribute to a safer operating environment.

The Stamler reclaim feeder family from Komatsu

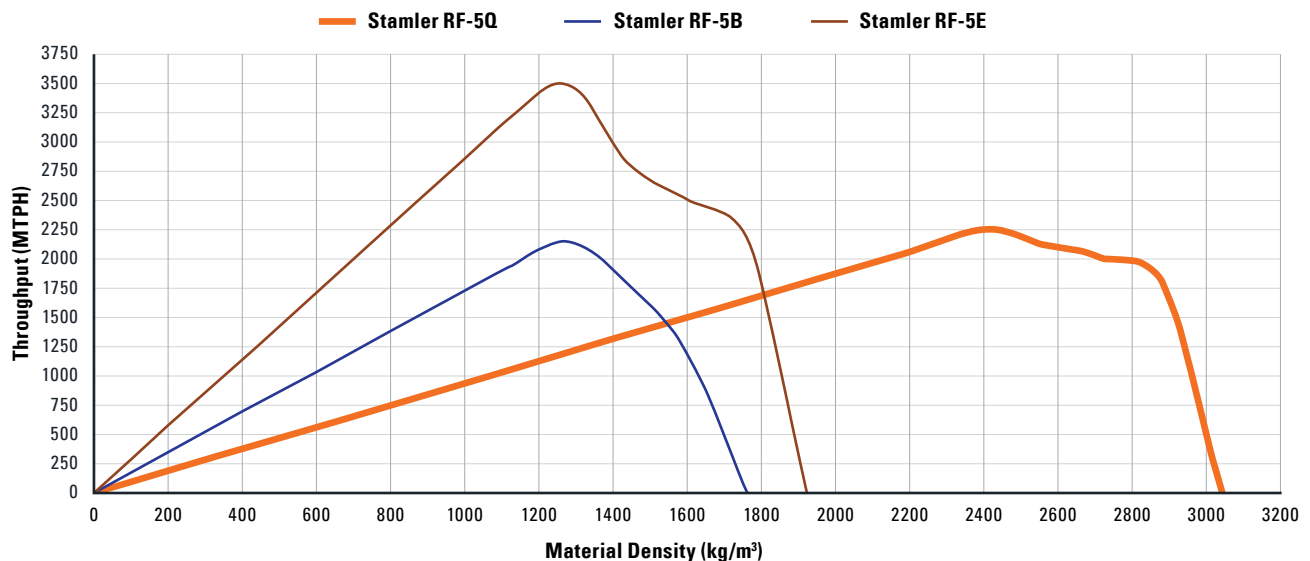
Founded in 1948, Stamler has been recognized worldwide for its engineering heritage and adherence to the highest quality standards for products, including feeders. Since the acquisition of Stamler in 2006, reclaim feeders have become an important part of our comprehensive crushing and conveying solutions.

Producing several different machines for your blending and feeding needs, Stamler reclaim feeders have a power rating range of 150 to 300 kW and can handle materials of different sizes and consistency.

In addition to the semi-mobile RF-5 product line, we continue to offer our engineered-to-order solutions. These fixed models are hopper-loaded and vary in size, throughput capacity and installation configurations.

Model		Installation Type	Materials Covered	Power Rating Range (kW)
Stamler RF-5 Standardized		Semi-mobile Fixed, stockpile-fed Fixed, hopper-fed	Petcoke Coal Aggregates Industrial minerals	≤ 370
RF-27		Semi-mobile Fixed, stockpile-fed Fixed, hopper-fed	Coal Aggregates Industrial minerals	≤ 185
RF-31		Semi-mobile Fixed, stockpile-fed Fixed, hopper-fed	Aggregates Industrial minerals Heavy minerals/ores	≤ 220
RF-40		Semi-mobile Fixed, stockpile-fed Fixed, hopper-fed	Aggregates Heavy minerals/ores	≤ 370

Stamler RF-5 throughput capacity vs. material density — baseline



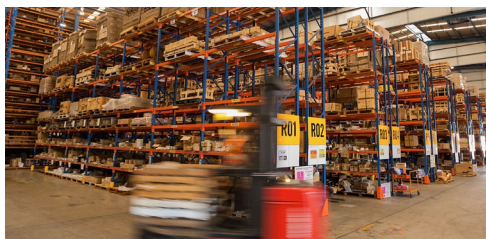


The delivery time of our standard Stamler RF-5 is 30-40% faster than customized alternatives, putting our customers into production as soon as possible.



The Tech You Want

Staying ahead of technology is important to your business — and we make it happen. Electric automatic lubrication saves time, while remote operation from your Machine Control Center (MCC) increases efficiency and safety. In addition, standard machines can accept machine-mounted and customer-supplied VFDs. The electromechanical flow gate allows you to further refine your material throughput with infinite adjustability within the gate opening range.



The Parts You Need

Replacement parts are only as good as their availability. Komatsu has a proven track record of providing on-time delivery for replacement parts through our advanced, well-stocked distribution system, as well as 24/7 aftermarket parts and service support.



The Service You Deserve

Our Recommended Spares Parts List (RSPL) for your Stamler RF-5 includes wear parts, insurance parts and critical parts to keep your machine running and minimize your downtime. Check with your account manager for the most current discount opportunities on these RSPL items.

Equipping the world to empower a sustainable future together

Although we've been historically known for our superior equipment, we also provide comprehensive service solutions and fleet management technology.

Committed to enhancing your entire ownership experience, we leverage the intelligence of big data to deliver actionable insights and provide the technology needed to make sure you have the service, tech tools and parts you need to reduce downtime

Komatsu: Leading the way >FORWARD

Tomorrow's mining will demand ever-evolving technology in order to lower costs, raise productivity and drive zero harm. With virtual work sites throughout the world, we're able to develop and deploy the right technology at the right time.

We are Komatsu. We are your global partner.



For your future

While supporting your current mining needs, we're also creating a stronger tomorrow with increased productivity and improved safety. If you'd like to know more, contact your local Komatsu account representative today.

Product designs, specifications and/or data in this document are provided for informational purposes only and are not warranties of any kind. Product designs and/or specifications may be changed at any time without notice. The only warranties that apply to sales of products and services are Komatsu's standard written warranties, which will be furnished upon request.

Komatsu and other trademarks and service marks used herein are the property of Komatsu Ltd. or its subsidiaries, or the respective owners or licensees.

KOMATSU

[komatsu.com](https://www.komatsu.com)

