



Working Gear

GALEO

SCRAP HANDLER

PC220LC/PC300LC



PC220LC with optional high mount cab



PC300LC with optional parallel link cab

Assuring scrap handling of higher efficiency in a larger working range, overseeing the work at a higher viewpoint

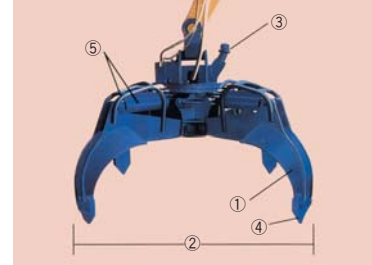
- The maximum working radius of 16 meters is assured
- For a better command of view from the operator's seat, two types of cabs of parallel link cab and high mount cab are prepared, each allowing the operator to choose any desired height
- An assortment of grapple buckets is ready for use according to the type of work

KOMATSU[®]

■ Grapple Bucket

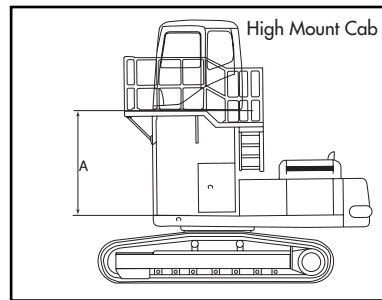
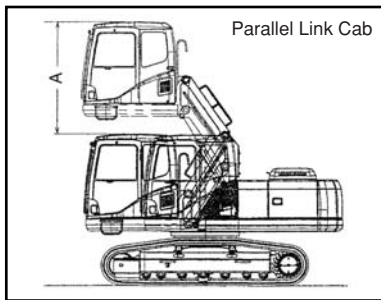
The Komatsu's grapple bucket can firmly get hold of scrapped materials with large gripping force. Moreover, as it turns 360° hydraulically, the bucket can freely grasp them at any position.

- ① Ideal blade shape for easier digging
- ② Consisting of 4 blades to match the bed of a hauling truck
- ③ Equipped with a stopper cushion
- ④ Adopting bolt-on-teeth
- ⑤ Equipped with protector



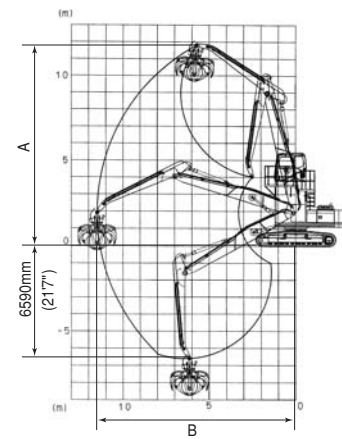
■ Operator's Cab (Optional)

Model	Parallel Link Cab	High Mount Cab			
	PC220LC/PC300LC	PC220LC/PC300LC			
Spec. Item		+1.6 m height (+5'3")	+2.0 m height (+6'7")	+2.5 m height (+8'2")	+3.5 m height (+11'6")
A - Lifting Amount mm/ft.in	2260/7'5"	1610/5'3"	2010/6'7"	2460/8'1"	3460/11'4"

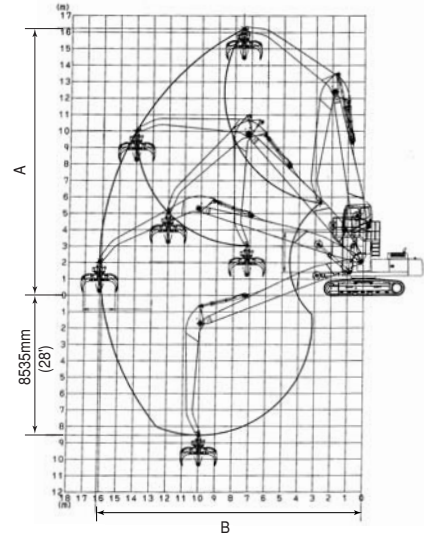


■ Working Rang

PC220LC-7



PC300LC-7



■ Specifications

		PC220LC-7	PC300LC-7	
Operating weight (with std. cab)	kg/lb	27400/60410	38430/84720 <small>(including high mount cab weight of 1050/2320)</small>	
Max. working height (at arm top pin) A	mm/ft.in	11820/38'9"	16225/53'3"	
Max. working radius (at arm top pin) B	mm/ft.in	11500/37'9"	16135 /52'11"	
Boom length	mm/ft.in	7200/23'7"	10500/34'5"	
Arm length	mm/ft.in	5000/16'5"	6800/22'4"	
Increment of counterweight	kg/lb	2420/5340	4500/9920	
Grapple bucket	Bucket capacity	m ³	0.4 0.72	
	Bucket weight	kg/lb	1560/3440 2030/4480	
	Bucket width at opening	mm/ft.in	1950/6'5" 2900/9'6"	
	Grapple cylinder pressure	MPa/PSI	27.5/3987.5 27.5/3987.5	
	Grapple swing motor pressure	MPa/PSI	13.7/1986.5 13.7/1986.5	
	Required flow rate	Opening / closing bucket	L/min(U.S.Gal)	190(50.2) 250(66.1)
		Turning bucket	L/min(U.S.Gal)	15-25(4.0-6.6) 15-25(4.0-6.6)
	Grapple turning speed	rpm	10-15	10-15
Grapple opening / closing speed	Opening	sec	2.5 2.0	
	Closing	sec	2.0 1.5	

- The photos or illustrations may partially vary from the standard specifications of Scrap Handler.
- For precautions when operating the machine, refer to the operation and maintenance manual.

©2006 Komatsu Printed in Japan 2006W1

KOMATSU®

Komatsu Ltd.

3-6 Akasaka 2-chome, Minato-ku
 Tokyo 107-8414, Japan
 Phone:(81)-3-5561-2787
 Fax:(81)-3-3587-2928