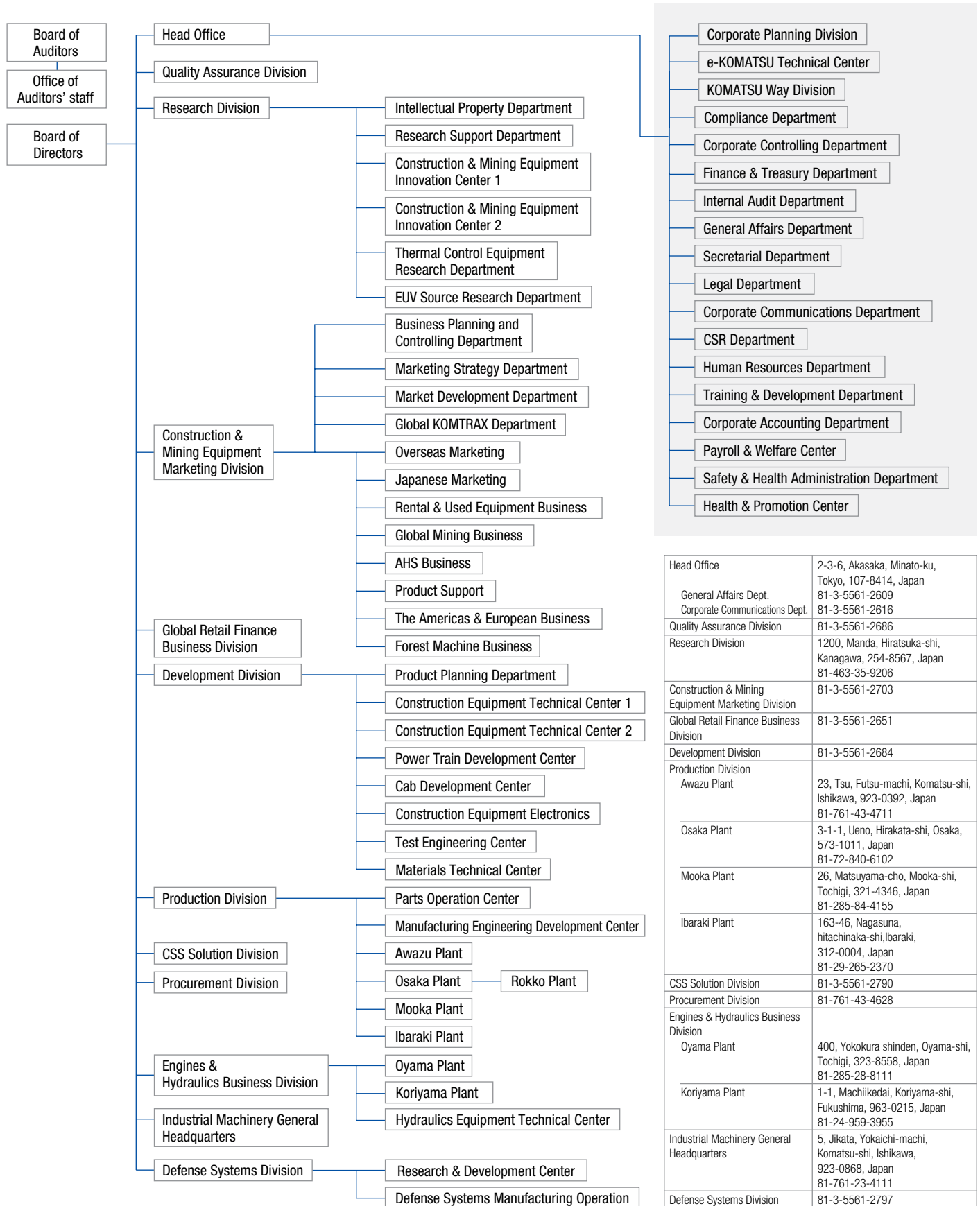


Organization

(As of June 24, 2008)



Head Office	2-3-6, Akasaka, Minato-ku, Tokyo, 107-8414, Japan 81-3-5561-2609
General Affairs Dept.	81-3-5561-2609
Corporate Communications Dept.	81-3-5561-2616
Quality Assurance Division	81-3-5561-2686
Research Division	1200, Manda, Hiratsuka-shi, Kanagawa, 254-8567, Japan 81-463-35-9206
Construction & Mining Equipment Marketing Division	81-3-5561-2703
Global Retail Finance Business Division	81-3-5561-2651
Development Division	81-3-5561-2684
Production Division	
Awazu Plant	23, Tsu, Futsu-machi, Komatsu-shi, Ishikawa, 923-0392, Japan 81-761-43-4711
Osaka Plant	3-1-1, Ueno, Hirakata-shi, Osaka, 573-1011, Japan 81-72-840-6102
Mooka Plant	26, Matsuyama-cho, Mooka-shi, Tochigi, 321-4346, Japan 81-285-84-4155
Ibaraki Plant	163-46, Nagasuna, hitachinaka-shi, Ibaraki, 312-0004, Japan 81-29-265-2370
CSS Solution Division	81-3-5561-2790
Procurement Division	81-761-43-4628
Engines & Hydraulics Business Division	
Oyama Plant	400, Yokokura shinden, Oyama-shi, Tochigi, 323-8558, Japan 81-285-28-8111
Koriyama Plant	1-1, Machiikedai, Koriyama-shi, Fukushima, 963-0215, Japan 81-24-959-3955
Industrial Machinery General Headquarters	5, Jikata, Yokaichi-machi, Komatsu-shi, Ishikawa, 923-0868, Japan 81-761-23-4111
Defense Systems Division	81-3-5561-2797