

# Corporate Information

(As of March 31, 2008)

## Outline

<b>Name</b> .....	Komatsu Ltd.
<b>Head Office</b> .....	2-3-6 Akasaka, Minato-ku, Tokyo 107-8414, Japan
<b>Date of Establishment</b> .....	May 13, 1921
<b>Common Stock Outstanding</b> .....	Consolidated: ¥67,870 million (US\$679 million) based on U.S. GAAP Non-consolidated: ¥70,120 million (US\$701 million)
<b>Number of Employees</b> .....	Consolidated: 39,267 Non-consolidated: 6,873

## Shareholder Information

<b>Shares of Common Stock Issued and Outstanding</b> .....	998,744,060 shares
<b>Number of Shareholders</b> .....	206,985
<b>Number of Shares per Trading Unit</b> .....	100
<b>Securities Code</b> .....	6301 (Japan)
<b>Stock Listings</b> .....	Tokyo and Osaka
<b>Transfer Agent for Common Stock</b> .....	Mitsubishi UFJ Trust and Banking Corporation 4-5, Marunouchi 1-chome, Chiyoda-ku, Tokyo 100-8212, Japan
<b>Depositories (ADRs)</b> .....	Depository Receipts Services, Citibank, N.A. 388 Greenwich Street, 14th Floor, New York, NY 10013, U.S.A. Ticker Symbol: KMTUY

## Major Shareholders (Top Ten)

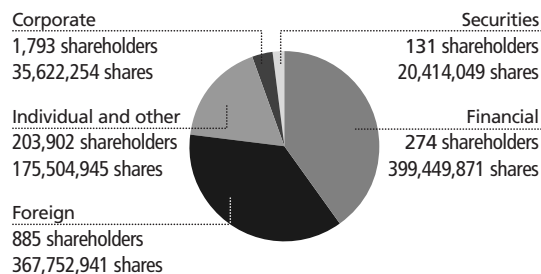
As of March 31, 2008

Name of shareholders	Number of shares held (in thousands)	Equity ratio (%)
Japan Trustee Services Bank, Ltd. (Trust Account)	68,240	6.8
The Master Trust Bank of Japan, Ltd. (Trust Account)	65,591	6.5
Taiyo Life Insurance Company	47,164	4.7
Nippon Life Insurance Company	33,283	3.3
State Street Bank and Trust Company	32,423	3.2
NATS CUMCO	18,172	1.8
Sumitomo Mitsui Banking Corporation	17,835	1.7
State Street Bank and Trust Company 505103	16,503	1.6
NIPPONKOA Insurance Co., Ltd.	13,962	1.4
Trust & Custody Services Bank, Ltd. (Trust Account Y)	11,875	1.1

Note: Equity ratio is calculated by subtracting treasury shares.

## Breakdown of Shareholders

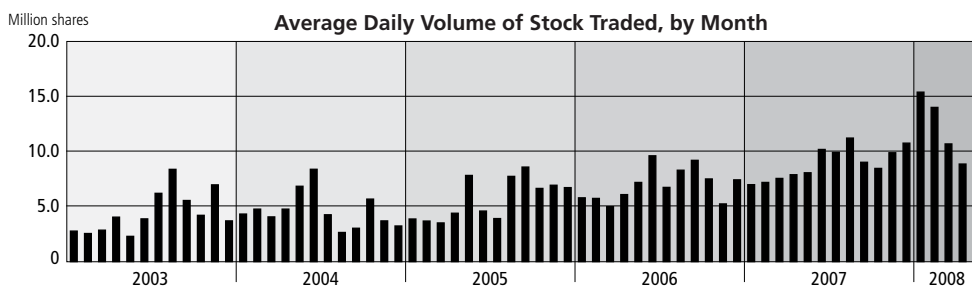
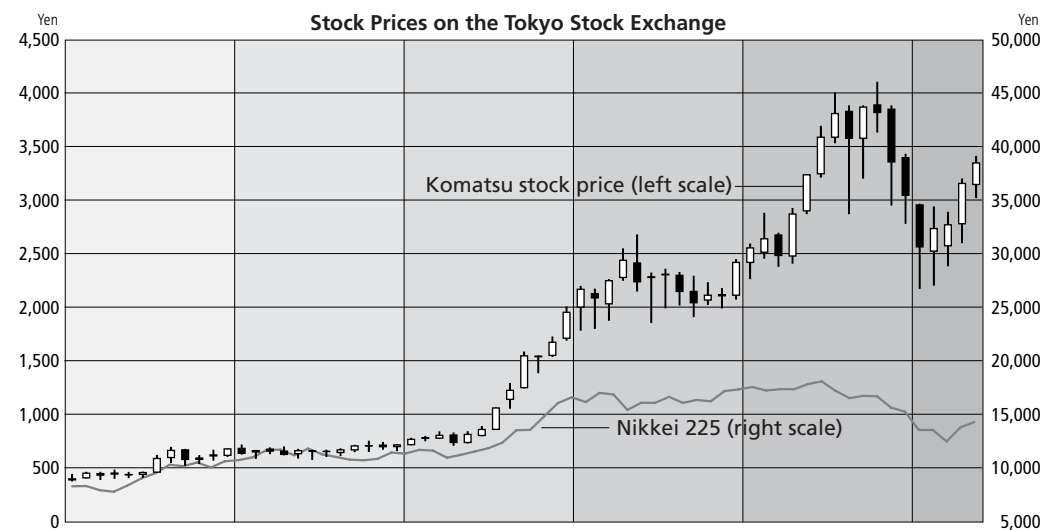
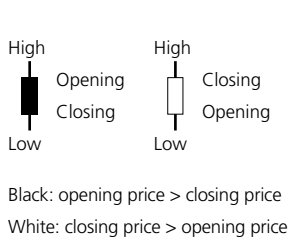
As of March 31, 2008



Note: Percentage figures are shown after dropping the last two places of decimals.

## Tokyo Stock Price Range

As of May 31, 2008



Note : Calendar years (January–December)