

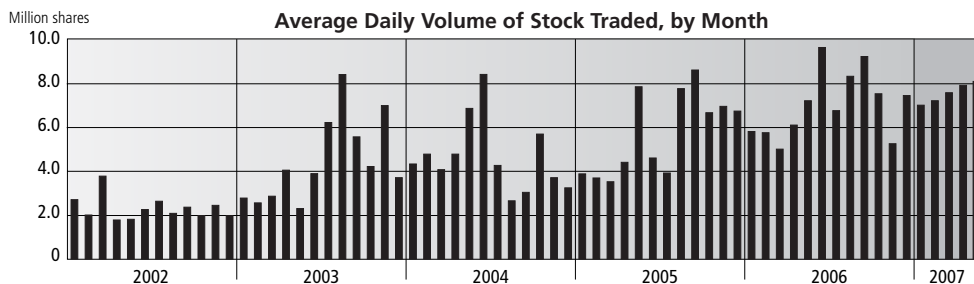
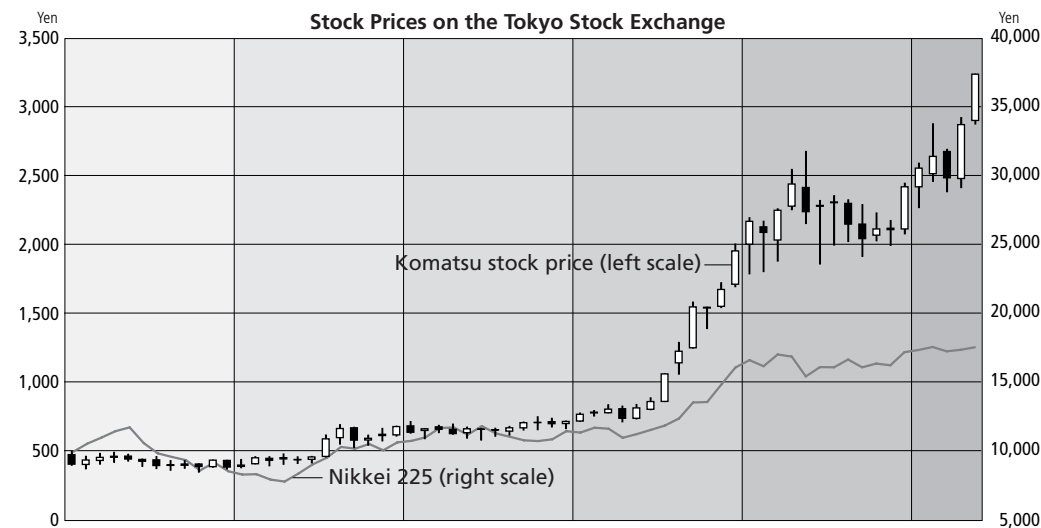
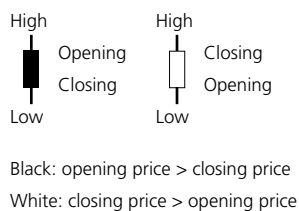
Corporate Information

(As of March 31, 2007)

| | |
|--|--|
| Head Office | 2-3-6 Akasaka, Minato-ku, Tokyo 107-8414, Japan Corporate Communications Department Tel: 81-3-5561-2687 Fax: 81-3-3505-9662 E-mail: ir@komatsu.co.jp Corporate Controlling Department Tel: 81-3-5561-2604 Fax: 81-3-3586-0374 |
| Date of Establishment | May 13, 1921 |
| Common Stock Outstanding | ¥67,870 million (US\$575 million) |
| Shares of Common Stock Issued and Outstanding | 998,744,060 shares |
| Number of Shareholders | 129,640 |
| Stock Listings | Tokyo, Osaka |
| Transfer Agent for Common Stock | Mitsubishi UFJ Trust and Banking Corporation 4-5, Marunouchi 1-chome, Chiyoda-ku, Tokyo 100-8212, Japan |
| Depositories | ADRs: Depository Receipts Services, Citibank, N.A., 388 Greenwich Street, 14th Floor, New York, NY 10013, U.S.A. |
| Stock Price Range in Fiscal 2006 | High: ¥2,870 (February 26, 2007); Low: ¥1,857 (June 14, 2006) |
| Number of Employees (Consolidated) | 33,863 |

Tokyo Stock Price Range

As of May 31, 2007



Note : Calendar years (January–December)